

 **BOEING**  
COMPONENT  
MAINTENANCE MANUAL

TO: ALL HOLDERS OF FORWARD TRUNNION BEARING SUPPORT ASSEMBLY COMPONENT  
MAINTENANCE MANUAL 57-54-33

REVISION NO. 6 DATED NOV 01/00

HIGHLIGHTS

All data that was in 767 CMM 57-54-31 is included in this manual 57-54-33.

Pages which have been added or revised are outlined below together with the highlights of the revision. Remove and insert the affected pages as listed and enter the revision number and date on the Record of Revision Sheet.

CHAPTER/SECTION

AND PAGE NO.

DESCRIPTION OF CHANGE

REPAIR 5-1  
601-602

Changed bushing installation details to agree with the engineering drawing.

REPAIR 5-1  
601-602

Added clarifications and updated callouts.

**57-54-33**

HIGHLIGHTS

01.1

Page 1

Nov 01/00

# FORWARD TRUNNION BEARING SUPPORT ASSEMBLY

PART NUMBERS 112T1717-1,-2,-7,-8,  
-11 THRU -18,  
-29 THRU -40

COMPONENT MAINTENANCE MANUAL  
WITH  
ILLUSTRATED PARTS LIST

**57-54-33**

TITLE PAGE

Page 1

Sep 01/95

01.1



REVISION RECORD

- Retain this record in front of manual. On receipt of revision, insert revised pages in the manual, and enter revision number, date inserted and initial.

REVISION NUMBER	REVISION DATE	DATE FILED	BY	REVISION NUMBER	REVISION DATE	DATE FILED	BY



TEMPORARY REVISION AND SERVICE BULLETIN RECORD

BOEING SERVICE BULLETIN	BOEING TEMPORARY REVISION	OTHER DIRECTIVE	DATE OF INCORPORATION INTO MANUAL
SB 57-0047 SB 57A0038		PRR B10415 PRR B10450 PRR C12050 PRR B12595	OCT 10/84 OCT 10/84 JAN 10/87 SEP 01/95 SEP 01/95

**57-54-33**

TR & SB RECORD

01.1

Page 1

Sep 01/95


**BOEING**  
 COMPONENT  
 MAINTENANCE MANUAL

PAGE	DATE	CODE	PAGE	DATE	CODE
57-54-33			REPAIR-GENERAL		CONT.
			604	BLANK	
TITLE PAGE			REPAIR 1-1		
1	SEP 01/95	01.1	601	SEP 01/95	01.1
2	BLANK		602	BLANK	
REVISION RECORD			REPAIR 2-1		
1	OCT 01/87	01	601	SEP 01/95	01.1
2	BLANK		602	BLANK	
TR & SB RECORD			REPAIR 3-1		
1	SEP 01/95	01.1	601	SEP 01/95	01.1
2	BLANK		602	BLANK	
LIST OF EFFECTIVE PAGES			REPAIR 4-1		
*1	NOV 01/00	01	601	SEP 01/95	01.1
THRU LAST PAGE			602	BLANK	
CONTENTS			REPAIR 5-1		
1	OCT 01/87	01	*601	NOV 01/00	01.1
2	BLANK		*602	NOV 01/00	01.1
INTRODUCTION			603	SEP 01/97	01.1
1	OCT 01/87	01	604	BLANK	
2	BLANK		REPAIR 6-1		
DESCRIPTION & OPERATION			601	SEP 01/95	01.1
1	OCT 01/87	01	602	BLANK	
2	BLANK		REPAIR 7-1		
DISASSEMBLY			601	SEP 01/95	01.1
301	SEP 01/95	01.1	602	SEP 01/95	01.1
302	BLANK		REPAIR 8-1		
CHECK			601	SEP 01/95	01.1
501	SEP 01/95	01.1	602	SEP 01/95	01.1
502	BLANK		603	SEP 01/95	01.1
REPAIR-GENERAL			604	SEP 01/95	01.1
601	NOV 01/99	01.101	REPAIR 9-1		
602	NOV 01/99	01.1	601	SEP 01/95	01.1
603	NOV 01/99	01.1	602	BLANK	

\* = REVISED, ADDED OR DELETED

**57-54-33**
 EFFECTIVE PAGES  
 CONTINUED Page 1  
 01 Nov 01/00

PAGE	DATE	CODE	PAGE	DATE	CODE
ASSEMBLY			ILLUSTRATED PARTS LIST		CONT.
701	SEP 01/95	01.1	1029	SEP 01/95	01.1
702	SEP 01/95	01.1	1030	SEP 01/95	01.1
703	SEP 01/95	01.1	1031	SEP 01/95	01.1
704	SEP 01/95	01.1	1032	SEP 01/95	01.1
			1033	SEP 01/95	01.1
FITS AND CLEARANCES			1034	SEP 01/95	01.1
801	SEP 01/95	01.1	1035	SEP 01/95	01.1
802	BLANK		1036	SEP 01/95	01.1
			1037	SEP 01/95	01.1
SPECIAL TOOLS			1038	SEP 01/95	01.1
901	OCT 01/87	01	1039	SEP 01/95	01.1
902	BLANK		1040	SEP 01/95	01.1
			1041	SEP 01/95	01.1
ILLUSTRATED PARTS LIST			1042	SEP 01/95	01.1
1001	OCT 01/87	01	1043	SEP 01/95	01.1
1002	SEP 01/95	01.1	1044	SEP 01/95	01.1
1003	SEP 01/95	01.1	1045	SEP 01/95	01.1
1004	SEP 01/95	01.1	1046	SEP 01/95	01.1
1005	SEP 01/95	01.1	1047	SEP 01/95	01.1
1006	SEP 01/95	01.1	1048	SEP 01/95	01.1
1007	SEP 01/95	01.1	1049	SEP 01/95	01.1
1008	SEP 01/95	01.1	1050	SEP 01/95	01.1
1009	SEP 01/95	01.1	1051	SEP 01/95	01.1
1010	SEP 01/95	01.1	1052	SEP 01/95	01.1
1011	SEP 01/95	01.1	1053	SEP 01/95	01.1
1012	SEP 01/95	01.1	1054	SEP 01/95	01.1
1013	SEP 01/95	01.1	1055	SEP 01/95	01.1
1014	SEP 01/95	01.1	1056	SEP 01/95	01.1
1015	SEP 01/95	01.1	1057	SEP 01/95	01.1
1016	SEP 01/95	01.1	1058	SEP 01/95	01.1
1017	SEP 01/95	01.1	1059	SEP 01/95	01.1
1018	SEP 01/95	01.1	1060	SEP 01/95	01.1
1019	SEP 01/95	01.1	1061	SEP 01/95	01.1
1020	SEP 01/95	01.1	1062	SEP 01/95	01.1
1021	SEP 01/95	01.1	1063	SEP 01/95	01.1
1022	SEP 01/95	01.1	1064	SEP 01/95	01.1
1023	SEP 01/95	01.1	1065	SEP 01/95	01.1
1024	SEP 01/95	01.1	1066	BLANK	
1025	SEP 01/95	01.1	1067	SEP 01/95	01.1
1026	SEP 01/95	01.1	1068	SEP 01/95	01.1
1027	SEP 01/95	01.1	1069	SEP 01/95	01.1
1028	SEP 01/95	01.1	1070	SEP 01/95	01.1

\* = REVISED, ADDED OR DELETED

**57-54-33**

 EFFECTIVE PAGES  
 CONTINUED Page 2  
 01 Nov 01/00


**BOEING**  
 COMPONENT  
 MAINTENANCE MANUAL

PAGE	DATE	CODE	PAGE	DATE	CODE
ILLUSTRATED PARTS LIST		CONT.			
1071	SEP 01/95	01.1			
1072	SEP 01/95	01.1			
1073	SEP 01/95	01.1			
1074	SEP 01/95	01.1			
1075	SEP 01/95	01.1			
1076	SEP 01/95	01.1			
1077	SEP 01/95	01.1			
1078	SEP 01/95	01.1			
1079	SEP 01/95	01.1			
1080	SEP 01/95	01.1			
1080A	SEP 01/95	01.1			
1080B	SEP 01/95	01.1			
1080C	SEP 01/95	01.1			
1080D	SEP 01/95	01.1			
1080E	SEP 01/95	01.1			
1080F	SEP 01/95	01.1			
1080G	SEP 01/95	01.1			
1080H	SEP 01/95	01.1			
1080I	SEP 01/95	01.1			
1080J	SEP 01/95	01.1			
1080K	SEP 01/95	01.1			
1080L	SEP 01/95	01.1			
1080M	SEP 01/95	01.1			
1080N	SEP 01/95	01.1			
1080O	SEP 01/95	01.1			
1080P	SEP 01/95	01.1			

\* = REVISED, ADDED OR DELETED

# 57-54-33

EFFECTIVE PAGES  
 LAST PAGE Page 3  
 01 Nov 01/00



TABLE OF CONTENTS

<u>Paragraph Title</u>	<u>Page</u>
Description and Operation. . . . .	1
Testing/Trouble Shooting (not applicable)	
Disassembly. . . . .	301
Cleaning . . . . . * [1]	
Check. . . . .	501
Repair . . . . .	601
Assembly . . . . .	701
Fits and Clearances. . . . .	801
Special Tools. . . . .	901
Illustrated Parts List . . . . .	1001

\*[1] Special instructions not required. Use standard industry practices.

**57-54-33**

CONTENTS

Page 1

Oct 01/87

01





### INTRODUCTION

The instructions in this manual provide the information necessary to perform maintenance functions ranging from simple checks and replacement to complete shop-type repair.

This manual is divided into separate sections:

- |  |                              |
|--|------------------------------|
| 1. Title Page                                      | 4. List of Effective Pages   |
| 2. Record of Revisions                             | 5. Table of Contents         |
| 3. Temporary Revision &<br>Service Bulletin Record | 6. Introduction              |
|  | 7. Procedures & IPL Sections |

Refer to the Table of Contents for the page location of applicable sections. An asterisked flagnote \*[ ] in place of the page number indicates that no special instructions are provided since the function can be performed using standard industry practices.

The beginning of the REPAIR section includes a list of the separate repairs, a list of applicable standard Boeing practices, and an explanation of the True Position Dimensioning symbols used.

An explanation of the use of the Illustrated Parts List is provided in the Introduction to that section.

All weights and measurements used in the manual are in English units, unless otherwise stated. When metric equivalents are given they will be in parentheses following the English units.

Design changes, optional parts, configuration differences and Service Bulletin modifications create alternate part numbers. These are identified in the Illustrated Parts List (IPL) by adding an alphabetical character to the basic item number. The resulting item number is called an alpha-variant. Throughout the manual, IPL basic item number references also apply to alpha-variants unless otherwise indicated.

Verification:

Assembly: Mar 13/86

**57-54-33**

INTRODUCTION

01

Page 1

Oct 01/87



FORWARD TRUNNION BEARING SUPPORT ASSEMBLY  
DESCRIPTION AND OPERATION

1. Description and Operation

A. The forward trunnion bearing support assembly is composed of a side brace assembly, inboard and outboard support assemblies, a housing assembly, and two strap assemblies fastening the above together. The forward trunnion bearing support assembly attaches to the wing rear spar and provides support for the main landing gear.

2. Leading Particulars (approximates)

- A. Length -- 35 inches
- B. Width -- 33 inches
- C. Height -- 15 inches
- D. Weight -- 139 pounds

57-54-33

DESCRIPTION & OPERATION

01

Page 1

Oct 01/87

**BOEING**  
COMPONENT  
MAINTENANCE MANUALDISASSEMBLY

1. Use standard industry practices for disassembly of this component.

**NOTE:** Disassemble this component only as necessary to complete fault isolation determine the serviceability of parts, perform required repairs, and restore the unit to serviceable condition.

**CAUTION:** FORWARD TRUNNION BEARING SUPPORT ASSEMBLY (1, 3, 5, IPL Fig. 1; 1, 5, IPL FIG. 2) IS A MATCHED ASSEMBLY AND MUST BE KEPT TOGETHER TO ENSURE PROPER OPERATION AFTER ASSEMBLY.

2. Tag items of support assembly (1, 3, 5 IPL Fig. 1; 1, 5, IPL Fig. 2) as disassembled stating that item is part of a matched assembly.
3. Deleted.
4. Do not separate bearing plate (505, 510, IPL Fig. 1; 765, 770, IPL Fig. 2) and support assemblies (275, 280, 435, 440, IPL Fig. 1; 490, 495, 680, 685, IPL Fig. 2) or brace assemblies (345, 347, 350, 352, IPL Fig. 1; 585, 590, IPL Fig. 2), strap assemblies (195, 197, 198, 200, IPL Fig. 1; 395, 400, IPL Fig. 2), outboard support assemblies (435, 440, IPL Fig. 1; 680, 685, IPL Fig. 2) unless replacement is necessary or repair cannot be accomplished in place. All faying surfaces have BMS 5-95 sealant applied.
5. Fittings (415, 417, 420, 422, 425, 427, 430, 432, 432A, IPL Fig. 1; 655, 660, 665, IPL Fig. 2) have been bonded together using BMS 5-95 sealant or BMS 5-101, type 2 adhesive. Do not separate; bonded assemblies (390, 395, IPL Fig. 1; 620, 630, IPL Fig. 2) have been machined as matched parts.
6. Fittings (485, 490, 495, 500, IPL Fig. 1; 745, 750, IPL Fig. 2) have been bonded together using BMS 5-101, type 2 adhesive. Do not separate; bonded assemblies (455, 460, IPL Fig. 1; 700, 710, IPL Fig. 2) have been machined as matched parts.
7. Fittings (290, 295, 335A, 340, IPL Fig. 1; 565, 570, IPL Fig. 2) have been bonded together using BMS 5-101, type 2 adhesive. Do not separate; bonded assemblies (325A, 330A, IPL Fig. 1; 530, 540, IPL Fig. 2) have been machined.

**57-54-33**

DISASSEMBLY

01.1

Page 301

Sep 01/95

**BOEING**  
COMPONENT  
MAINTENANCE MANUALCHECK

1. Check all parts for obvious defects in accordance with standard industry practices.

CAUTION: DO NOT PENETRANT INSPECT ACROSS BOND LINES; PROCEDURE WILL WEAKEN BOND.

2. Penetrant check per 20-20-02 -- Fittings (147, 192, 290, 295, 335A, 340, 415, 417, 420, 422, 425, 427, 430, 432, 485, 490, 495, 500, IPL Fig. 1; 310, 390, 565, 570, 575, 580, 655, 660, 665, 670, 675, 745, 750, 755, 760, IPL Fig. 2), bonded assemblies (195, 197, 198, 200, 275, 280, 435, 440, IPL Fig. 1; 395, 400, IPL Fig. 2), side brace assemblies (345, 347, 350, 352, IPL Fig. 1; 585, 590, IPL Fig. 2), fitting (535, IPL Fig. 1; 790, IPL Fig. 2).
3. Magnetic particle check per 20-20-01 -- pins (260, 270, 272, IPL Fig. 1; 15, 25, IPL Fig. 2).

**57-54-33**

CHECK

01.1

Page 501

Sep 01/95

REPAIR – GENERAL1. Contents

- A. Repair, refinish, and replacement procedures are included in separate repair sections as follows:

<u>P/N</u>	<u>NAME</u>	<u>REPAIR</u>
112T1011	BRACE ASSY	1-1
112T1045	STRAP ASSY	2-1
112T1710	OUTBOARD SUPPORT ASSY	3-1
112T1711	INBOARD SUPPORT ASSY	4-1
112T1018	HOUSING ASSY	5-1
113T1893	FITTING ASSY	6-1
112T1035	FUSE PIN	7-1
112T1078	FUSE PIN	7-1
112T1717	SUPPORT ASSY	8-1
- - -	MISCELLANEOUS PARTS FINISH	9-1

2. Standard Practices

- A. Refer to the following standard practices, as applicable, for details of procedures in individual repairs.

57-54-33

REPAIR-GENERAL

01.101

Page 601

Nov 01/99

20-00-00	Introduction
20-10-01	Repair and Refinish of High Strength Steel Parts
20-10-03	Shot Peening
20-10-04	Grinding of Chrome Plated Parts
20-41-01	Decoding Table for Boeing Finish Codes
20-41-02	Application of Chemical and Solvent-Resistant Finishes
20-41-03	Application of Corrosion Preventives to Closed End Tubes
20-42-03	Hard Chrome Plating
20-42-05	Bright Cadmium Plating
20-43-01	Chromic Acid Anodizing
20-43-03	Chemical Conversion Coatings for Aluminum
20-50-03	Bearing and Bushing Replacement
20-50-12	Application of Adhesives
20-50-19	General Sealing
20-60-02	Finishing Materials
20-60-04	Miscellaneous Materials
20-70-01	Protection, Storage, and Handling of Airplane Components

**57-54-33**

REPAIR-GENERAL

01.1

Page 602

Nov 01/99

### 3. Materials and Equipment

NOTE: Equivalent substitutes can be used.

- A. Adhesive -- BMS 5-101, type 2 (Ref 20-60-04)
- B. Compound, corrosion preventive -- MIL-C-11796 (Ref 20-60-02)
- C. Enamel -- BMS 10-60, BAC707 gray gloss (Ref 20-60-02)
- D. Primer -- BMS 10-11, type 1 (Ref 20-60-02)
- E. Sealant -- BMS 5-95 (Ref 20-60-04)
- F. MLG Trunnion Support Reaming Jig Equipment -- A57001-1

### 4. Dimensioning Symbols

- A. Standard True Position Dimensioning Symbols used in applicable repair procedures are shown in SOPM 20-00-00.

**57-54-33**

REPAIR-GENERAL

01.1

Page 603

Nov 01/99

BRACE ASSEMBLY – REPAIR 1-1

112T1011-1, -2, 7, -8, -13, -14

NOTE: Refer to REPAIR-GEN for list of applicable standard practices.

1. Bushing Replacement (370, 375, IPL Fig. 1; 610, 615, IPL Fig. 2)

A. Remove bushings.

B. Shrink-fit install bushing (375, IPL Fig. 1; 615, IPL Fig. 2) per 20-50-03 using wet BMS 5-95 sealant.

C. Machine bore of bushing (375, IPL Fig. 1; 615, IPL Fig. 2) to 0.9372-0.9379 inch diameter.

D. Shrink-fit install bushing (370, IPL Fig. 1; 610, IPL Fig. 2) per 20-50-03 using wet BMS 5-95 sealant.

E. Machine bore of bushing (370, IPL Fig. 1; 610, IPL Fig. 2) to 0.7495-0.7515 inch diameter.

F. Fillet seal around flanges of bushings using BMS 5-95 sealant.

2. Refinish

NOTE: Fittings (415, 417, 420, 422, 425, 427, 430, 432, IPL Fig. 1; 655, 660, 665, 670, 675, IPL Fig. 2) have been bonded together using BMS 5-95 sealant or BMS 5-101, type 2 adhesive. Do not separate; bonded assemblies (390, 395, IPL Fig. 1; 620, 630, IPL Fig. 2) have been machined as matched parts.

A. Machined assemblies (380, 383, 385, 387, IPL Fig. 1; 620, 630, IPL Fig. 2) -- On machined surfaces that fay with outboard support assembly (435, 440, IPL Fig. 1; 680, 685, IPL Fig. 2) and in bushing hole: brush, swab or spray colored chemical coating (F-17.10). Material: Aluminum alloy.

B. Brace assemblies (345, 347, 350, 352, IPL Fig. 1; 585, 590, IPL Fig. 2) -- Apply one coat BMS 10-11, type 1 primer (F-20.02) all over except omit from bushings. Apply BMS 10-60, BAC707 gray gloss enamel (SRF-14.9813) all over, except omit enamel from bushings and from faying surfaces common to outboard support assembly (435, 440, IPL Fig. 1; 680, 685, IPL Fig. 2), and to strap assemblies (195, 198, IPL Fig. 1; 395, 400, IPL Fig. 2).

**57-54-33**

REPAIR 1-1

01.1

Page 601

Sep 01/95





STRAP ASSEMBLY – REPAIR 2-1

112T1045-5, -6, -7, -8

NOTE: Refer to REPAIR-GEN for list of applicable standard practices.

- | 1. Bushing Replacement (225, 228, 231, IPL Fig. 1; 395, 400, IPL Fig. 2)
  - A. Remove bushings.
  - | B. If strap (237, 238, IPL Fig. 1; 465, IPL Fig. 2) requires replacement, fay surface seal strap to existing strap using BMS 5-95 sealant. Strap surface to be flat within 0.010 inch.
  - | C. Install bushings (225, 228, 231, IPL Fig. 1, 450, 455, 457, IPL Fig. 2) per 20-50-03 using BMS 10-11, type 1 primer. Install bushings (228, 231) flush.
2. Refinish
  - | A. Strap (237, 238, IPL Fig. 1; 465 IPL Fig. 2) -- Apply one coat BMS 10-11, type 1 primer (F-20.02) all over. Material: Titanium alloy.
  - | B. Strap assembly (195, 197, 198, 200, IPL Fig. 1; 395, 400, IPL Fig. 2) -- Apply BMS 10-60, BAC707 gray gloss enamel (SRF-14.9813) all over, except omit enamel from bushings.

57-54-33

REPAIR 2-1

01.1

Page 601

Sep 01/95

OUTBOARD SUPPORT BONDED ASSEMBLY – REPAIR 3-1

112T1710-7, -8, -19, -20

NOTE: Refer to REPAIR-GEN for list of applicable standard practices.

1. Bushing Replacement (465, IPL Fig. 1; 720, IPL Fig. 2)

A. Remove bushings.

B. Shrink-fit install bushings (465, IPL Fig. 1; 720, IPL Fig. 2) per 20-50-03 using wet BMS 5-95 sealant.

2. Refinish

NOTE: Fittings (485, 490, 495, 500, IPL Fig. 1; 745, 750, IPL Fig. 2) have been bonded together using BMS 5-101, type 2 adhesive. Do not separate; bonded assemblies (455, 460, IPL Fig. 1; 700, 710, IPL Fig. 2) have been machined as matched parts.

A. Bonded assembly (455, 460, IPL Fig. 1; 700, 710, IPL Fig. 2) -- Brush, swab, or spray colored chemical coating (F-17.10) in bushing holes. Material: Aluminum alloy.

B. Outboard support assembly (435, 440, IPL Fig. 1; 680, 685, IPL Fig. 2) -- Brush, swab, or spray colored chemical coating (F-17.10) on machined surfaces. Apply one coat BMS 10-11, type 1 primer (F-20.02) all over, except omit from bushings. Apply BMS 10-60, BAC707 gray gloss enamel (SRF-14.9813) all over, except omit from bushings. Optional: apply BMS 10-60, BAC 707 gray gloss enamel (SRF-14-9813) on faying surfaces common to strap assemblies (195, 197, 198, 200, IPL Fig. 1; 395, 400, IPL Fig. 2) and to brace assembly (345, 347, 350, 352, IPL Fig. 1; 585, 590, IPL Fig. 2).

**57-54-33**

REPAIR 3-1

01.1

Page 601

Sep 01/95

INBOARD SUPPORT BONDED ASSEMBLY – REPAIR 4-1

112T1711-7, -8, -13, -14, -19, -20

NOTE: Refer to REPAIR-GEN for list of applicable standard practices.

1. Bushing Replacement (285, IPL Fig. 1; 500, IPL Fig. 2)

A. Remove bushings.

B. Shrink-fit install bushings (285, IPL Fig. 1; 500, IPL Fig. 2) per 20-50-03 using wet BMS 5-95 sealant.

2. Refinish

NOTE: Fittings (290, 295, 335A, 340, IPL Fig. 1; 565, 570, 575, 580, IPL Fig. 2) have been bonded together using BMS 5-101, type 2 adhesive. Do not separate; bonded assemblies (325A, 330A) have been machined.

A. Bonded assembly (325A, 330A, IPL Fig. 1; 530, 540, IPL Fig. 2) -- Brush, swab, or spray colored chemical coating (F-17.10) in bushing holes.  
Material: Aluminum alloy.

B. Inboard support bonded assembly (275, 280, IPL Fig. 1; 490, 495, IPL Fig. 2) -- Brush, swab, or spray colored chemical coating (F-17.10) on machined surfaces. Apply one coat BMS 10-11, type 1 primer (F-20.02) all over, except omit from bushings. Apply BMS 10-60, BAC707 gray gloss enamel (SRF-14.9813) all over, except omit from bushings and from faying surfaces common to strap assemblies (195, 197, 198, 200, IPL Fig. 1; 395, 400, IPL Fig. 2).

**57-54-33**

REPAIR 4-1

01.1

Page 601

Sep 01/95

HOUSING ASSEMBLY – REPAIR 5-1

112T1018-1

**NOTE:** Refer to REPAIR-GENERAL for a list of applicable standard practices. For repair of surfaces which is only replacement of the original finish, refer to Refinish instructions in Fig. 602.

1. Bushing Replacement (530, IPL Fig. 1; 785, IPL Fig. 2) (Fig. 601)

A. Remove the old bushings.

B. If you find defects on the housing, refer to par. 2 for repair instructions.

C. Apply BMS 10-11, type 1 primer to the spotface surfaces as shown. Cure the primer.

D. Install replacement bushings by the shrink-fit method of SOPM 20-50-03, with BMS 5-95 sealant as the installation finish. Make sure the bushing flanges are flush with or below the surface no more than 0.025 inch. If necessary, machine the bushing flanges flush with or 0.005 inch maximum below the surface.

E. Fill the gap around the bushings as shown, or per SOPM 20-50-19.

2. Housing Repair (Fig. 602)

A. Repair is only replacement of the original finish. See Fig. 602 for details.

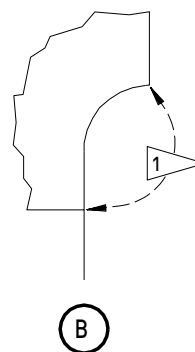
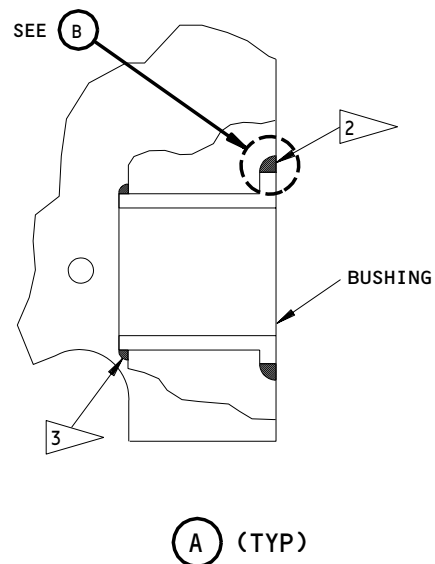
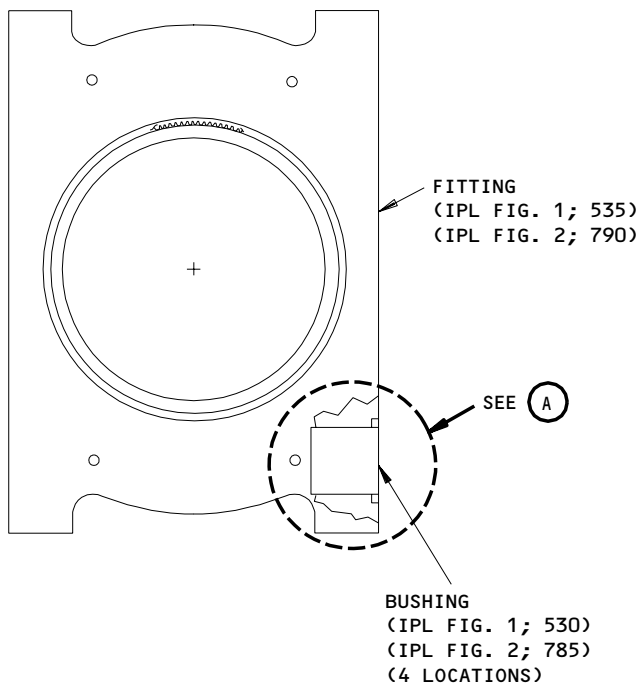
**57-54-33**

REPAIR 5-1

01.1

Page 601

Nov 01/00



- 1 BEFORE BUSHING INSTALLATION, APPLY BMS 10-11, TYPE 1 PRIMER TO THESE SURFACES
- 2 AFTER BUSHING INSTALLATION, FILL THIS GAP FLUSH WITH BMS 5-95 SEALANT ALL AROUND THE FLANGE
- 3 APPLY A CORROSION FILLET SEAL AROUND THESE EDGES OF THE BUSHINGS WITH BMS 5-95 CLASS B SEALANT (SOPM 20-50-19)

112T1018-1  
 Bushing Replacement  
 Figure 601

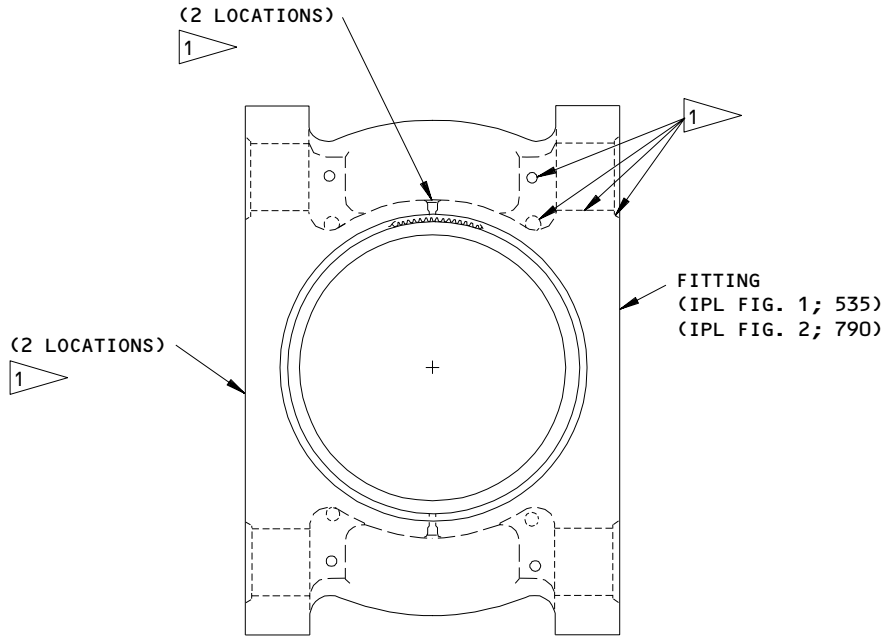
**57-54-33**

REPAIR 5-1

01.1

Page 602

Nov 01/00



**REFINISH**

PHOSPHATE-FLUORIDE TREAT (F-14.881). APPLY PRIMER BMS 10-11, TYPE 1 (F-20.02) AND ENAMEL BMS 10-60 (SRF-14.9813) UNLESS SHOWN BY 1

1 NO PRIMER OR ENAMEL

**REPAIR**

(SAME AS REFINISH)

125/ ALL MACHINED SURFACES UNLESS SHOWN DIFFERENTLY

MATERIAL: TITANIUM ALLOY

ALL DIMENSIONS ARE IN INCHES

112T1017-1,-3  
 Fitting Refinish  
 Figure 602

**57-54-33**

REPAIR 5-1

Page 603

Sep 01/97

01.1

FITTING ASSEMBLY – REPAIR 6-1

113T1893-1, -2

NOTE: Refer to REPAIR-GEN for list of applicable standard practices.

- | 1. Bushing Replacement (141, 144, 186, 189, IPL Fig. 1; 380, 385, IPL Fig. 2)
  - A. Remove bushings.
  - B. Shrink-fit install bushings per 20-50-03 using wet BMS 5-95 sealant.
  - | C. Machine bores of bushings (141, 186, IPL Fig. 1; 380, IPL Fig. 2) to 0.2500-0.2505 inch diameter hole with 63 AA machine finish.
  - | D. Machine bores of bushings (144, 189, IPL Fig. 1; 385, IPL Fig. 2) to 0.3750-0.3756 inch diameter hole with 63 AA machine finish.
  - E. Fillet seal around flanges of bushings using BMS 5-95 sealant.
2. Refinish
  - | A. Fittings (147, 192, IPL Fig. 1; 370, IPL Fig. 2) -- Chromic acid anodize. Apply one coat BMS 10-11, type 1 primer (F-18.13) all over, except omit primer from bushing holes. Material: Aluminum alloy.

**57-54-33**

REPAIR 6-1

01.1

Page 601

Sep 01/95

**BOEING**  
COMPONENT  
MAINTENANCE MANUALFUSE PIN - REPAIR 7-1

112T1035-1, -2, -3  
112T1078-1, -2, -3, -4

**CAUTION:** TO PRESERVE INTEGRITY OF FUSE, DAMAGE OR ALTERATION TO BASE METAL IS NOT ALLOWED.

**NOTE:** Refer to REPAIR-GEN for list of applicable standard practices.

1. Refinish

- A. Fuse pin (112T1035-1, -2; 112T1078-1, -2, IPL Fig. 1) (112T1035-2; 112T1078-1, -2; IPL Fig. 2) -- Chrome plate (F-15.03) per Fig. 601. Grind to dimension shown. Cadmium plate (0.0002-0.0004 inch) per 20-42-05, type 2, class 3, all surfaces not chrome plated. Apply two coats BMS 10-11, type 1 primer (F-20.03) all surfaces except chrome plate. Apply wipe-on BMS 10-11, type 1 primer (F-19.45) to chrome plate. Apply MIL-C-11796 rust preventive compound on all internal surfaces (F-19.03). Material: 4330M STL, RC 33.
- B. Fuse pin (112T1035-3; 112T1078-3, -4, IPL Fig. 1 and 2) -- Chrome plate (F-15.34). Grind to dimension shown. Apply two coats of BMS 10-11, type 1 primer (F-20.03) all surfaces except chrome plate. Apply wipe-on BMS 10-11, type 1 primer (F-19.45) to chrome plate. Apply MIL-C-11796 on all internal surfaces (F-19.03). Material: 15-5PH CRES.

**57-54-33**

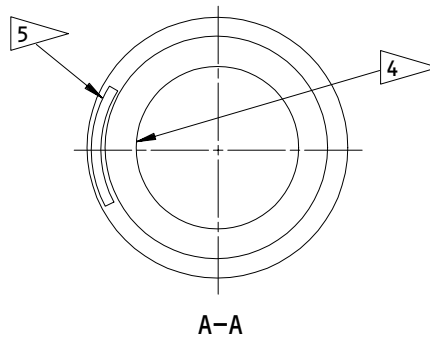
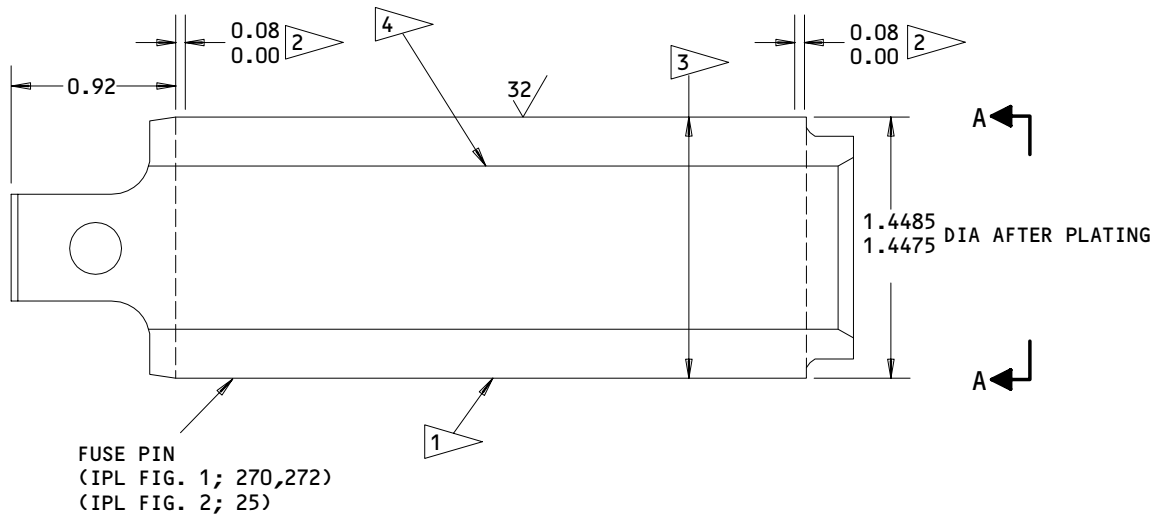
REPAIR 7-1

01.1

Page 601

Sep 01/95





1 FOR 112T1035-2,-3,112T1078-1,-2,-3,-4:  
 BEFORE PLATING, SHOT PEEN THE OUTSIDE  
 DIAMETER ONLY,  
 INTENSITY 0.016A.

2 CHROME PLATE RUNOUT AREA.

3 CHROME PLATE THIS DIAMETER.

4 MIL-C-11796 RUST PREVENTIVE COMPOUND  
 ON ALL INTERNAL SURFACES (F-19.03)

5 VIBRO ENGRAVE SERIAL NUMBER ON  
 THIS SURFACE PER SOPM 20-50-10.

ALL DIMENSIONS ARE IN INCHES

112T1035-1,-2,-3  
 112T1078-1,-2,-3,-4  
 Fuse Pin Refinish  
 Figure 601

**57-54-33**

REPAIR 7-1

Page 602

Sep 01/95

01.1

SUPPORT ASSEMBLY - REPAIR 8-1

112T1717-1, -2, -7, -8, -11 thru -24, -29 thru -40

NOTE: Refer to REPAIR-GEN for list of applicable standard practices.

1. Bushing Replacement (240, 243, 245, 250, IPL Fig. 1; 470, 475, 480, IPL Fig. 2)

- A. Remove bushings.
- B. If support assemblies (275, 280, 435, 440, IPL Fig. 1; 30, 35, IPL Fig. 2) or brace assembly (345, 347, 350, 352, IPL Fig. 1; 585, 590, IPL Fig. 2) require replacement, locate new holes for bushings from bonded strap assemblies (195, 197, 198, 200) per Fig. 601.
- C. Shrink-fit install bushings per 20-50-03, using wet BMS 5-95 sealant. Install bushings flush.
- D. Machine bores of bushings per Fig. 601.

2. Bushing Machining (285, 465, 530, IPL Fig. 1; 500, 720, IPL Fig. 2) (Fig. 602)

CAUTION: HOUSING ASSEMBLY (520, IPL Fig. 1; 500, 720, IPL Fig. 2) AND SUPPORT BONDED ASSEMBLIES (275, 280, 435, 440, IPL Fig. 1, 490, 495, 540, 545, IPL Fig. 2) MUST BE HELD IN CORRECT ALIGNMENT WHEN MACHINING BUSHINGS.

- A. Refer to Step F. for reaming of bushings using tool.
- B. Install pin (1.414-1.417 inch diameter) through one set of bushings.
- C. Machine bores of bushings to dimension shown (Fig. 602).
- D. Install pin (1.445-1.449 inch diameter) through machined set of bushings.
- E. Machine bores of bushings to dimensions shown (Fig. 602).
- F. Alternately, ream bushings using tool A57001-1, Jig Equipment - MLG Trunnion Support Reaming.
- G. Fillet seal around bushings using BMS 5-95 sealant per Fig. 602.

3. Support Assembly Component Replacement

- A. Remove damaged support assembly (275, 280, 435, 440, IPL Fig. 1; 30, 35, IPL Fig. 2) or brace assembly (345, 347, 350, 352, IPL Fig. 1; 585, 590, IPL Fig. 2).

**57-54-33**

REPAIR 8-1

01.1

Page 601

Sep 01/95

- B. Reassemble support assembly (1, 1B thru 1E, 3, 5B thru 5E) with new component (Fig. 603) to dimension shown.
- C. Machine indicated surfaces to dimension shown. Shot peen machined surfaces per 20-10-03 using 230-550 shot, 0.014A intensity, coverage 2.0.
- D. Refinish machined surfaces per Refinish.

4. Refinish

- A. Support assembly (1, 1B thru 1E, 3, 5B thru 5E) -- Brush, swab, or spray colored chemical coating (F-17.10) to bushing holes before installing bushings (240, 243, 245, 250, IPL Fig. 1; 470, 475, 480, IPL Fig. 2). If support assembly (275, 280, 435, 440, IPL Fig. 1; 490, 495, 680, 685, IPL Fig. 2) or brace assembly (345, 347, 350, 352, IPL Fig. 1; 585, 590, IPL Fig. 2) has required replacement, brush, swab, or spray colored chemical coating (F-17.10) to surface indicated in Fig. 603, then apply two coats BMS 10-11, type 1 primer (F-20.03) to same surface, overspray permitted.

**57-54-33**

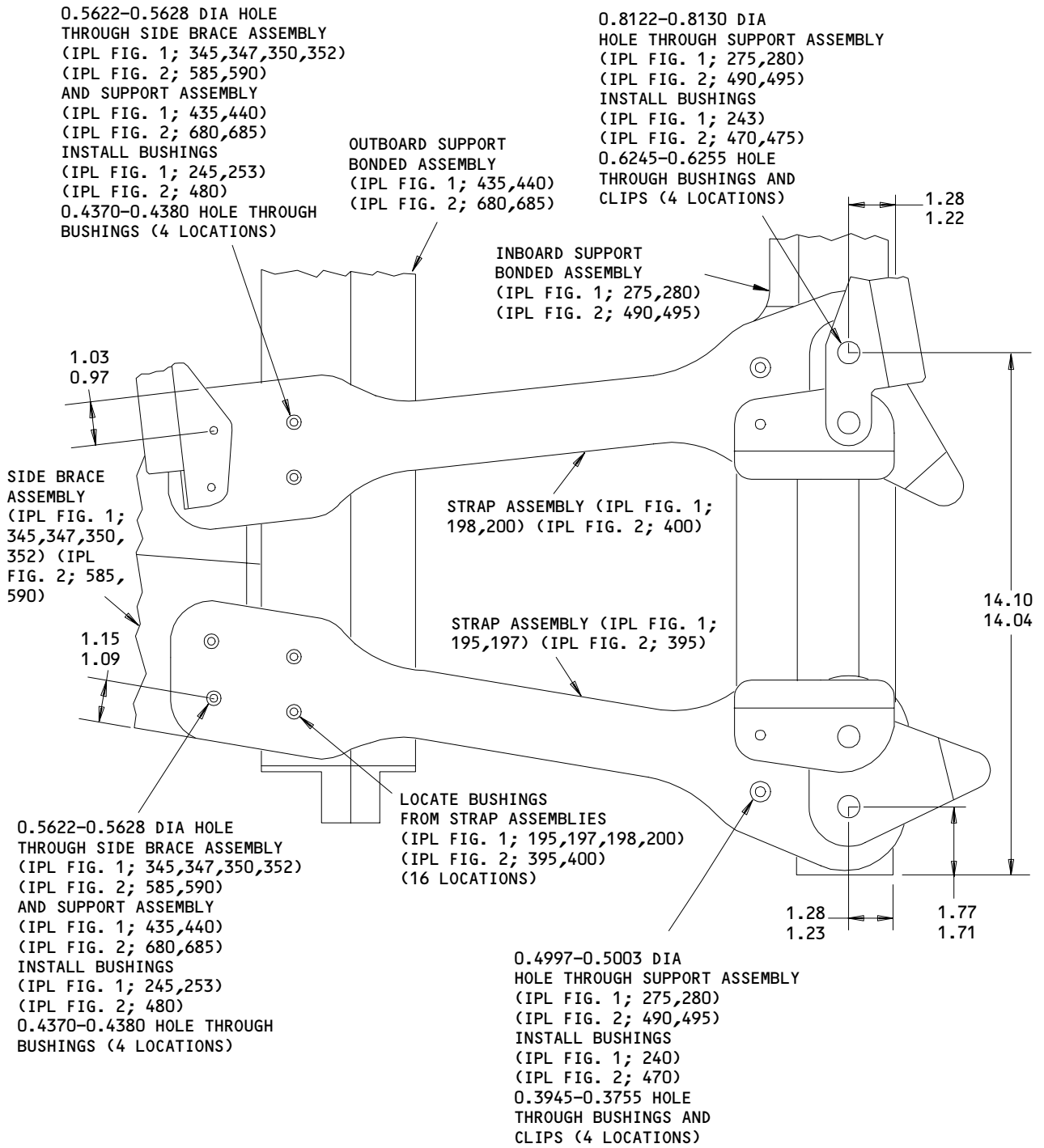
REPAIR 8-1

01.1

Page 602

Sep 01/95

**BOEING**  
**COMPONENT**  
**MAINTENANCE MANUAL**



ALL DIMENSIONS ARE IN INCHES

112T1717-1,-2,-7,-8,-11 THRU -24,-29 THRU -40  
 Bushing Replacement  
 Figure 601

**57-54-33**

REPAIR 8-1

Page 603

Sep 01/95

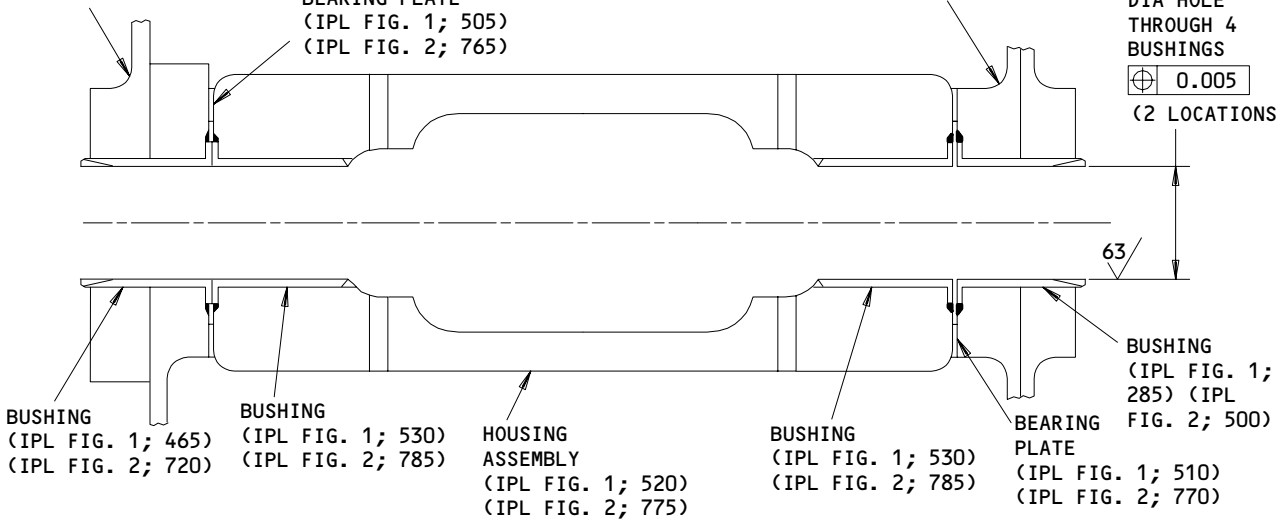
01.1

OUTBOARD SUPPORT  
 BONDED ASSEMBLY  
 (IPL FIG. 1; 435,440)  
 (IPL FIG. 2; 680,685)

INBOARD SUPPORT  
 BONDED ASSEMBLY  
 (IPL FIG. 1; 275,280)  
 (IPL FIG. 2; 490,495)

BEARING PLATE  
 (IPL FIG. 1; 505)  
 (IPL FIG. 2; 765)

1.4495-1.4515  
 DIA HOLE  
 THROUGH 4  
 BUSHINGS  
 (0.005)  
 (2 LOCATIONS)

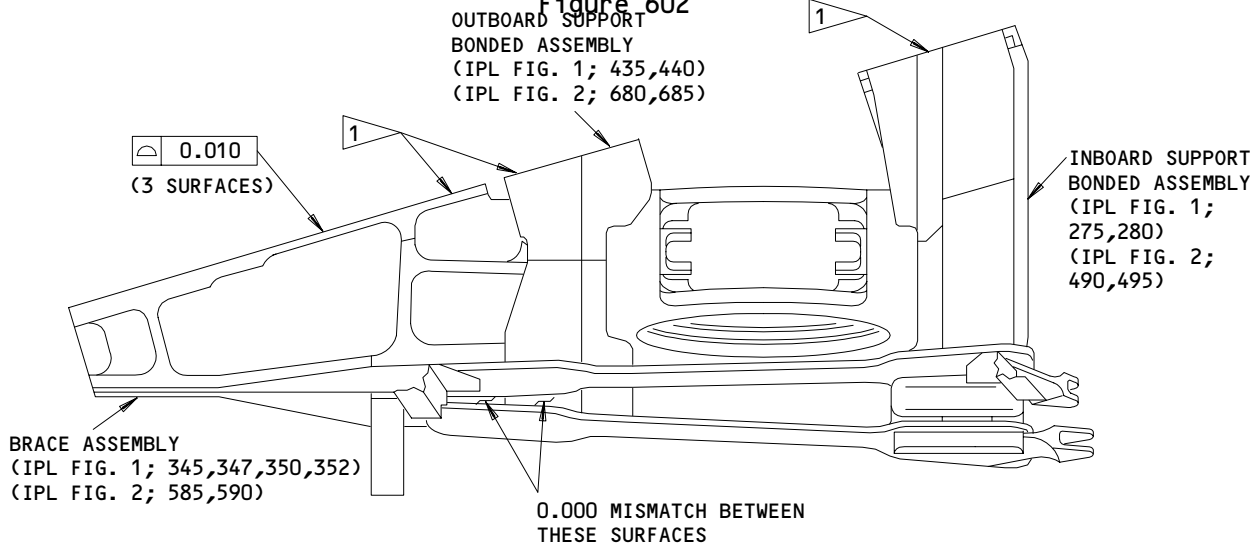


ALL DIMENSIONS ARE IN INCHES

112T1717-1,-2,-7,-8,-11 THRU -24,-29 THRU -40

Bushing Machining

Figure 602



1 IF SUPPORT ASSEMBLIES OR BRACE ASSEMBLY WERE REPLACED: MACHINE SURFACES, APPLY COLORED CHEMICAL COATING (F-17.10), THEN APPLY TWO COATS PRIMER (F-20.03).

ALL DIMENSIONS ARE IN INCHES

112T1717-1,-2,-7,-8,-11 THRU -24,-29 THRU -40

Assembly Machining and Refinish

Figure 603

145008

24366

**57-54-33**

REPAIR 8-1

01.1

Page 604

Sep 01/95

MISCELLANEOUS PARTS – REPAIR 9-1

1. Repair of parts listed in Fig. 601 consists of restoration of the original finish.

IPL FIG. & ITEM	MATERIAL	FINISH
<u>Fig. 1 and 2</u>		
Spacer (24,26, IPL Fig. 1; 75,85, IPL Fig. 2)	Al alloy	Chemically treat surface. Apply one coat BMS 10-11, type 1 primer (F-18.06) all over.
Brackets (39A,40,42A,43,75A, 76,78A,79,120A, 123A,177A,180A, IPL Fig. 1; 115,120, 125,130,135,140, 190,195,200,205, IPL Fig. 2)	Al alloy	Chemically treat bared aluminum surfaces. Apply one coat BMS 10-11, type 1 yellow primer (SRF-14.995). Apply BMS 10-60, BAC707 gray gloss enamel (SRF-14.9813) all over.
Bracket assy (81,84,150,153, IPL Fig. 1; 210,270, 355, IPL Fig. 2)	Al alloy	Chemically treat surface. Apply one coat BMS 10-11, type 1 primer (F-18.06) and apply BMS 10-60, BAC707 gray gloss enamel (SRF-14.9813) all over.
Shim (87,156, IPL Fig. 1; 250,335, IPL Fig. 2)	Al alloy	Chemically treat surface. Apply one coat BMS 10-11, type 1 primer (F-18.06) and apply BMS 10-60, BAC707 gray gloss enamel (SRF-14.9813) all over.
Pin (260, IPL Fig. 1; 15, IPL Fig. 2)	15-5 PH CRES, 150-170 KSI	Passivate (F-17.09).
Angle (289, IPL Fig. 1; 525, IPL Fig. 2)	Al alloy	Chromic acid anodize. Apply one coat BMS 10-11, type 1 primer (F-18.13) all over.
Plates (505,510, IPL Fig. 1; 765,770, IPL Fig. 2)	AISI 631	Cadmium plate per 20-42-05, type 2, class 2, and apply one coat BMS 10-11, type 1 primer (F-16.01) all over.

Refinish Details  
Figure 601

**57-54-33**

REPAIR 9-1

01.1

Page 601

Sep 01/95

ASSEMBLY1. Materials and Equipment

NOTE: Equivalent substitutes may be used.

- A. Enamel - BMS 10-60, BAC701 black gloss (Ref 20-60-02)
- B. Grease - MIL-G-23827 (Ref 20-60-03)
- C. Sealant - BMS 5-95 (Ref 20-60-04)
- D. Plates Bonding -- Customer furnished

2. Assembly (IPL Fig. 1 and 2)

CAUTION: FORWARD TRUNNION BEARING SUPPORT ASSEMBLY (1, 3, 5, IPL Fig. 1; 1, 5, IPL Fig. 2) IS A MATCHED ASSEMBLY. DO NOT INTERCHANGE SUBASSEMBLIES WITHOUT PERFORMING INDICATED MACHINING OR SUPPORT ASSEMBLY WILL NOT OPERATE PROPERLY AFTER ASSEMBLY.

- A. Use standard industry practices for assembly of this component and additional procedures in following steps.
- B. Assemble housing assembly (520, IPL Fig. 1; 775, IPL Fig. 2).
  - (1) Wipe threads of lube fittings (525, IPL Fig. 1; 780, IPL Fig. 2) using MIL-G-23827 grease prior to installation.
- C. Assemble forward trunnion bearing support assembly (1, 3, 5, IPL Fig. 1; 1, 5, IPL Fig. 2).
  - (1) Assemble combined support assembly (435, 440, IPL Fig. 1; 680, 685, IPL Fig. 2), brace assembly (345, 347, 350, 352, IPL Fig. 1; 585, 590, IPL Fig. 2, and shim (222, IPL Fig. 1; 440, IPL Fig. 2). Delaminate shim as necessary to minimize gap. Maximum allowable gap prior to fastener installation is 0.005 inch.
  - (2) Apply BMS 5-95 sealant between bearing plates (505, 510, IPL Fig. 1; 765, 770, IPL Fig. 2) and support assemblies (275, 280, 435, 440, IPL Fig. 1; 490, 495, 680, 685, IPL Fig. 2). Use bonding plates to hold bearing plates in position during bonding.

**57-54-33**ASSEMBLY  
Page 701  
Sep 01/95

01.1

- (3) Assemble combined outboard support assembly (435, 440, IPL Fig. 1; 680, 685, IPL Fig. 2), housing assembly (520, IPL Fig. 1; 775, IPL Fig. 2), and inboard support assembly (275, 280, IPL Fig. 1; 490, 495, IPL Fig. 2).

**NOTE:** If a combined support assembly (275, 280, 435, 440, IPL Fig. 1; 490, 495, 680, 685, IPL Fig. 2) or brace assembly (345, 347, 350, 352, IPL Fig. 1; 585, 590, IPL Fig. 2) has required replacement, verify indicated surfaces are as shown (Fig. 701).

- (a) Coat fuse pins (270, 272, IPL Fig. 1; 25, IPL Fig. 2) and mating parts using MIL-G-23827 grease and install.
- (b) Install washers (265, IPL Fig. 1; 20, IPL Fig. 2), retaining pins (260, IPL Fig. 1; 15, IPL Fig. 2), and cotter pins (255, IPL Fig. 1; 10, IPL Fig. 2) per 20-50-02.
- (c) Temporarily install shim (800, IPL Fig. 1). Tag shim stating "Delaminate as necessary. Install using MIL-G-23827 grease."

**NOTE:** Shim (800, IPL Fig. 1) will be permanently installed, and delaminated as required, when support assembly (1, 3, 5) is installed in airplane.

- (4) Install strap assemblies (195, 197, 198, 200, IPL Fig. 1; 395, 400, IPL Fig. 2).

- (a) Apply BMS 5-95 sealant to faying surfaces of brace assembly (345, 347, 350, 352, IPL Fig. 1; 585, 590, IPL Fig. 2), strap assemblies (195, 197, 198, 200, IPL Fig. 1; 395, 400, IPL Fig. 2) and outboard support assembly (435, 440, IPL Fig. 1; 680, 685, IPL Fig. 2). Fillet seal around edges.
- (b) Do not seal strap assemblies (195, 197, 198, 200, IPL Fig. 1; 395, 400, IPL Fig. 2) to inboard support assemblies (275, 280, IPL Fig. 1; 490, 495, IPL Fig. 2); positions may be adjusted upon installation in airplane. Tag strap assemblies (195, 197, 198, 200, IPL Fig. 1; 395, 400, IPL Fig. 2) stating "Apply BMS 5-95 sealant to faying surfaces upon installation in airplane. Fillet seal around edges."
- (c) Install strap assemblies (195, 197, 198, 200, IPL Fig. 1; 395, 400, IPL Fig. 2). Do not tighten nuts (21, 60, 108, 111, 138, 168, 210, 219, IPL Fig. 1; 65, 160, 255, 260, 295, 340, 420, 445, IPL Fig. 2); tag nuts stating "Nut not tightened. Tighten to (insert value from Fig. 801) following installation in airplane."

**57-54-33**

ASSEMBLY

01.1

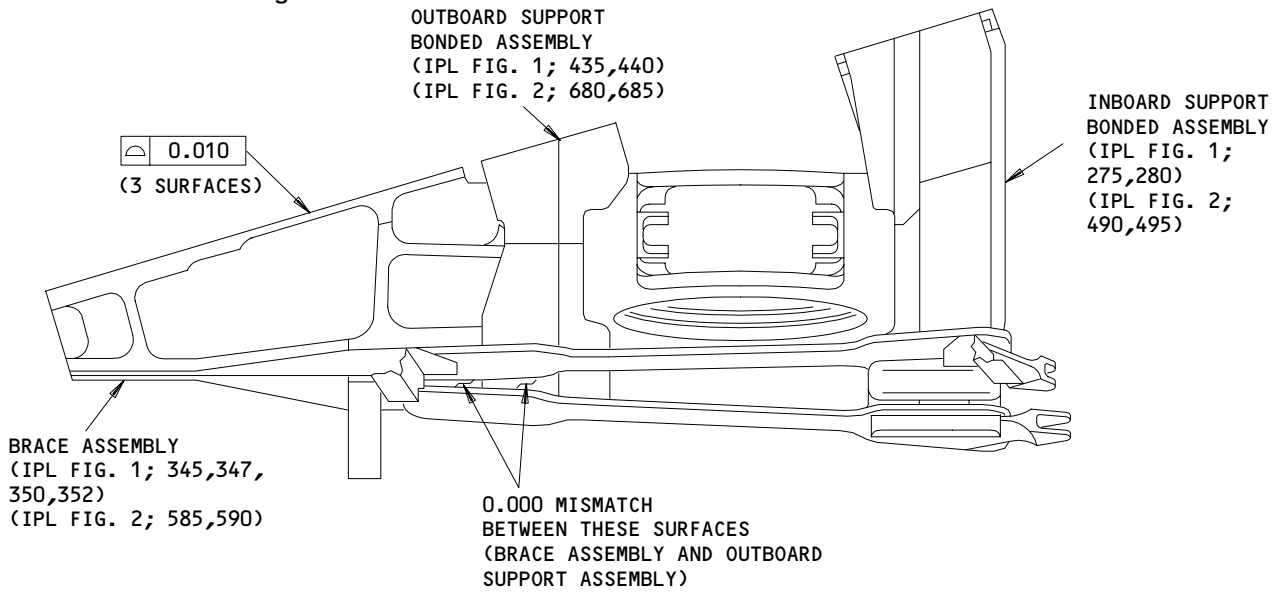
Page 702

Sep 01/95



**BOEING**  
**COMPONENT**  
**MAINTENANCE MANUAL**

(d) Stencil information as shown per 20-50-10 (Fig. 702). Paint letters 1 inch high; paint arrow 1 inch high. Use BMS 10-60, BAC701 black gloss enamel. Locate approximately as shown (Fig. 702).



ALL DIMENSIONS ARE IN INCHES

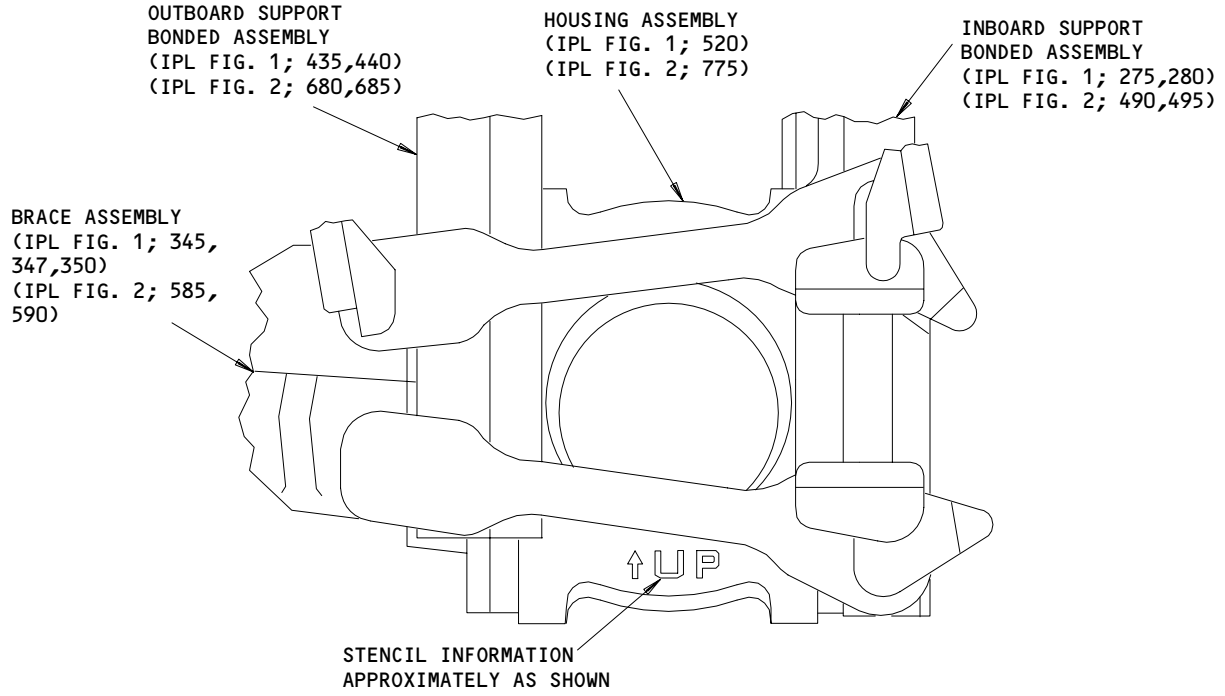
Assembly Machining  
 Figure 701

145003

**57-54-33**

ASSEMBLY  
 Page 703  
 Sep 01/95

**COMPONENT  
MAINTENANCE MANUAL**



Stencil Information  
Figure 702

24367

**57-54-33**

ASSEMBLY  
Page 704  
Sep 01/95

01.1

FITS AND CLEARANCES

FOR TORQUE VALUES OF STANDARD FASTENERS, REFER TO 20-50-01			
ITEM NO.	NAME	TORQUE	
		POUND-INCHES	POUND-FEET
IPL FIG. 1			
21,21A,111, 138	NUT	1400-1700	
60,219	NUT	370-610	
108,168,210	NUT	220-360	
IPL FIG. 2			
65,260,295	NUT	1900-2300	
160,445	NUT	510-840	
255,340,420	NUT	300-500	

TORQUE TABLE  
 Fig. 801

# 57-54-33

FITS AND CLEARANCES  
 01.1 Page 801  
 Sep 01/95



SPECIAL TOOLS, FIXTURES AND EQUIPMENT

NOTE: Equivalent substitutes may be used for listed items.

1. Jig Equipment, MLG Trunnion Support Reaming -- A57001-1

**57-54-33**

SPECIAL TOOLS

01

Page 901

Oct 01/87



ILLUSTRATED PARTS LIST

1. This section lists and illustrates replaceable or repairable component parts. The Illustrated Parts Catalog contains a complete explanation of the Boeing part numbering system.

2. Indentures show parts relationships as follows:

Assembly

Detail Parts for Assembly

Subassembly

Attaching Parts for Subassembly

Detail Parts for Subassembly

Detail Installation Parts (included only if installation parts may be returned to shop as part of assembly)

3. One use code letter (A, B, C, etc.,) is assigned in the EFF CODE column for each variation of top assembly. All listed parts are used on all top assemblies except when limitations are shown by use code letter opposite individual part entries.
4. Letter suffixes (alpha-variants) are added to item numbers for optional parts, Service Bulletin modification parts, configuration differences (except left- and right-hand parts), product improvement parts, and parts added between two sequential item numbers. The alpha-variant is not shown on illustrations when appearance and location of all variants of the part is the same.
5. Service Bulletin modifications are shown by the notations PRE SB XXXX and POST SB XXXX.
- A. When a new top assembly part number is assigned by Service Bulletin, the notations appear at the top assembly level only. The configuration differences at detail part level are then shown by use code letter.
- B. When the top assembly part number is not changed by the Service Bulletin, the notations appear at the detail part level.

6. Parts Interchangeability

Optional  
(OPT)

The parts are optional to and interchangeable with other parts having the same item number.

Supersedes, Superseded By  
(SUPSDS, SUPSD BY)

The part supersedes and is not interchangeable with the original part.

Replaces, Replaced By  
(REPLS, REPLD BY)

The part replaces and is interchangeable with, or is an alternate to, the original part.

**57-54-33**

ILLUSTRATED PARTS LIST

01

Page 1001

Oct 01/87

VENDORS

OPTK6 SPS TECHNOLOGIES INC AEROSPACE PRODUCTS DIV  
5195 W 4700 SPO BOX 18459  
KEARNS, UTAH 84118

06710 LAMSON AND SESSIONS CO THE VALLEY-TODECO  
12975 BRADLEY AVENUE  
SYLMAR, CALIFORNIA 91342-3830

06725 AIR INDUSTRIES CORPORATION  
12570 KNOTT STREET  
GARDEN GROVE, CALIFORNIA 92641-3932

08524 DEUTSCH FASTENER CORP SEE CODE V97928

10630 ANILLO INDUSTRIES, INCORPORATED  
2090 NORTH GLASSELL  
ORANGE, CALIFORNIA 92667

11815 CHERRY AEROSPACE FASTENERS DIV OF TEXTRON  
1224 EAST WARNER AVENUE PO BOX 2157  
SANTA ANA, CALIFORNIA 92707-0157

15653 KAYNAR TECHNOLOGY KAYNAR DIV  
800 SOUTH STATE COLLEGE BLVD PO BOX 3001  
FULLERTON, CALIFORNIA 92634-3001

27238 BRISTOL INDUSTRIES  
630 EAST LAMBERT ROAD PO BOX 630  
BREA, CALIFORNIA 92621-4119

27624 PB FASTENERS DIV OF BRILES PAUL R  
1700 WEST 132ND STREET  
GARDENA, CALIFORNIA 90249

50945 MERCURY AEROSPACE FASTENERS INC  
11800 SHERMAN AVENUE PO BOX 9759  
NORTH HOLLYWOOD, CALIFORNIA 91609

52828 REPUBLIC FASTENER MFG CORP  
1300 RANCHO CONEJO BLVD  
NEWBURY PARK, CALIFORNIA 91320-1405

56878 SPS TECHNOLOGIES INC AEROSPACE AND INDUSTRIAL PRODUCTS DIV  
HIGHLAND AVENUE  
JENKINTOWN, PENNSYLVANIA 19046

**57-54-33**

ILLUSTRATED PARTS LIST  
01.1 Page 1002  
Sep 01/95

VENDORS

60516 WEST COAST AEROSPACE INC  
812 MIRAFLORES STREET  
SAN PEDRO, CALIFORNIA 90731-1439

62554 SIMMONDS MECAERO FASTENERS INC  
1734 SEQUOIA AVENUE  
ORANGE, CALIFORNIA 92668

72962 ELASTIC STOP NUT A DIV OF HARTFORD INDUSTRIES INC  
2330 VAUXHALL ROAD  
UNION, NEW JERSEY 07083-5038

73197 HI-SHEAR TECHNOLOGY CORP  
2600 SKYPARK DRIVE  
TORRANCE, CALIFORNIA 90509

80539 SPS TECHNOLOGIES INC AEROSPACE PRODUCTS DIV  
2701 SOUTH HARBOR BOULEVARD PO BOX 1259  
SANTA ANA, CALIFORNIA 92702-1259

92215 FAIRCHILD IND INC FAIRCHILD AEROSP FASTNR DIV DESIGN & ENGRG  
3000 WEST LOMITA BLVD  
TORRANCE, CALIFORNIA 90505-5102

97928 DEUTSCH FASTENER CORP  
3969 PARAMONT BOULEVARD  
LAKEWOOD, CALIFORNIA 90712-4193

**57-54-33**ILLUSTRATED PARTS LIST  
01.1 Page 1003  
Sep 01/95

PART NUMBER	AIRLINE PART NO.	FIG.	ITEM	TTL REQ
AN960-416L		1	305	12
		1	405	3
		1	475	5
		2	555	12
		2	645	3
		2	735	5
AN960C1016L		1	18	2
		1	105	1
		1	135	1
AN960C416L		1	265	8
		2	20	8
AN960C616L		1	102	1
		1	165	1
		1	207A	2
		1	360A	6
AN960C716L		2	600	6
		1	57	2
		1	216A	6
BACB28AA12B105		1	370	1
		2	610	1
BACB28AM06B011A		1	144	1
		1	189	1
		2	305	1
		2	385	1
BACB28AP04P011		1	141	1
		1	186	1
		2	300	1
		2	380	1
BACB28U10B035		1	243	4
		2	475	4
BACB28U10F024		1	231	4
BACB28U10F032		1	232	4
		2	455	4
BACB28U6B035		1	240	4
		2	470	4
BACB28U6F024		1	228	4
BACB28U6F032		1	229	4
		2	457	4
BACB28U7B078		1	253B	8
BACB28U7B080		2	480	8
BACB28U7B088		1	253A	8
BACB28W14C100		1	375	1
		2	615	1
BACB28W7F024		1	225	8
BACB28W7F032		1	226	8
		2	450	8

57-54-33

 ILLUSTRATED PARTS LIST  
 01.1 Page 1004  
 Sep 01/95




**BOEING**  
 COMPONENT  
 MAINTENANCE MANUAL

PART NUMBER	AIRLINE PART NO.	FIG.	ITEM	TTL REQ
BACB30LE10-19		1	131	1
BACB30LE10-20		1	95	1
BACB30LE10-22		1	12B	2
BACB30LE6-15		1	203	2
BACB30LE6-19		1	92	1
		1	160	1
BACB30LE7-19		1	213A	6
BACB30LE7-21		1	52	2
BACB30MY12K12		1	355A	6
		2	595	6
BACB30NM10K17		1	129A	1
BACB30NM10K18		1	93A	1
BACB30NM10K20		1	12A	2
BACB30NR6K13		1	201	2
BACB30NR6K18		1	90A	1
		1	159A	1
BACB30NR7K17		1	213	6
BACB30NR7K19		1	51	2
BACB30NX8K15		1	400	3
		2	640	3
BACB30NX8K17		1	470	1
		2	730	1
BACB30NX8K9		1	300	12
		1	467	4
		2	550	12
		2	725	4
BACB30US10K19		1	131B	1
		2	280	1
BACB30US10K20		1	95B	1
		2	225	1
BACB30US10K23		1	12D	2
		2	50	2
BACB30US6K15		1	203B	2
		2	320	1
		2	405	2
BACB30US6K19		1	92B	1
		1	160B	1
		2	220	1
BACB30US7K21		1	213C	6
		2	425	6

57-54-33

 ILLUSTRATED PARTS LIST  
 01.1 Page 1005  
 Sep 01/95

PART NUMBER	AIRLINE PART NO.	FIG.	ITEM	TTL REQ
BACB30US7K23		1	52B	2
BACB30US7K23		2	145	2
BACC30X8		1	310	12
		1	410	3
		1	480	5
		2	560	12
		2	650	3
		2	740	5
BACN10HR10		1	21A	2
		1	113	1
		1	140	1
BACN10HR10CD		1	21B	2
		1	113A	1
		1	140A	1
		2	65	2
		2	260	1
		2	295	1
BACN10HR6		1	110	1
		1	211	2
BACN10HR6CD		1	110A	1
		1	211A	2
		2	255	1
		2	340	1
		2	420	2
BACN10HR7		1	62A	2
		1	220	6
BACN10HR7CD		1	62B	2
		1	220A	6
		2	160	2
		2	445	6
BACN10JC6		1	365	6
		2	605	6
BACN10JN3		1	27	3
		1	30	2
		1	63	3
		1	66	2
		2	90	3
		2	95	2
		2	165	3
BACN10JN3		2	170	2
BACN10JP3A		1	288B	2
		2	520B	2
BACN10JP3B		1	288	2
		2	520	2

57-54-33

 ILLUSTRATED PARTS LIST  
 01.1 Page 1006  
 Sep 01/95


**BOEING**  
 COMPONENT  
 MAINTENANCE MANUAL

PART NUMBER	AIRLINE PART NO.	FIG.	ITEM	TTL REQ
BACN10KA3C		1	114	3
		1	171	3
		2	267	3
BACN10KB3		2	350	3
		1	288A	2
		2	520A	2
BACR15BA3AD		1	23	2
		1	25	2
		1	33	6
		1	36	4
		1	69	6
		1	72	4
		1	117	6
		1	174	6
		1	287	4
		2	70	2
		2	80	2
		2	100	6
		2	105	4
		2	175	6
		2	180	4
	2	265	6	
	2	345	6	
	2	515	4	
BACR15FT5AD		1	37	4
		1	74	4
		2	110	4
BACR15FT6AD		2	185	4
		1	442	6
		2	690	6
BACR15FT8AD		2	505	2
BACR15FT8AD15		1	283A	2
BACS40R020B100F		2	440	1
BACS40R033D035F		2	485	1
BACS40R20B100F		1	222	1
BACS40R32D035F		1	239	1
BACS40R33D035F		1	239G	1
BACW10BN10AC		1	15	2
		1	99	1
		1	132	1
BACW10BN6AC		1	96	1
		1	162	1
		1	204	2
BACW10BN7AC		1	54	2
		1	214	6

57-54-33

 ILLUSTRATED PARTS LIST  
 01.1 Page 1007  
 Sep 01/95

PART NUMBER	AIRLINE PART NO.	FIG.	ITEM	TTL REQ
BACW10BP10C		1	15A	2
		1	101	1
		1	133	1
		2	55	2
		2	235	1
		2	285	1
BACW10BP10P		1	18A	2
		1	107	1
		1	137	1
		2	60	2
		2	245	1
		2	290	1
BACW10BP6C		1	98	1
		1	163	1
		1	206	2
		2	230	1
BACW10BP6C		2	325	1
		2	410	2
BACW10BP6P		1	103	1
		1	167	1
		1	208	2
		2	240	1
		2	330	1
		2	415	2
BACW10BP7C		1	56	2
		1	215	6
		2	150	2
		2	430	6
BACW10BP7P		1	59	2
		1	217	6
		2	155	2
		2	435	6

**57-54-33**

 ILLUSTRATED PARTS LIST  
 01.1 Page 1008  
 Sep 01/95


**BOEING**  
 COMPONENT  
 MAINTENANCE MANUAL

PART NUMBER	AIRLINE PART NO.	FIG.	ITEM	TTL REQ
BACW10HR6		1	170	1
BH00302-6		1	110	1
		1	211	2
BH00302-7		1	62A	2
		1	220	6
BH003026		1	110	1
		1	211	2
BH003026CD		1	110A	1
		1	211A	2
		2	255	1
		2	340	1
		2	420	2
BH003027		1	62A	2
		1	220	6
BH00303CM10		1	21B	2
		1	113A	1
		1	140A	1
		2	65	2
		2	260	1
		2	295	1
BH00303CM6		1	110A	1
		1	211A	2
		2	255	1
		2	340	1
		2	420	2
BH00303CM7		1	62B	2
		1	220A	6
		2	160	2
		2	445	6
BMNN10HR10		1	21A	2
		1	113	1
		1	140	1

57-54-33

 ILLUSTRATED PARTS LIST  
 01.1 Page 1009  
 Sep 01/95

PART NUMBER	AIRLINE PART NO.	FIG.	ITEM	TTL REQ
BMNN1OHR6		1	110	1
		1	211	2
BMNN1OHR6CD		1	110A	1
		1	211A	2
		2	255	1
		2	340	1
		2	420	2
BMNN1OHR7		1	62A	2
		1	220	6
BMN1OHR CWD3-10		1	21B	2
		1	113A	1
		1	140A	1
		2	65	2
		2	260	1
		2	295	1
BMN1OHR CWD3-6		1	110A	1
		1	211A	2
BMN1OHR CWD3-6		2	255	1
		2	340	1
		2	420	2
		1	21B	2
		1	113A	1
BMN5024 CWD3-10		1	140A	1
		2	65	2
		2	260	1
		2	295	1
		1	110A	1
		1	211A	2
BMN5024 CWD3-6		2	255	1
		2	340	1
		2	420	2
		1	110A	1
		1	211A	2
BMN5024 CWD36		2	255	1
		2	340	1
		2	420	2
		2	420	2

**57-54-33**

 ILLUSTRATED PARTS LIST  
 01.1 Page 1010  
 Sep 01/95


**BOEING**  
 COMPONENT  
 MAINTENANCE MANUAL

PART NUMBER	AIRLINE PART NO.	FIG.	ITEM	TTL REQ
BMN5024CWD37		1	62B	2
		1	220A	6
		2	160	2
		2	445	6
BRFM20A3		1	27	3
		1	30	2
		1	63	3
		1	66	2
		2	90	3
		2	95	2
		2	165	3
		2	170	2
BRH10A6		1	365	6
		2	605	6
BRM100A3		1	288	2
		2	520	2
BRM200A3		1	288B	2
		2	520B	2
BR1000A3		1	288A	2
		2	520A	2
CR59066		1	110	1
		1	211	2
CR59066CD		1	110A	1
		1	211A	2
CR59066CD		2	255	1
		2	340	1
		2	420	2
CR59067		1	62A	2
		1	220	6
CR603010		1	21B	2
		1	113A	1
		1	140A	1
		2	65	2
		2	260	1
		2	295	1
CR60306		1	110A	1
		1	211A	2
		2	255	1
		2	340	1
		2	420	2
CR60307		1	62B	2
		1	220A	6
		2	160	2
		2	445	6
HL10VAZ12-12		1	355A	6
		2	595	6

57-54-33

 ILLUSTRATED PARTS LIST  
 01.1 Page 1011  
 Sep 01/95

PART NUMBER	AIRLINE PART NO.	FIG.	ITEM	TTL REQ
HL1187-8		1	310	12
		1	410	3
		1	480	5
		2	560	12
		2	650	3
		2	740	5
HL12-15		1	400	3
		2	640	3
HL12-17		1	470	1
		2	730	1
HL12VAZ8-15		1	400	3
		2	640	3
HL12VAZ8-17		1	470	1
		2	730	1
HL12VAZ8-9		1	300	12
		1	467	4
		2	550	12
		2	725	4
HL87-8		1	310	12
		1	410	3
		1	480	5
HL87-8		2	560	12
		2	650	3
		2	740	5
		2	365	6
H10-6BAC		1	365	6
		2	605	6
H51560		1	110A	1
		1	211A	2
		2	255	1
		2	340	1
		2	420	2
		2	21B	2
H51560-10		1	113A	1
		1	140A	1
		2	65	2
		2	260	1
		2	295	1
		2	295	1
H51560-6		1	110A	1
		1	211A	2
		2	255	1
		2	340	1
		2	420	2
		2	420	2

**57-54-33**

 ILLUSTRATED PARTS LIST  
 01.1 Page 1012  
 Sep 01/95




**BOEING**  
 COMPONENT  
 MAINTENANCE MANUAL

PART NUMBER	AIRLINE PART NO.	FIG.	ITEM	TTL REQ
H51560-7		1	62B	2
		1	220A	6
		2	160	2
		2	445	6
H96-6		1	110	1
		1	211	2
H96-7		1	62A	2
		1	220	6
H9610		1	21A	2
		1	113	1
		1	140	1
H966		1	110	1
		1	211	2
H966CD		1	110A	1
		1	211A	2
		2	255	1
		2	340	1
		2	420	2
		1	62A	2
H967		1	220	6
		1	288A	2
K2000-3		2	520A	2
		1	400	3
L802-8K15		2	640	3
		1	470	1
L802-8K17		2	730	1
		1	300	12
L802-8K9		1	467	4
		2	550	12
		2	725	4
		1	27	3
		1	30	2
		1	63	3
MF1000-3BAC		1	66	2
		2	90	3
		2	95	2
		2	165	3
		2	170	2

57-54-33

 ILLUSTRATED PARTS LIST  
 01.1 Page 1013  
 Sep 01/95

PART NUMBER	AIRLINE PART NO.	FIG.	ITEM	TTL REQ		
MF53049-3		1	27	3		
		1	30	2		
		1	63	3		
		1	66	2		
		2	90	3		
		2	95	2		
		2	165	3		
		2	170	2		
		MK1000-3BAC		1	288B	2
				2	520B	2
MK2000-3BAC		1	288	2		
		2	520	2		
MS15720-1		1	525	2		
		2	780	2		
MS24665-153		1	255	16		
MS24665-153		2	10	16		
NAS1805-10		1	21	2		
		1	111	1		
		1	138	1		
NAS1805-6		1	108	1		
		1	168	1		
		1	210	2		
NAS1805-7		1	60	2		
		1	219	6		
NS103197-02		1	288B	2		
		2	520B	2		
NS103198-02		1	288	2		
		2	520	2		
NS103218-02		1	27	3		
		1	30	2		
		1	63	3		
		1	66	2		
		2	90	3		
		2	95	2		
		2	165	3		
		2	170	2		

**57-54-33**

 ILLUSTRATED PARTS LIST  
 01.1 Page 1014  
 Sep 01/95


**BOEING**  
 COMPONENT  
 MAINTENANCE MANUAL

PART NUMBER	AIRLINE PART NO.	FIG.	ITEM	TTL REQ
NS103228-02		1	114	3
		1	171	3
		2	267	3
		2	350	3
		2	520B	2
RMA9201M3		1	288B	2
		2	520B	2
RMA9207-3		1	288	2
		2	520	2
RMF9201M3		1	27	3
		1	30	2
		1	63	3
		1	66	2
		2	90	3
		2	95	2
		2	165	3
		2	170	2
		1	110A	1
		1	211A	2
RMLH22		2	255	1
		2	340	1
		2	420	2
		1	110	1
		1	211	2
		1	62A	2
RMLH22-6		1	220	6
		1	21A	2
		1	113	1
RMLH22-7		1	140	1
		1	110	1
		1	211	2
RMLH2210		1	62A	2
		1	220	6
RMLH226		1	220	6
		1	365	6
RMLH227		1	605	6
		2	605	6
RMLH9075-6		2	605	6

57-54-33

 ILLUSTRATED PARTS LIST  
 01.1 Page 1015  
 Sep 01/95

PART NUMBER	AIRLINE PART NO.	FIG.	ITEM	TTL REQ
SL7058S624		1	110	1
		1	211	2
SL7108C10		1	21B	2
		1	113A	1
		1	140A	1
		2	65	2
		2	260	1
		2	295	1
SL7108C6		1	110A	1
		1	211A	2
		2	255	1
		2	340	1
		2	420	2
SL7108C624		1	110A	1
		1	211A	2
		2	255	1
		2	340	1
		2	420	2
SL7108C7		1	62B	2
		1	220A	6
		2	160	2
		2	445	6
T8076S1032		1	288B	2
		2	520B	2
T8077S1032		1	288	2
		2	520	2
T8101S3SK		1	114	3
		1	171	3
		2	267	3
T8101S3SK		2	350	3
T8109S1032		1	288A	2
		2	520A	2
VAL280096		1	110	1
		1	211	2
VAL280096CD		1	110A	1
		1	211A	2
		2	255	1
		2	340	1
		2	420	2
VAL280097		1	62A	2
		1	220	6
VCU0005D		1	110A	1
		1	211A	2
		2	255	1
		2	340	1
		2	420	2

**57-54-33**

 ILLUSTRATED PARTS LIST  
 01.1 Page 1016  
 Sep 01/95


**BOEING**  
 COMPONENT  
 MAINTENANCE MANUAL

PART NUMBER	AIRLINE PART NO.	FIG.	ITEM	TTL REQ
VCU0005D10		1	21B	2
		1	113A	1
		1	140A	1
		2	65	2
		2	260	1
		2	295	1
VCU0005D7		1	62B	2
		1	220A	6
		2	160	2
		2	445	6
VN101A1-02		1	288A	2
		2	520A	2
VN201A1-02		1	288	2
		2	520	2
VN202A1-02		1	288B	2
		2	520B	2
VN252A02		1	27	3
		1	30	2
		1	63	3
		1	66	2
		2	90	3
		2	95	2
		2	165	3
		2	170	2
102LH9031-10		1	21B	2
		1	113A	1
		1	140A	1
		2	65	2
102LH9031-10		2	260	1
		2	295	1
		1	110A	1
102LH9031-6		1	211A	2
		2	255	1
		2	340	1
		2	420	2
		1	62B	2
102LH9031-7		1	220A	6
		2	160	2
		2	445	6
		1	110A	1
102LH90316		1	211A	2
		2	255	1
		2	340	1
		2	420	2
		1	110A	1
		1	211A	2

57-54-33

 ILLUSTRATED PARTS LIST  
 01.1 Page 1017  
 Sep 01/95

PART NUMBER	AIRLINE PART NO.	FIG.	ITEM	TTL REQ
102LH90317		1	62B	2
		1	220A	6
		2	160	2
		2	445	6
112T1011-1		1	345	1
112T1011-10		1	387	1
112T1011-11		1	392	1
112T1011-12		1	397	1
112T1011-13		1	347A	1
		2	585	1
112T1011-14		1	352A	1
		2	590	1
112T1011-15		1	383A	1
		2	620	1
112T1011-16		1	387A	1
		2	625	1
112T1011-17		1	392A	1
		2	630	1
112T1011-18		1	397A	1
		2	635	1
112T1011-2		1	350	1
112T1011-3		1	380	1
112T1011-4		1	385	1
112T1011-5		1	390	1
112T1011-6		1	395	1
112T1011-7		1	347	1
112T1011-8		1	352B	1
112T1011-9		1	383	1
112T1012-1		1	485	1
112T1012-2		1	490	1
112T1012-5		1	485A	1

**57-54-33**

 ILLUSTRATED PARTS LIST  
 01.1 Page 1018  
 Sep 01/95


**BOEING**  
 COMPONENT  
 MAINTENANCE MANUAL

PART NUMBER	AIRLINE PART NO.	FIG.	ITEM	TTL REQ
112T1012-6		1	490A	1
112T1012-7		1	485B	1
		2	745	1
112T1012-8		1	490B	1
		2	750	1
112T1013-1		1	290	1
112T1013-10		2	570	1
112T1013-2		1	295	1
112T1013-5		1	290A	1
112T1013-6		1	295B	1
112T1013-7		1	290B	1
		2	565A	1
112T1013-8		1	295C	1
		2	570A	1
112T1013-9		2	565	1
112T1017-1		1	535	1
		2	790	1
112T1017-3		1	535A	1
		2	790A	1
112T1018-1		1	520	1
		2	775	1
112T1019-10		2	580	1
112T1019-3		1	335A	1
112T1019-4		1	340	1
112T1019-5		1	335B	1
112T1019-6		1	340A	1
112T1019-7		1	335C	1
		2	575A	1
112T1019-8		1	340B	1
		2	580A	1
112T1019-9		2	575	1

# 57-54-33

 ILLUSTRATED PARTS LIST  
 01.1 Page 1019  
 Sep 01/95

PART NUMBER	AIRLINE PART NO.	FIG.	ITEM	TTL REQ
112T1020-3		1	495	1
112T1020-4		1	500	1
112T1020-5		1	495A	1
112T1020-6		1	500A	1
112T1020-7		1	495B	1
		2	755	1
112T1020-8		1	500B	1
		2	760	1
112T1035-1		1	270	4
		2	25A	4
112T1035-3		2	25C	4
112T1038-1		1	285	2
		1	465	2
		2	500	2
		2	720	2
112T1039-1		1	530	4
		2	785	4
112T1045-3		1	234	2
112T1045-5		1	195	1
112T1045-6		1	198	1
112T1045-7		1	197	1
		2	395	1
112T1045-8		1	200	1
		2	400	1
112T1045-9		1	236	2
		2	460	2
112T1078-1		1	272	4
		2	25B	4
112T1078-2		1	272A	4
		2	25	4
112T1078-3		2	25D	4
112T1103-1		1	260	8
		2	15	8
112T1220-1		1	237	4
112T1220-2		1	238	4
		2	465	4
112T1221-1		1	415	1
		2	655	1

**57-54-33**

 ILLUSTRATED PARTS LIST  
 01.1 Page 1020  
 Sep 01/95




**BOEING**  
 COMPONENT  
 MAINTENANCE MANUAL

PART NUMBER	AIRLINE PART NO.	FIG.	ITEM	TTL REQ
112T1221-10		1	422B	1
		2	665	1
112T1221-2		1	420	1
112T1221-5		1	417	1
112T1221-6		1	422	1
112T1221-7		1	417A	1
112T1221-8		1	422A	1
112T1221-9		1	417B	1
		2	660	1
112T1222-1		1	425	1
112T1222-10		1	432B	1
		2	675	1
112T1222-2		1	430	1
112T1222-5		1	427	1
112T1222-6		1	432	1
112T1222-7		1	427A	1
112T1222-8		1	432A	1
112T1222-9		1	427B	1
		2	670	1
112T1710-10		1	450	1
112T1710-11		1	455	1
112T1710-12		1	460	1
112T1710-15		1	445A	1
		2	700	1
112T1710-16		1	450A	1
		2	705	1
112T1710-17		1	455A	1
		2	710	1
112T1710-18		1	460A	1
		2	715	1
112T1710-19		1	435B	1
		2	680	1
112T1710-20		1	440B	1
		2	685	1
112T1710-7		1	435	1
112T1710-8		1	440	1
112T1710-9		1	445	1
112T1711-10		1	320A	1
112T1711-11		1	325A	1
112T1711-12		1	330A	1
112T1711-13		1	275A	1
		2	490A	1

57-54-33

 ILLUSTRATED PARTS LIST  
 01.1 Page 1021  
 Sep 01/95

PART NUMBER	AIRLINE PART NO.	FIG.	ITEM	TTL REQ
112T1711-14		1	280A	1
		2	495A	1
112T1711-15		1	315B	1
		2	530A	1
112T1711-16		1	320B	1
		2	535A	1
112T1711-17		1	325B	1
		2	540A	1
112T1711-18		1	330B	1
		2	545A	1
112T1711-19		2	490	1
112T1711-20		2	495	1
112T1711-21		2	530	1
112T1711-22		2	535	1
112T1711-23		2	540	1
112T1711-24		2	545	1
112T1711-7		1	275	1
112T1711-8		1	280	1
112T1711-9		1	315A	1
112T1717-1		1	1	RF
112T1717-11		1	1C	RF
112T1717-12		1	5C	RF
112T1717-13		1	1D	RF
112T1717-14		1	5D	RF
112T1717-15		1	1E	RF
112T1717-16		1	5E	RF
112T1717-17		1	1F	RF
112T1717-18		1	5F	RF
112T1717-2		1	5	RF
112T1717-27		2	30	1
112T1717-28		2	35	1

# 57-54-33

 ILLUSTRATED PARTS LIST  
 01.1 Page 1022  
 Sep 01/95


**BOEING**  
 COMPONENT  
 MAINTENANCE MANUAL

PART NUMBER	AIRLINE PART NO.	FIG.	ITEM	TTL REQ
112T1717-29		1	1K	RF
		2	1	RF
112T1717-3		1	510	1
		2	770	1
112T1717-30		1	5K	RF
		2	5	RF
112T1717-31		1	1L	RF
		2	1A	RF
112T1717-32		1	5L	RF
		2	5A	RF
112T1717-33		1	1M	RF
		2	1B	RF
112T1717-34		1	5M	RF
		2	5B	RF
112T1717-35		1	1N	RF
		2	1C	RF
112T1717-36		1	5N	RF
		2	5C	RF
112T1717-37		1	1P	RF
		2	1D	RF
112T1717-38		1	5P	RF
		2	5D	RF
112T1717-39		1	1Q	RF
		2	1E	RF
112T1717-4		1	505	1
		2	765	1
112T1717-40		1	5Q	RF
		2	5E	RF
112T1717-7		1	1B	RF
112T1717-8		1	5B	RF
112T1717-9		1	800	1
113T1893-1		1	183	1
		2	370	1
113T1893-2		1	126	1

# 57-54-33

 ILLUSTRATED PARTS LIST  
 01.1 Page 1023  
 Sep 01/95

PART NUMBER	AIRLINE PART NO.	FIG.	ITEM	TTL REQ
113T1893-2		2	275	1
113T1893-3		1	192	1
		2	390	1
113T1893-4		1	147	1
		2	310	1
272T1441-10		1	43	1
		1	79	1
		2	130	1
		2	205	1
272T1441-11		1	45A	1
272T1441-12		1	48A	1
272T1441-13		1	6A	1
272T1441-14		1	9A	1
272T1441-15		1	75A	1
		2	190	1
272T1441-16		1	78A	1
		2	200	1
272T1441-17		1	39A	1
		2	115	1
272T1441-18		1	42A	1
		2	125	1
272T1441-19		1	76	1
		2	195	1
272T1441-20		1	40	1
		2	120	1
272T1441-21		1	45B	1
		2	135	1
272T1441-22		1	48B	1
		2	140	1
272T1441-23		1	6B	1
		2	40	1
272T1441-24		1	9B	1
		2	45	1
272T1441-9		1	24	1
		1	26	1
		2	75	1
		2	85	1
287T0020-25		1	286	1
		2	510	1

**57-54-33**

 ILLUSTRATED PARTS LIST  
 01.1 Page 1024  
 Sep 01/95


**BOEING**  
 COMPONENT  
 MAINTENANCE MANUAL

PART NUMBER	AIRLINE PART NO.	FIG.	ITEM	TTL REQ
287T0020-26		1	289	1
		2	525	1
287T1026-1		1	443	1
		2	695	1
287T6115-1		1	81	1
		1	153A	1
287T6115-10		2	315	1
287T6115-2		1	84	1
		1	150A	1
287T6115-3		1	84A	1
		1	150	1
287T6115-4		1	81A	1
		1	153	1
287T6115-5		1	120A	1
		1	180B	1
		2	270	1
287T6115-6		1	123A	1
		1	177B	1
		2	355	1
287T6115-7		1	123B	1
		1	177A	1
287T6115-8		1	120B	1
		1	180A	1
287T6115-9		2	210	1
287T6118-1		1	87	1
		1	156	1
		2	250	1
		2	335	1
67832-624		1	110	1
		1	211	2
67832-720		1	62A	2
		1	220	6
67832CD1018		1	21B	2
		1	113A	1
		1	140A	1
		2	65	2
		2	260	1
		2	295	1
67832CD6		1	110A	1
		1	211A	2
		2	255	1
		2	340	1
		2	420	2

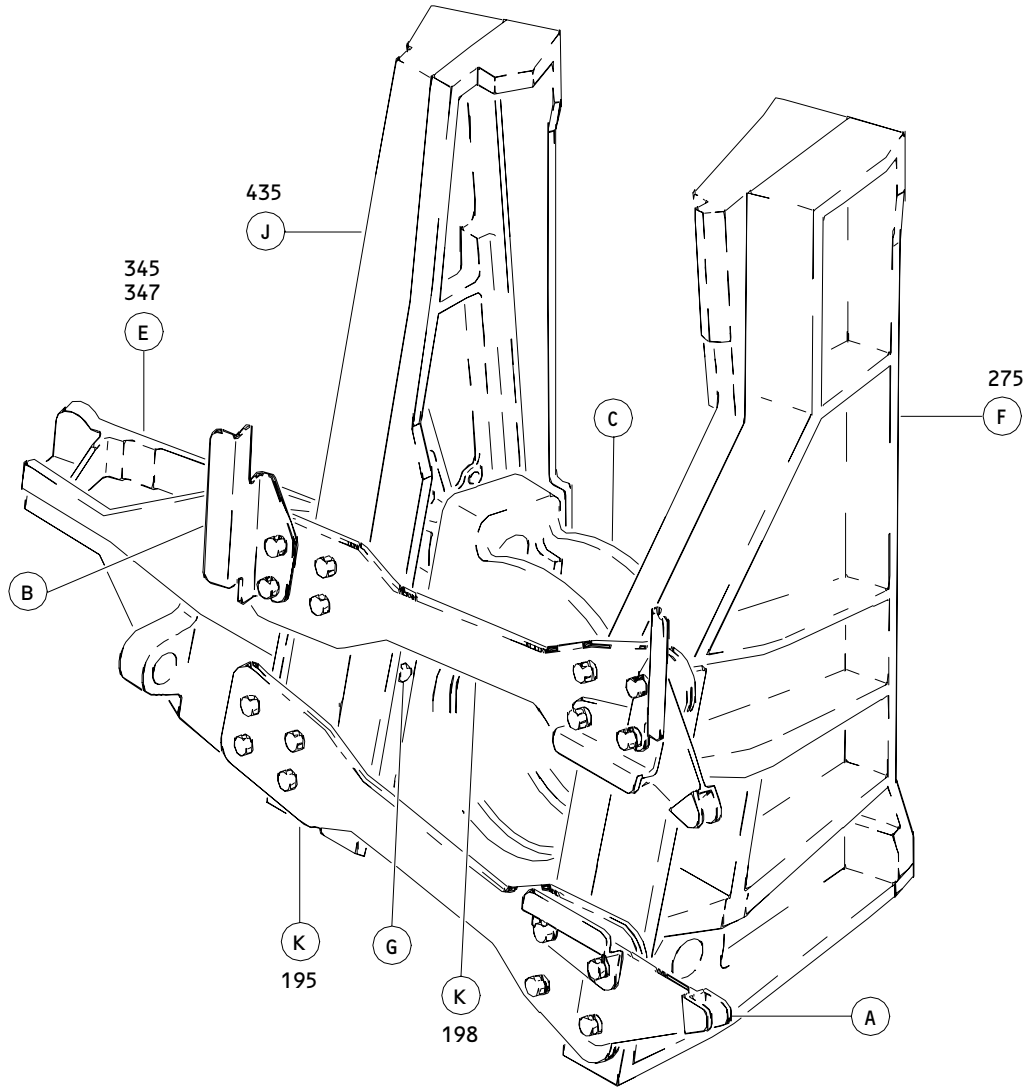
# 57-54-33

 ILLUSTRATED PARTS LIST  
 01.1 Page 1025  
 Sep 01/95

PART NUMBER	AIRLINE PART NO.	FIG.	ITEM	TTL REQ
67832CD624		1	110A	1
		1	211A	2
		2	255	1
		2	340	1
		2	420	2
67832CD7		1	62B	2
		1	220A	6
		2	160	2
67832CD7		2	445	6
67832CD720		1	62B	2
		1	220A	6
		2	160	2
		2	445	6
678321018		1	21A	2
		1	113	1
		1	140	1
678326		1	110	1
		1	211	2
678326CD		1	110A	1
		1	211A	2
		2	255	1
		2	340	1
		2	420	2
678327		1	62A	2
		1	220	6
96-064		1	365	6
		2	605	6

**57-54-33**

 ILLUSTRATED PARTS LIST  
 01.1 Page 1026  
 Sep 01/95



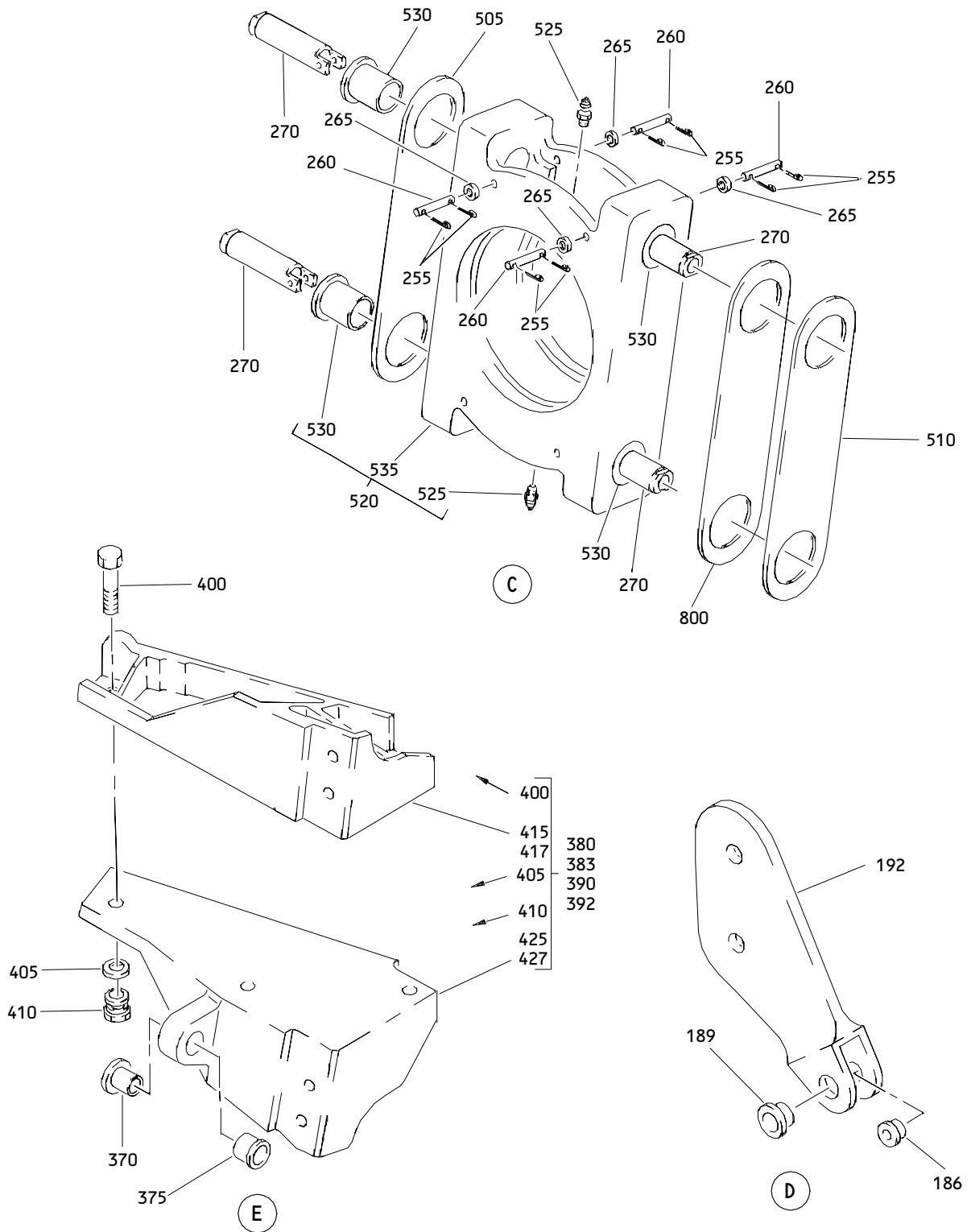
Forward Trunnion Bearing Support Assembly  
Figure 1 (Sheet 1)

**57-54-33**

ILLUSTRATED PARTS LIST  
01.1 Page 1027  
Sep 01/95



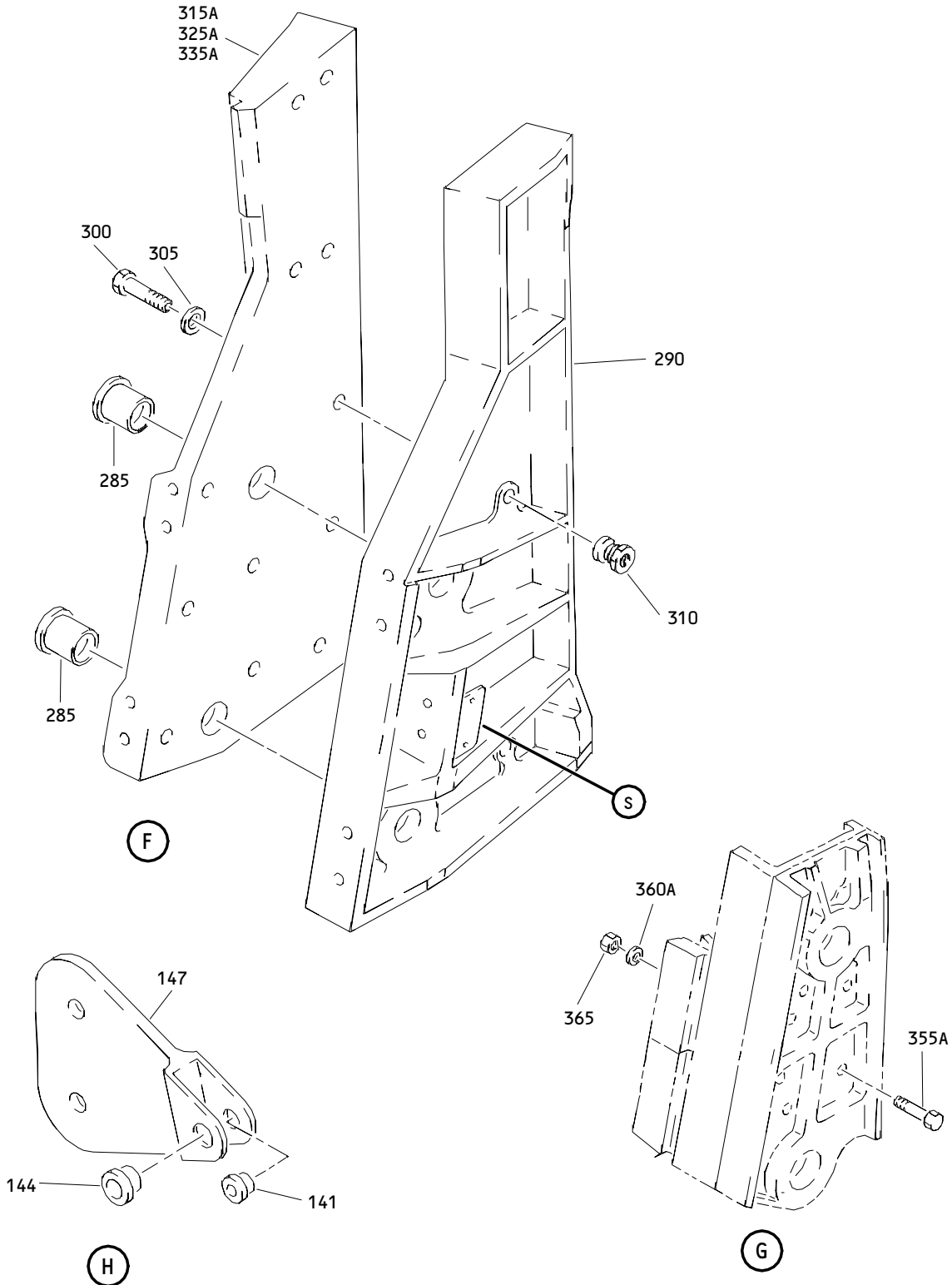




Forward Trunnion Bearing Support Assembly  
 Figure 1 (Sheet 3)

**57-54-33**

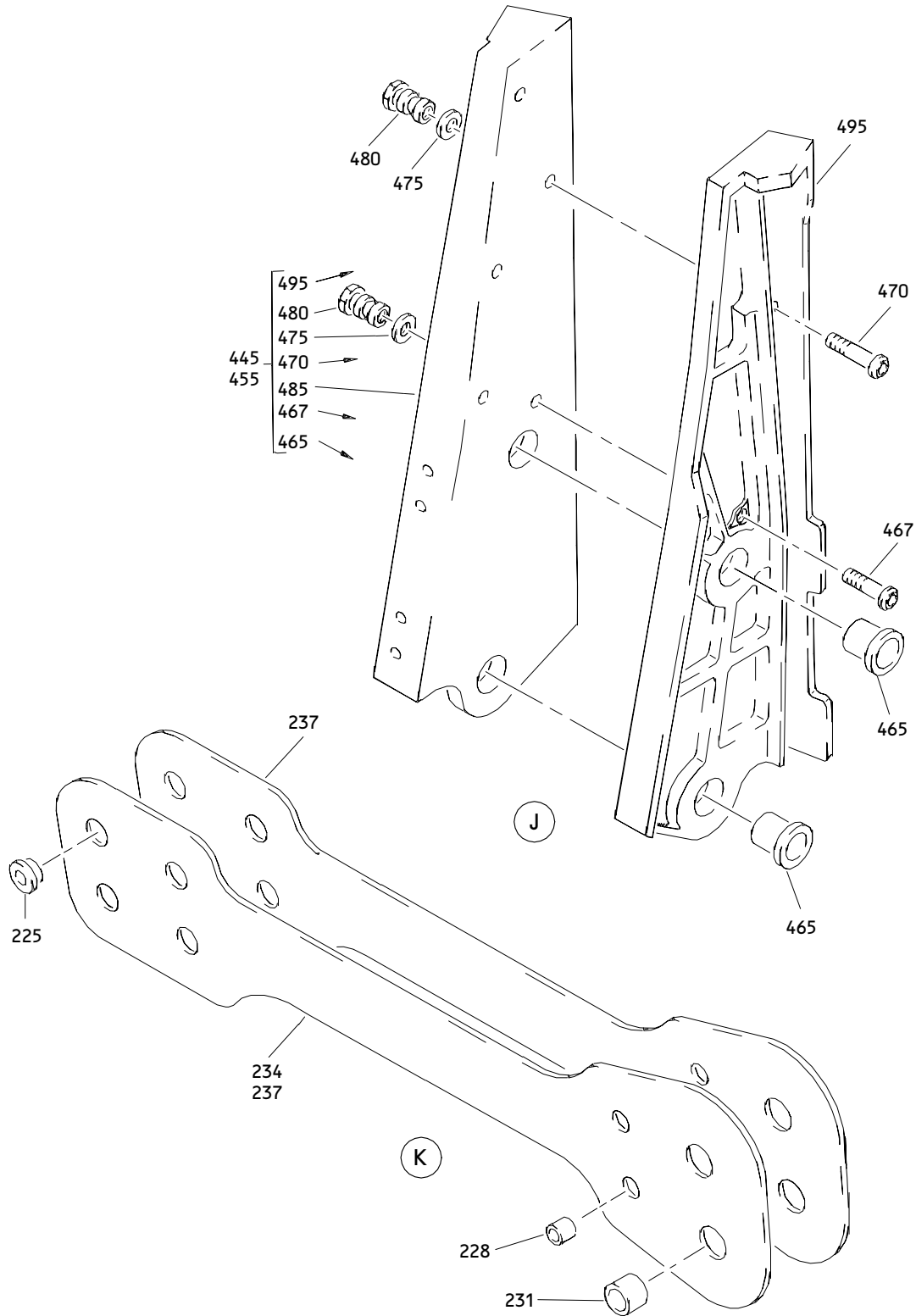
ILLUSTRATED PARTS LIST  
 01.1 Page 1029  
 Sep 01/95



Forward Trunnion Bearing Support Assembly  
 Figure 1 (Sheet 4)

**57-54-33**

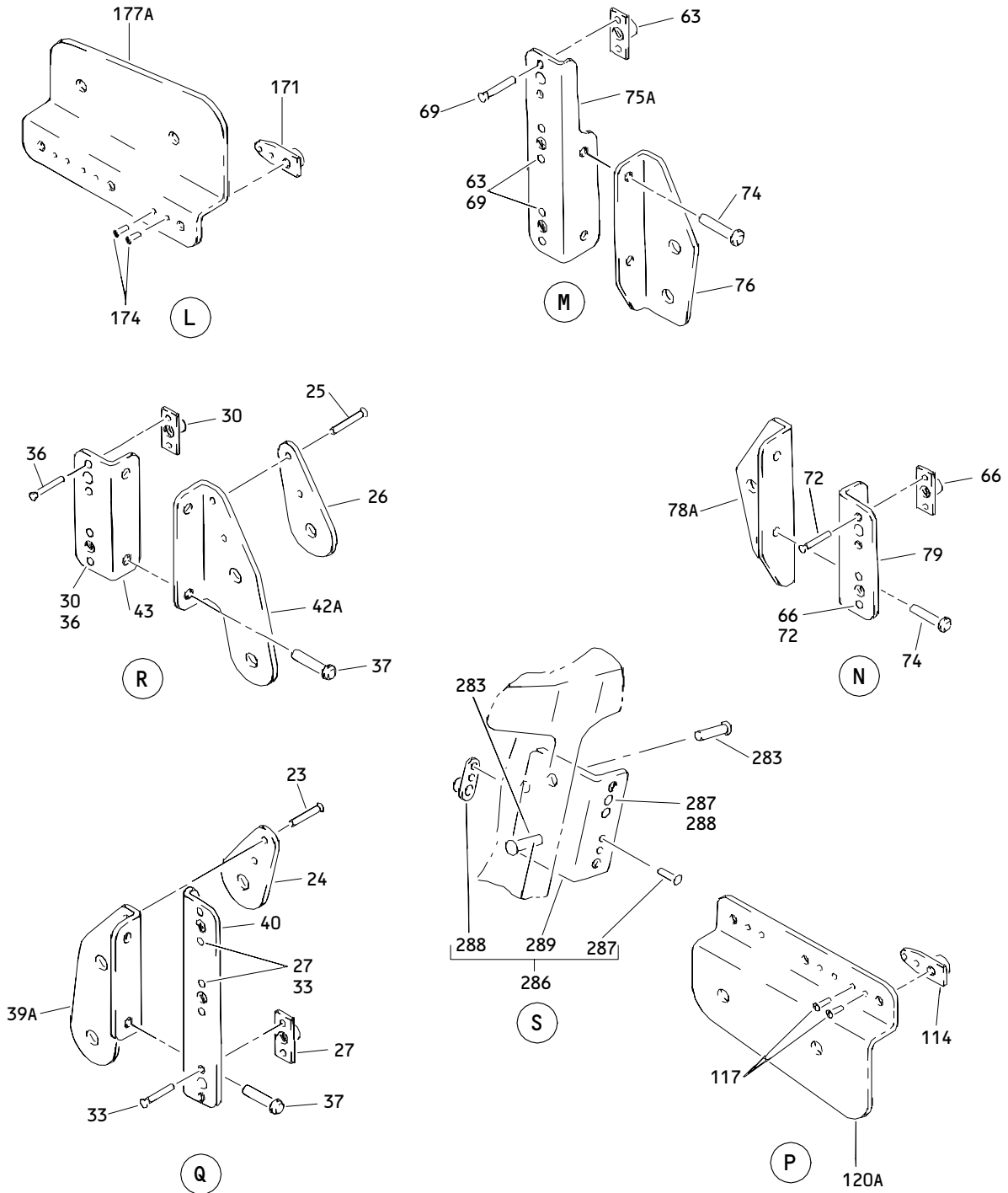
ILLUSTRATED PARTS LIST  
 01.1 Page 1030  
 Sep 01/95



Forward Trunnion Bearing Support Assembly  
 Figure 1 (Sheet 5)

**57-54-33**

ILLUSTRATED PARTS LIST  
 01.1 Page 1031  
 Sep 01/95



Forward Trunnion Bearing Support Assembly  
 Figure 1 (Sheet 6)

**57-54-33**

ILLUSTRATED PARTS LIST  
 01.1 Page 1032  
 Sep 01/95


**BOEING**  
 COMPONENT  
 MAINTENANCE MANUAL

FIG. & ITEM	PART NO.	AIRLINE PART NUMBER	NOMENCLATURE 1234567	EFF CODE	QTY PER ASSY
01- -1	112T1717-1		SUPPORT ASSY-FWD TRUNNION BRG (LH)	A	RF
-1B	112T1717-7		SUPPORT ASSY-FWD TRUNNION BRG (LH)	C	RF
-1C	112T1717-11		SUPPORT ASSY-FWD TRUNNION BRG (LH)	E	RF
-1D	112T1717-13		SUPPORT ASSY-FWD TRUNNION BRG (LH) (VARIABLE)	G	RF
-1E	112T1717-15		SUPPORT ASSY-FWD TRUNNION BRG (LH)	J	RF
-1F	112T1717-17		SUPPORT ASSY-FWD TRUNNION BRG (LH)	L	RF
-1G	112T1717-19		DELETED		
-1H	112T1717-21		DELETED		
-1J	112T1717-23		DELETED		
R -1K	112T1717-29		SUPPORT ASSY-FWD TRUNNION BRG (LH) (FOR DETAILS SEE FIG. 2)	U	RF
R -1L	112T1717-31		SUPPORT ASSY-FWD TRUNNION BRG (LH) (FOR DETAILS SEE FIG. 2)	V	RF
R -1M	112T1717-33		SUPPORT ASSY-FWD TRUNNION BRG (LH) (FOR DETAILS SEE FIG. 2)	W	RF
R -1N	112T1717-35		SUPPORT ASSY-FWD TRUNNION BRG (LH) (FOR DETAILS SEE FIG. 2)	N	RF
R -1P	112T1717-37		SUPPORT ASSY-FWD TRUNNION BRG (LH) (FOR DETAILS SEE FIG. 2)	P	RF
R -1Q	112T1717-39		SUPPORT ASSY-FWD TRUNNION BRG (LH) (FOR DETAILS SEE FIG. 2)	Q	RF
-3	112T1717-2		DELETED		
-5	112T1717-2		SUPPORT ASSY-FWD TRUNNION BRG (RH)	B	RF
-5B	112T1717-8		SUPPORT ASSY-FWD TRUNNION BRG (RH)	D	RF
-5C	112T1717-12		SUPPORT ASSY-FWD TRUNNION BRG (RH)	F	RF
-5D	112T1717-14		SUPPORT ASSY-FWD TRUNNION BRG (RH) (VARIABLE)	H	RF
-5E	112T1717-16		SUPPORT ASSY-FWD TRUNNION BRG (RH)	K	RF

57-54-33

ILLUSTRATED PARTS LIST

01.1

Page 1033

Sep 01/95

FIG. & ITEM	PART NO.	AIRLINE PART NUMBER	NOMENCLATURE 1234567	EFF CODE	QTY PER ASSY
01- -5F	112T1717-18		SUPPORT ASSY-FWD TRUNNION BRG (RH)	M	RF
-5G	112T1717-20		DELETED		
-5H	112T1717-22		DELETED		
-5J	112T1717-24		DELETED		
R -5K	112T1717-30		SUPPORT ASSY-FWD TRUNNION BRG (RH) (FOR DETAILS SEE FIG. 2)	X	RF
R -5L	112T1717-32		SUPPORT ASSY-FWD TRUNNION BRG (RH) (FOR DETAILS SEE FIG. 2)	Y	RF
R -5M	112T1717-34		SUPPORT ASSY-FWD TRUNNION BRG (RH) (FOR DETAILS SEE FIG. 2)	Z	RF
R -5N	112T1717-36		SUPPORT ASSY-FWD TRUNNION BRG (RH) (FOR DETAILS SEE FIG. 2)	R	RF
R -5P	112T1717-38		SUPPORT ASSY-FWD TRUNNION BRG (RH) (FOR DETAILS SEE FIG. 2)	S	RF
R -5Q	112T1717-40		SUPPORT ASSY-FWD TRUNNION BRG (RH) (FOR DETAILS SEE FIG. 2)	T	RF
6A	272T1441-13		.BRACKET ASSY	A,C,E	1
-6B	272T1441-23		.BRACKET ASSY	G,J,L	1
9A	272T1441-14		.BRACKET ASSY	B,D,F	1
-9B	272T1441-24		.BRACKET ASSY	H,K,M	1
12A	BACB30NM10K20		ATTACHING PARTS .BOLT	A-F	2
-12B	BACB30LE10-22		.BOLT	G-K	2
-12C	BACB30US10K22		DELETED		
-12D	BACB30US10K23		.BOLT	L,M	2
15	BACW10BN10AC		.WASHER- (V10630) (SPEC BACW10BN10AC)	A-D	2
-15A	BACW10BP10C		.WASHER- (V10630) (SPEC BACW10BP10C)	E-M	2
18	AN960C1016L		.WASHER	A-D	2
-18A	BACW10BP10P		.WASHER- (V10630) (SPEC BACW10BP10P)	E-M	2
21	NAS1805-10		.NUT	A-F	2

57-54-33

 ILLUSTRATED PARTS LIST  
 01.1 Page 1034  
 Sep 01/95


**BOEING**  
 COMPONENT  
 MAINTENANCE MANUAL

FIG. & ITEM	PART NO.	AIRLINE PART NUMBER	NOMENCLATURE 1234567	EFF CODE	QTY PER ASSY
01- -21A	BMNN10HR10		.NUT- (V97928) (SPEC BACN10HR10) (OPT H9610 (V15653)) (OPT RMLH2210 (V72962)) (OPT 678321018 (V56878))	G-K	2
-21B	BMN5024CWD3-10		.NUT- (V97928) (SPEC BACN10HR10CD) (OPT H51560-10 (V15653)) (OPT 102LH9031-10 (V72962)) (OPT 67832CD1018 (V56878)) (OPT BH00303CM10 (V27238)) (OPT CR603010 (V62554)) (OPT SL7108C10 (V11815)) (OPT VCU0005D10 (V06710)) (OPT BMN10HRCWD3-10 (V97928)) -----*-----	L,M	2
23	BACR15BA3AD		..RIVET- (SIZE DETERMINE ON INST)	A,C,E ,G,J, L	2
24	272T1441-9		..SPACER	A,C,E ,G,J, L	1
25	BACR15BA3AD		..RIVET- (SIZE DETERMINE ON INST)	B,D,F ,H,K, M	2
26	272T1441-9		..SPACER	B,D,F ,H,K, M	1

57-54-33

ILLUSTRATED PARTS LIST

01.1

Page 1035

Sep 01/95

FIG. & ITEM	PART NO.	AIRLINE PART NUMBER	NOMENCLATURE 1234567	EFF CODE	QTY PER ASSY
01-27	BRFM20A3		..NUTPLATE- (V52828) (SPEC BACN10JN3) (OPT MF1000-3BAC (V15653)) (OPT NS103218-02 (V80539)) (OPT RMF9201M3 (V72962)) (OPT VN252A02 (V92215)) (OPT MF1000-3BAC (V15653)) (OPT MF53049-3 (V15653))	A,C,E ,G,J, L	3
30	BRFM20A3		..NUTPLATE- (V52828) (SPEC BACN10JN3) (OPT MF1000-3BAC (V15653)) (OPT NS103218-02 (V80539)) (OPT RMF9201M3 (V72962)) (OPT VN252A02 (V92215)) (OPT MF1000-3BAC (V15653)) (OPT MF53049-3 (V15653))	B,D,F ,H,K, M	2
33	BACR15BA3AD		ATTACHING PARTS ..RIVET- (SIZE DETERMINE ON INST)	A,C,E ,G,J, L	6
36	BACR15BA3AD		..RIVET- (SIZE DETERMINE ON INST)	B,D,F ,H,K, M	4
37	BACR15FT5AD		-----*----- ..RIVET- (SIZE DETERMINE ON INST)		2
39A	272T1441-17		..BRACKET	A,C,E ,G,J, L	1

57-54-33

 ILLUSTRATED PARTS LIST  
 01.1 Page 1036  
 Sep 01/95




**BOEING**  
 COMPONENT  
 MAINTENANCE MANUAL

FIG. & ITEM	PART NO.	AIRLINE PART NUMBER	NOMENCLATURE 1234567	EFF CODE	QTY PER ASSY
01-40	272T1441-20		. .BRACKET	A,C,E ,G,J, L	1
42A	272T1441-18		. .BRACKET	B,D,F ,H,K, M	1
43	272T1441-10		. .BRACKET	B,D,F ,H,K, M	1
45A	272T1441-11		.BRACKET ASSY	A,C,E	1
-45B	272T1441-21		.BRACKET ASSY	G,J,L	1
48A	272T1441-12		.BRACKET ASSY	B,D,F	1
-48B	272T1441-22		.BRACKET ASSY	H,K,M	1
51	BACB30NR7K19		ATTACHING PARTS .BOLT	A-F	2
-52	BACB30LE7-21		.BOLT	G-K	2
-52A	BACB30US7K19		DELETED		
-52B	BACB30US7K23		.BOLT- (V06725) (SPEC BACB30US7K23) (OPT BACB30US7K23 (V08524)) (OPT BACB30US7K23 (V50945)) (OPT BACB30US7K23 (V27624)) (OPT BACB30US7K23 (V56878)) (OPT BACB30US7K23 (V06710)) (OPT BACB30US7K23 (V92215))	L,M	2

57-54-33

 ILLUSTRATED PARTS LIST  
 01.1 Page 1037  
 Sep 01/95

FIG. & ITEM	PART NO.	AIRLINE PART NUMBER	NOMENCLATURE 1234567	EFF CODE	QTY PER ASSY
01-54	BACW10BN7AC		.WASHER- (V10630) (SPEC BACW10BN7AC)	A-D	2
-56	BACW10BP7C		.WASHER- (V10630) (SPEC BACW10BP7C)	E-M	2
57	AN960C716L		.WASHER	A-D	2
-59	BACW10BP7P		.WASHER- (V10630) (SPEC BACW10BP7P)	E-M	2
60	NAS1805-7		.NUT	A-F	2
-62A	BH003027		.NUT- (V27238) (SPEC BACN10HR7) (OPT BMNN10HR7 (V97928)) (OPT CR59067 (V62554)) (OPT H967 (V15653)) (OPT RMLH227 (V72962)) (OPT VAL280097 (V06710)) (OPT 678327 (V56878)) (OPT H96-7 (V15653)) (OPT RMLH22-7 (V72962)) (OPT 67832-720 (V56878)) (OPT BMNN10HR7 (V97928)) (OPT BH00302-7 (V27238))	G-K	2

# 57-54-33

 ILLUSTRATED PARTS LIST  
 01.1 Page 1038  
 Sep 01/95


**BOEING**  
 COMPONENT  
 MAINTENANCE MANUAL

FIG. & ITEM	PART NO.	AIRLINE PART NUMBER	NOMENCLATURE	EFF CODE	QTY PER ASSY
01- -62B	H51560-7		1234567 .NUT- (V15653) (SPEC BACN10HR7CD) (OPT 67832CD720 (V56878)) (OPT 102LH9031-7 (V72962)) (OPT BH00303CM7 (V27238)) (OPT BMN5024CWD37 (V97928)) (OPT CR60307 (V62554)) (OPT SL7108C7 (V11815)) (OPT SL7108C7 (V11815)) (OPT VCU0005D7 (V06710)) (OPT 102LH90317 (V72962)) (OPT 67832CD7 (V56878)) -----*-----	L,M	2
63	BRFM20A3		.NUTPLATE- (V52828) (SPEC BACN10JN3) (OPT MF1000-3BAC (V15653)) (OPT NS103218-02 (V80539)) (OPT RMF9201M3 (V72962)) (OPT VN252A02 (V92215)) (OPT MF1000-3BAC (V15653)) (OPT MF53049-3 (V15653))	A,C,E ,G,J, L	3

57-54-33

ILLUSTRATED PARTS LIST

01.1

Page 1039

Sep 01/95

FIG. & ITEM	PART NO.	AIRLINE PART NUMBER	NOMENCLATURE 1234567	EFF CODE	QTY PER ASSY
01-66	BRFM20A3		..NUTPLATE- (V52828) (SPEC BACN10JN3) (OPT MF1000-3BAC (V15653)) (OPT NS103218-02 (V80539)) (OPT RMF9201M3 (V72962)) (OPT VN252A02 (V92215)) (OPT MF1000-3BAC (V15653)) (OPT MF53049-3 (V15653)) ATTACHING PARTS	B,D,F ,H,K, M	2
69	BACR15BA3AD		..RIVET- (SIZE DETERMINE ON INST)	A,C,E ,G,J, L	6
72	BACR15BA3AD		..RIVET- (SIZE DETERMINE ON INST)	B,D,F ,H,K, M	4
74	BACR15FT5AD		-----*----- ..RIVET- (SIZE DETERMINE ON INST)		2
75A	272T1441-15		..BRACKET	A,C,E ,G,J, L	1
76	272T1441-19		..BRACKET	A,C,E ,G,J, L	1
78A	272T1441-16		..BRACKET	B,D,F ,H,K, M	1

**57-54-33**

 ILLUSTRATED PARTS LIST  
 01.1 Page 1040  
 Sep 01/95


**BOEING**  
 COMPONENT  
 MAINTENANCE MANUAL

FIG. & ITEM	PART NO.	AIRLINE PART NUMBER	NOMENCLATURE 1234567	EFF CODE	QTY PER ASSY
01-79	272T1441-10		. .BRACKET	B,D,F ,H,K, M	1
81	287T6115-1		.BRACKET ASSY- (OPT ITEM 81A)	A,C,E ,G,J, L	1
R -81A	287T6115-4		.BRACKET ASSY- (OPT ITEM 81)	A,C,E ,G,J, L	1
-84	287T6115-2		.BRACKET ASSY- (OPT ITEM 84A)	B,D,F ,H,K, M	1
R -84A	287T6115-3		.BRACKET ASSY- (OPT ITEM 84)	B,D,F ,H,K, M	1
87	287T6118-1		ATTACHING PARTS .SHIM		1
90	BACB30NR6K17		DELETED		
R 90A	BACB30NR6K18		.BOLT	A-F	1
-92	BACB30LE6-19		.BOLT	G-K	1
-92A	BACB30US6K22		DELETED		
-92B	BACB30US6K19		.BOLT- (V06725) (SPEC BACB30US6K19) (OPT BACB30US6K19 (V08524)) (OPT BACB30US6K19 (V50945)) (OPT BACB30US6K19 (V27624)) (OPT BACB30US6K19 (V56878)) (OPT BACB30US6K19 (V06710)) (OPT BACB30US6K19 (V92215))	L,M	1

57-54-33

 ILLUSTRATED PARTS LIST  
 01.1 Page 1041  
 Sep 01/95

FIG. & ITEM	PART NO.	AIRLINE PART NUMBER	NOMENCLATURE 1234567	EFF CODE	QTY PER ASSY
01-					
93A	BACB30NM10K18		.BOLT	A-F	1
-95	BACB30LE10-20		.BOLT	G-K	1
-95A	BACB30US10K22		DELETED		
-95B	BACB30US10K20		.BOLT- (V06725) (SPEC BACB30US10K20) (OPT BACB30US10K20 (V08524)) (OPT BACB30US10K20 (V50945)) (OPT BACB30US10K20 (V27624)) (OPT BACB30US10K20 (V56878)) (OPT BACB30US10K20 (V06710)) (OPT BACB30US10K20 (V92215))	L,M	1
96	BACW10BN6AC		.WASHER- (V10630) (SPEC BACW10BN6AC)	A-D	1
-98	BACW10BP6C		.WASHER- (V10630) (SPEC BACW10BP6C)	E-M	1
99	BACW10BN10AC		.WASHER- (V10630) (SPEC BACW10BN10AC)	A-D	1
-101	BACW10BP10C		.WASHER- (V10630) (SPEC BACW10BP10C)	E-M	1
102	AN960C616L		.WASHER	A-D	1
-103	BACW10BP6P		.WASHER- (V10630) (SPEC BACW10BP6P)	E-M	1
105	AN960C1016L		.WASHER	A-D	1
-107	BACW10BP10P		.WASHER- (V10630) (SPEC BACW10BP10P)	E-M	1
108	NAS1805-6		.NUT	A-F	1

57-54-33

 ILLUSTRATED PARTS LIST  
 01.1 Page 1042  
 Sep 01/95

**BOEING**  
 COMPONENT  
 MAINTENANCE MANUAL

FIG. & ITEM	PART NO.	AIRLINE PART NUMBER	NOMENCLATURE	EFF CODE	QTY PER ASSY
01-110	BH003026		1234567 .NUT- (V27238) (SPEC BACN10HR6) (OPT BMNN10HR6 (V97928)) (OPT CR59066 (V62554)) (OPT H966 (V15653)) (OPT RMLH226 (V72962)) (OPT VAL280096 (V06710)) (OPT 678326 (V56878)) (OPT H96-6 (V15653)) (OPT RMLH22-6 (V72962)) (OPT SL7058S624 (V11815)) (OPT 67832-624 (V56878)) (OPT BMNN10HR6 (V97928)) (OPT BH00302-6 (V27238))	G-K	1

**57-54-33**

ILLUSTRATED PARTS LIST  
 01.1 Page 1043  
 Sep 01/95

FIG. & ITEM	PART NO.	AIRLINE PART NUMBER	NOMENCLATURE 1234567	EFF CODE	QTY PER ASSY
01- -110A	H51560-6		.NUT- (V15653) (SPEC BACN10HR6CD) (OPT 67832CD624 (V56878)) (OPT BMN5024CWD3-6 (V97928)) (OPT 102LH9031-6 (V72962)) (OPT BH00303CM6 (V27238)) (OPT SL7108C624 (V11815)) (OPT BH00303CM6 (V27238)) (OPT BMN5024CWD36 (V97928)) (OPT CR60306 (V62554)) (OPT H51560 (V15653)) (OPT SL7108C6 (V11815)) (OPT VCU0005D (V06710)) (OPT 102LH90316 (V72962)) (OPT 67832CD6 (V56878)) (OPT BH003026CD (V27238)) (OPT BMNN10HR6CD (V97928)) (OPT CR59066CD (V62554)) (OPT H966CD (V15653)) (OPT RMLH22 (V72962)) (OPT VAL280096CD (V06710)) (OPT 678326CD (V56878)) (OPT BMN10HRCWD3-6 (V97928))	L,M	1

# 57-54-33

 ILLUSTRATED PARTS LIST  
 01.1 Page 1044  
 Sep 01/95




**BOEING**  
 COMPONENT  
 MAINTENANCE MANUAL

FIG. & ITEM	PART NO.	AIRLINE PART NUMBER	NOMENCLATURE 1234567	EFF CODE	QTY PER ASSY
01-					
111	NAS1805-10		.NUT	A-F	1
-113	BMNN10HR10		.NUT- (V97928) (SPEC BACN10HR10) (OPT H9610 (V15653)) (OPT RMLH2210 (V72962)) (OPT 678321018 (V56878))	G-K	1
-113A	BMN5024CWD3-10		.NUT- (V97928) (SPEC BACN10HR10CD) (OPT H51560-10 (V15653)) (OPT 102LH9031-10 (V72962)) (OPT 67832CD1018 (V56878)) (OPT BH00303CM10 (V27238)) (OPT CR603010 (V62554)) (OPT SL7108C10 (V11815)) (OPT VCU0005D10 (V06710)) (OPT BMN10HRCWD3-10 (V97928))	L,M	1
114	T8101S3SK		-----*----- ..NUTPLATE- (V11815) (SPEC BACN10KA3C) (OPT NS103228-02 (V80539)) ATTACHING PARTS		3
117	BACR15BA3AD		..RIVET- (SIZE DETERMINE ON INST)		6
120A	287T6115-5		-----*----- ..BRACKET- (USED ON ITEM 81)	A,C,E ,G,J, L	1
R -120B	287T6115-8		..BRACKET- (USED ON ITEM 81A)	A,C,E ,G,J, L	1

57-54-33

ILLUSTRATED PARTS LIST

01.1

Page 1045

Sep 01/95

FIG. & ITEM	PART NO.	AIRLINE PART NUMBER	NOMENCLATURE 1234567	EFF CODE	QTY PER ASSY
01- -123A	287T6115-6		..BRACKET- (USED ON ITEM 84)	B,D,F ,H,K, M	1
R -123B	287T6115-7		..BRACKET- (USED ON ITEM 84A)	B,D,F ,H,K, M	1
126	113T1893-2		.FITTING ASSY ATTACHING PARTS		1
129A	BACB30NM10K17		.BOLT	A-F	1
-131	BACB30LE10-19		.BOLT	G-K	1
-131A	BACB30US10K21		DELETED		
-131B	BACB30US10K19		.BOLT- (V06725) (SPEC BACB30US10K19) (OPT BACB30US10K19 (V08524)) (OPT BACB30US10K19 (V50945)) (OPT BACB30US10K19 (V27624)) (OPT BACB30US10K19 (V56878)) (OPT BACB30US10K19 (V06710)) (OPT BACB30US10K19 (V92215))	L,M	1
132	BACW10BN10AC		.WASHER- (V10630) (SPEC BACW10BN10AC)	A-D	1
-133	BACW10BP10C		.WASHER- (V10630) (SPEC BACW10BP10C)	E-M	1

**57-54-33**

 ILLUSTRATED PARTS LIST  
 01.1 Page 1046  
 Sep 01/95

**BOEING**  
 COMPONENT  
 MAINTENANCE MANUAL

FIG. & ITEM	PART NO.	AIRLINE PART NUMBER	NOMENCLATURE 1234567	EFF CODE	QTY PER ASSY
01- 135 -137	AN960C1016L BACW10BP10P		.WASHER .WASHER- (V10630) (SPEC BACW10BP10P)	A-D E-M	1 1
138 -140	NAS1805-10 BMNN10HR10		.NUT .NUT- (V97928) (SPEC BACN10HR10) (OPT H9610 (V15653)) (OPT RMLH2210 (V72962)) (OPT 678321018 (V56878))	A-F G-K	1 1
-140A	BMN5024CWD3-10		.NUT- (V97928) (SPEC BACN10HR10CD) (OPT H51560-10 (V15653)) (OPT 102LH9031-10 (V72962)) (OPT 67832CD1018 (V56878)) (OPT BH00303CM10 (V27238)) (OPT CR603010 (V62554)) (OPT SL7108C10 (V11815)) (OPT VCU0005D10 (V06710)) (OPT BMN10HRCWD3-10 (V97928)) -----*	L,M	1

**57-54-33**

ILLUSTRATED PARTS LIST  
 01.1 Page 1047  
 Sep 01/95

FIG. & ITEM	PART NO.	AIRLINE PART NUMBER	NOMENCLATURE 1234567	EFF CODE	QTY PER ASSY
01-					
141	BACB28AP04P011		..BUSHING		1
144	BACB28AM06B011A		..BUSHING		1
147	113T1893-4		..FITTING		1
150	287T6115-3		.BRACKET ASSY- (OPT ITEM 150A)	A,C,E ,G,J, L	1
R -150A	287T6115-2		.BRACKET ASSY- (OPT ITEM 150)	A,C,E ,G,J, L	1
-153	287T6115-4		.BRACKET ASSY- (OPT ITEM 153A)	B,D,F ,H,K, M	1
R -153A	287T6115-1		.BRACKET ASSY- (OPT ITEM 153)	B,D,F ,H,K, M	1
			ATTACHING PARTS		
156	287T6118-1		.SHIM		1
159	BACB30NR6K17		DELETED		
R 159A	BACB30NR6K18		.BOLT	A-F	1
-160	BACB30LE6-19		.BOLT	G-K	1
-160A	BACB30US6K22		DELETED		
-160B	BACB30US6K19		.BOLT- (V06725) (SPEC BACB30US6K19) (OPT BACB30US6K19 (V08524)) (OPT BACB30US6K19 (V50945)) (OPT BACB30US6K19 (V27624)) (OPT BACB30US6K19 (V56878)) (OPT BACB30US6K19 (V06710)) (OPT BACB30US6K19 (V92215))	L,M	1

57-54-33

 ILLUSTRATED PARTS LIST  
 01.1 Page 1048  
 Sep 01/95


**BOEING**  
 COMPONENT  
 MAINTENANCE MANUAL

FIG. & ITEM	PART NO.	AIRLINE PART NUMBER	NOMENCLATURE 1234567	EFF CODE	QTY PER ASSY
01-162	BACW10BN6AC		.WASHER- (V10630) (SPEC BACW10BN6AC)	A-D	1
-163	BACW10BP6C		.WASHER- (V10630) (SPEC BACW10BP6C)	E-M	1
165	AN960C616L		.WASHER	A-D	1
-167	BACW10BP6P		.WASHER- (V10630) (SPEC BACW10BP6P)	E-M	1
168	NAS1805-6		.NUT	A-F	1
-170	BACW10HR6		.NUT	G-K	1
-170A	BACW10HR6CD		.NUT	L,M	1
			-----*-----		
171	T8101S3SK		..NUTPLATE- (V11815) (SPEC BACN10KA3C) (OPT NS103228-02 (V80539))		3
			ATTACHING PARTS		
174	BACR15BA3AD		..RIVET- (SIZE DETERMINE ON INST)		6
			-----*-----		
177A	287T6115-7		..BRACKET- (USED ON ITEM 150)	A,C,E ,G,J, L	1
R -177B	287T6115-6		..BRACKET- (USED ON ITEM 150A)	A,C,E ,G,J, L	1
-180A	287T6115-8		..BRACKET- (USED ON ITEM 153)	B,D,F ,H,K, M	1
R -180B	287T6115-5		..BRACKET- (USED ON ITEM 153A)	B,D,F ,H,K, M	1

57-54-33

 ILLUSTRATED PARTS LIST  
 01.1 Page 1049  
 Sep 01/95

FIG. & ITEM	PART NO.	AIRLINE PART NUMBER	NOMENCLATURE 1234567	EFF CODE	QTY PER ASSY
01-					
183	113T1893-1		.FITTING ASSY		1
186	BACB28AP04P011		..BUSHING		1
189	BACB28AM06B011A		..BUSHING		1
192	113T1893-3		..FITTING		1
195	112T1045-5		.BONDED ASSY-STRAP FWD	A-F	1
-197	112T1045-7		.BONDED ASSY-STRAP FWD	G-M	1
198	112T1045-6		.BONDED ASSY-STRAP FWD	A-F	1
-200	112T1045-8		.BONDED ASSY-STRAP FWD	G-M	1
			ATTACHING PARTS		
201	BACB30NR6K13		.BOLT	A-F	2
-203	BACB30LE6-15		.BOLT	G-K	2
-203A	BACB30US6K20		DELETED		
-203B	BACB30US6K15		.BOLT-	L,M	2
			(V06725)		
			(SPEC BACB30US6K15)		
			(OPT BACB30US6K15		
			(V08524))		
			(OPT BACB30US6K15		
			(V50945))		
			(OPT BACB30US6K15		
			(V27624))		
			(OPT BACB30US6K15		
			(V56878))		
			(OPT BACB30US6K15		
			(V06710))		
			(OPT BACB30US6K15		
			(V92215))		
204	BACW10BN6AC		.WASHER-	A-D	2
			(V10630)		
			(SPEC BACW10BN6AC)		
-206	BACW10BP6C		.WASHER-	E-M	2
			(V10630)		
			(SPEC BACW10BP6C)		
207A	AN960C616L		.WASHER	A-D	2
-208	BACW10BP6P		.WASHER-	E-M	2
			(V10630)		
			(SPEC BACW10BP6P)		
210	NAS1805-6		.NUT	A-F	2

57-54-33

ILLUSTRATED PARTS LIST

01.1

Page 1050

Sep 01/95


**BOEING**  
 COMPONENT  
 MAINTENANCE MANUAL

FIG. & ITEM	PART NO.	AIRLINE PART NUMBER	NOMENCLATURE 1234567	EFF CODE	QTY PER ASSY
01- -211	BH003026		.NUT- (V27238) (SPEC BACN10HR6) (OPT BMNN10HR6 (V97928)) (OPT CR59066 (V62554)) (OPT H966 (V15653)) (OPT RMLH226 (V72962)) (OPT VAL280096 (V06710)) (OPT 678326 (V56878)) (OPT H96-6 (V15653)) (OPT RMLH22-6 (V72962)) (OPT SL7058S624 (V11815)) (OPT 67832-624 (V56878)) (OPT BMNN10HR6 (V97928)) (OPT BH00302-6 (V27238))	G-K	2

# 57-54-33

ILLUSTRATED PARTS LIST

01.1

Page 1051

Sep 01/95

FIG. & ITEM	PART NO.	AIRLINE PART NUMBER	NOMENCLATURE 1234567	EFF CODE	QTY PER ASSY
01- -211A	H51560-6		.NUT- (V15653) (SPEC BACN10HR6CD) (OPT 67832CD624 (V56878)) (OPT BMN5024CWD3-6 (V97928)) (OPT 102LH9031-6 (V72962)) (OPT BH00303CM6 (V27238)) (OPT SL7108C624 (V11815)) (OPT BH00303CM6 (V27238)) (OPT BMN5024CWD36 (V97928)) (OPT CR60306 (V62554)) (OPT H51560 (V15653)) (OPT SL7108C6 (V11815)) (OPT VCU0005D (V06710)) (OPT 102LH90316 (V72962)) (OPT 67832CD6 (V56878)) (OPT BH003026CD (V27238)) (OPT BMNN10HR6CD (V97928)) (OPT CR59066CD (V62554)) (OPT H966CD (V15653)) (OPT RMLH22 (V72962)) (OPT VAL280096CD (V06710)) (OPT 678326CD (V56878)) (OPT BMN10HRCWD3-6 (V97928))	L,M	2

# 57-54-33

 ILLUSTRATED PARTS LIST  
 01.1 Page 1052  
 Sep 01/95




**BOEING**  
 COMPONENT  
 MAINTENANCE MANUAL

FIG. & ITEM	PART NO.	AIRLINE PART NUMBER	NOMENCLATURE 1234567	EFF CODE	QTY PER ASSY
01-					
213	BACB30NR7K17		.BOLT	A-F	6
-213A	BACB30LE7-19		.BOLT	G-K	6
-213B	BACB30US7K18		DELETED		
-213C	BACB30US7K21		.BOLT- (V06725) (SPEC BACB30US7K21) (OPT BACB30US7K21 (V08524)) (OPT BACB30US7K21 (V50945)) (OPT BACB30US7K21 (V27624)) (OPT BACB30US7K21 (V56878)) (OPT BACB30US7K21 (V06710)) (OPT BACB30US7K21 (V92215))	L,M	6
214	BACW10BN7AC		.WASHER- (V10630) (SPEC BACW10BN7AC)	A-D	6
-215	BACW10BP7C		.WASHER- (V10630) (SPEC BACW10BP7C)	G-M	6
216A	AN960C716L		.WASHER	A-D	6
-217	BACW10BP7P		.WASHER- (V10630) (SPEC BACW10BP7P)	E-M	6
219	NAS1805-7		.NUT	A-F	6

57-54-33

 ILLUSTRATED PARTS LIST  
 01.1 Page 1053  
 Sep 01/95

FIG. & ITEM	PART NO.	AIRLINE PART NUMBER	NOMENCLATURE 1234567	EFF CODE	QTY PER ASSY
01- -220	BH003027		.NUT- (V27238) (SPEC BACN10HR7) (OPT BMNN10HR7 (V97928)) (OPT CR59067 (V62554)) (OPT H967 (V15653)) (OPT RMLH227 (V72962)) (OPT VAL280097 (V06710)) (OPT 678327 (V56878)) (OPT H96-7 (V15653)) (OPT RMLH22-7 (V72962)) (OPT 67832-720 (V56878)) (OPT BMNN10HR7 (V97928)) (OPT BH00302-7 (V27238))	G-K	6

**57-54-33**

 ILLUSTRATED PARTS LIST  
 01.1 Page 1054  
 Sep 01/95

**BOEING**  
 COMPONENT  
 MAINTENANCE MANUAL

FIG. & ITEM	PART NO.	AIRLINE PART NUMBER	NOMENCLATURE	EFF CODE	QTY PER ASSY
			1234567		
01- -220A	H51560-7		.NUT- (V15653) (SPEC BACN10HR7CD) (OPT 67832CD720 (V56878)) (OPT 102LH9031-7 (V72962)) (OPT BH00303CM7 (V27238)) (OPT BMN5024CWD37 (V97928)) (OPT CR60307 (V62554)) (OPT SL7108C7 (V11815)) (OPT SL7108C7 (V11815)) (OPT VCU0005D7 (V06710)) (OPT 102LH90317 (V72962)) (OPT 67832CD7 (V56878))	L,M	6
222	BACS40R20B100F		.SHIM -----*		1
225	BACB28W7F024		..BUSHING	A-F	4
-226	BACB28W7F032		..BUSHING	G-M	4
228	BACB28U6F024		..BUSHING	A-F	2
-229	BACB28U6F032		..BUSHING	G-T	2
231	BACB28U10F024		..BUSHING	A-F	2
-232	BACB28U10F032		..BUSHING	G-M	2
234	112T1045-3		..BONDED ASSY	A-F	1
-236	112T1045-9		..BONDED ASSY	G-M	1

**57-54-33**

ILLUSTRATED PARTS LIST  
 01.1 Page 1055  
 Sep 01/95

FIG. & ITEM	PART NO.	AIRLINE PART NUMBER	NOMENCLATURE 1234567	EFF CODE	QTY PER ASSY
01-					
237	112T1220-1		...STRAP	A-F	2
-238	112T1220-2		...STRAP	G-M	2
239	BACS40R32D035F		.SHIM	L,M	1
239G	BACS40R33D035F		.SHIM	L,M	1
240	BACB28U6B035		.BUSHING	A-K	4
-240A	BACB28U6B048		.BUSHING	L,M	4
243	BACB28U10B035		.BUSHING	A-K	4
-243A	BACB28U10B048		.BUSHING	L,M	4
245	BACB28U7B067		DELETED		
250	BACB28U7B064		DELETED		
253	BACB28U7B080		DELETED		
R 253A	BACB28U7B088		.BUSHING	L,M	8
R -253B	BACB28U7B078		.BUSHING	A-K	8
255	MS24665-153		.PIN-COTTER		16
260	112T1103-1		.PIN-RETAINING		8
265	AN960C416L		.WASHER		8
R 270	112T1035-1		.PIN-FUSE (PRE SB 57-0047) (OPT ITEM 270A)	A-F	4
-270A	112T1035-2		.PIN-FUSE (PRE SB 57-0047) (OPT ITEM 270)	A-F	4
-270B	112T1035-2		DELETED		
-270C	112T1035-3		.PIN-FUSE (POST SB 57-0047)	A-F P,S	4
-272	112T1078-1		.PIN-FUSE (PRE SB 57-0047)	G-K	4
-272A	112T1078-2		.PIN-FUSE (PRE SB 57-0047)	L,M	4

# 57-54-33

 ILLUSTRATED PARTS LIST  
 01.1 Page 1056  
 Sep 01/95


**BOEING**  
 COMPONENT  
 MAINTENANCE MANUAL

FIG. & ITEM	PART NO.	AIRLINE PART NUMBER	NOMENCLATURE 1234567	EFF CODE	QTY PER ASSY
01- -272B	112T1078-3		.PIN-FUSE (POST SB 57-0047)	G-K,Q	4
-272C	112T1078-4		.PIN-FUSE (POST SB 57-0047)	L-N,R	4
-273 275	BACS40R033D035F 112T1711-7		DELETED .BONDED ASSY-INBD SPRT	A,C,E ,G,J	1
275A	112T1711-13		.BONDED ASSY-INBD SPRT	L	1
-275B	112T1711-19		DELETED		
-275C	112T1711-13		DELETED		
-280	112T1711-8		.BONDED ASSY-INBD SPRT	B,D,F ,H,K	1
280A	112T1711-14		.BONDED ASSY-INBD SPRT	M	1
-280B	112T1711-20		DELETED		
-280C	112T1711-14		DELETED		
283	BACR15FT8AD		DELETED		
R 283A	BACR15FT8AD15		..RIVET	A-M	2
285	112T1038-1		..BUSHING		2
286	287T0020-25		..BRACKET ASSY		1
287	BACR15BA3AD		...RIVET- (SIZE DETERMINE ON INST)		4
288	BRM100A3		...NUTPLATE- (V52828) (SPEC BACN10JP3B) (OPT MK2000-3BAC (V15653)) (OPT NS103198-02 (V80539)) (OPT RMA9207-3 (V72962)) (OPT T8077S1032 (V11815)) (OPT VN201A1-02 (V92215)) (OPT ITEMS 288A, 288B)		2

57-54-33

 ILLUSTRATED PARTS LIST  
 01.1 Page 1057  
 Sep 01/95

FIG. & ITEM	PART NO.	AIRLINE PART NUMBER	NOMENCLATURE 1234567	EFF CODE	QTY PER ASSY
01- -288A	BR1000A3		...NUTPLATE- (V52828) (SPEC BACN10KB3) (OPT K2000-3 (V15653)) (OPT RMA9207-3 (V72962)) (OPT T8109S1032 (V11815)) (OPT VN101A1-02 (V92215)) (OPT K2000-3 (V15653)) (OPT ITEMS 288, 288B)		2
-288B	BRM200A3		...NUTPLATE- (V52828) (SPEC BACN10JP3A) (OPT MK1000-3BAC (V15653)) (OPT NS103197-02 (V80539)) (OPT RMA9201M3 (V72962)) (OPT T8076S1032 (V11815)) (OPT VN202A1-02 (V92215)) (OPT ITEMS 288, 288A)		2
289	287T0020-26		...ANGLE		1
290	112T1013-1		..FITTING- (OPT ITEM 290A)	A,C,E ,G,J	1
-290A	112T1013-5		..FITTING- (OPT ITEM 290)	A,C,E ,G,J	1
-290B	112T1013-7		..FITTING	L	1
-290C	112T1013-9		DELETED		
-295	112T1013-2		..FITTING- (OPT ITEM 295B)	B,D,F ,H,K	1
-295B	112T1013-6		..FITTING- (OPT ITEM 295)	B,D,F ,H,K	1
-295C	112T1013-8		..FITTING	M	1
-295D	112T1013-10		DELETED		

57-54-33

ILLUSTRATED PARTS LIST

01.1

Page 1058

Sep 01/95


**BOEING**  
 COMPONENT  
 MAINTENANCE MANUAL

FIG. & ITEM	PART NO.	AIRLINE PART NUMBER	NOMENCLATURE 1234567	EFF CODE	QTY PER ASSY
01-					
300	HL12VAZ8-9		ATTACHING PARTS ..BOLT- (V56878) (SPEC BACB30NX8K9) (OPT HL12VAZ8-9 (V73197)) (OPT HL12VAZ8-9 (V92215)) (OPT HL12VAZ8-9 (V97928)) (OPT L802-8K9 (V06725)) (OPT HL12VAZ8-9 (V08524))		12
305	AN960-416L		..WASHER		12
310	HL1187-8		..COLLAR- (V73197) (SPEC BACC30X8) (OPT HL87-8 (V73197)) (OPT HL87-8 (V92215)) (OPT HL1187-8 (V56878)) (OPT HL1187-8 (V92215)) (OPT HL87-8 (V56878)) -----*-----		12
315A	112T1711-9		..MACHINED ASSY	A,C,E ,G,J	1
-315B	112T1711-15		..MACHINED ASSY	L	1
-315C	112T1711-21		DELETED		
-320A	112T1711-10		..MACHINED ASSY	B,D,F ,H,K	1
-320B	112T1711-16		..MACHINED ASSY	M	1
-320C	112T1711-22		DELETED		
325A	112T1711-11		...BONDED ASSY	A,C,E ,G,J	1
-325B	112T1711-17		...BONDED ASSY	L	1
-325C	112T1711-23		DELETED		
-330A	112T1711-12		...BONDED ASSY	B,D,F ,H,K	1
-330B	112T1711-18		...BONDED ASSY	M	1
-330C	112T1711-24		DELETED		

57-54-33

ILLUSTRATED PARTS LIST

01.1

Page 1059

Sep 01/95

FIG. & ITEM	PART NO.	AIRLINE PART NUMBER	NOMENCLATURE 1234567	EFF CODE	QTY PER ASSY
01-335A	112T1019-3		....FITTING- (OPT ITEM 335B)	A,C,E ,G,J	1
-335B	112T1019-5		....FITTING- (OPT ITEM 335A)	A,C,E ,G,J	1
-335C	112T1019-7		....FITTING	L	1
-335D	112T1019-9		DELETED		
-340	112T1019-4		....FITTING- (OPT ITEM 340A)	B,D,F ,H,K	1
-340A	112T1019-6		....FITTING- (OPT ITEM 340)	B,D,F ,H,K	1
-340B	112T1019-8		....FITTING	M	1
-340C	112T1019-10		DELETED		
345	112T1011-1		.BRACE ASSY-SIDE	A	1
347	112T1011-7		.BRACE ASSY-SIDE	C,E,G ,J	1
-347A	112T1011-13		.BRACE ASSY-SIDE	L	1
-350	112T1011-2		.BRACE ASSY-SIDE	B	1
-352	113T1011-8		DELETED		
-352A	112T1011-14		.BRACE ASSY-SIDE	M,R-T	1
-352B	112T1011-8		.BRACE ASSY-SIDE	D,F,K	1
355A	HL10VAZ12-12		.BOLT- (V60516) (SPEC BACB30MY12K12) (OPT HL10VAZ12-12 (VOPTK6))		6
360A	AN960C616L		.WASHER		6
365	H10-6BAC		.NUT- (V15653) (SPEC BACN10JC6) (OPT RMLH9075-6 (V72962)) (OPT 96-064 (V80539)) (OPT BRH10A6 (V52828)) -----*		6
370	BACB28AA12B105		..BUSHING	A-M	1
375	BACB28W14C100		..BUSHING	A-M	1
380	112T1011-3		..MACHINED ASSY	A	1
383	112T1011-9		..MACHINED ASSY	C,E,G ,J	1

57-54-33

 ILLUSTRATED PARTS LIST  
 01.1 Page 1060  
 Sep 01/95




**BOEING**  
 COMPONENT  
 MAINTENANCE MANUAL

FIG. & ITEM	PART NO.	AIRLINE PART NUMBER	NOMENCLATURE 1234567	EFF CODE	QTY PER ASSY
01-					
-383A	112T1011-15		..MACHINED ASSY	L	1
-385	112T1011-4		..MACHINED ASSY	B	1
-387	112T1011-10		..MACHINED ASSY	D,F,H K	1
-387A	112T1011-16		..MACHINED ASSY	M	1
390	112T1011-5		...BONDED ASSY	A	1
392	112T1011-11		...SEALED ASSY-FAY	C,E,G J	1
-392A	112T1011-17		...SEALED ASSY-FAY	L	1
-395	112T1011-6		...BONDED ASSY	B	1
-397	112T1011-12		...SEALED ASSY-FAY	D,F,H K	1
-397A	112T1011-18		...SEALED ASSY-FAY	M	1
400	HL12VAZ8-15		....BOLT- (V56878) (SPEC BACB30NX8K15) (OPT HL12VAZ8-15 (V73197)) (OPT HL12VAZ8-15 (V92215)) (OPT HL12VAZ8-15 (V97928)) (OPT L802-8K15 (V06725)) (OPT HL12-15 (V06725))		3
405	AN960-416L		....WASHER		3
410	HL1187-8		....COLLAR- (V73197) (SPEC BACC30X8) (OPT HL87-8 (V73197)) (OPT HL87-8 (V92215)) (OPT HL1187-8 (V56878)) (OPT HL1187-8 (V92215)) (OPT HL87-8 (V56878))		3
415	112T1221-1		....FITTING	A	1
417	112T1221-5		....FITTING- (OPT ITEM 417A)	C,E,G J	1
-417A	112T1221-7		....FITTING- (OPT ITEM 417)	C,E,G J	1

57-54-33

ILLUSTRATED PARTS LIST

01.1

Page 1061

Sep 01/95

FIG. & ITEM	PART NO.	AIRLINE PART NUMBER	NOMENCLATURE 1234567	EFF CODE	QTY PER ASSY
01-					
-417B	112T1221-9		....FITTING	L	1
-420	112T1221-2		....FITTING	B	1
-422	112T1221-6		....FITTING-	D,F,H	1
			(OPT ITEM 422A)	,K	
-422A	112T1221-8		....FITTING-	D,F,H	1
			(OPT ITEM 422)	,K	
-422B	112T1221-10		....FITTING	M	1
425	112T1222-1		....FITTING	A	1
427	112T1222-5		....FITTING-	C,E,G	1
			(OPT ITEM 427A)	,J	
-427A	112T1222-7		....FITTING-	C,E,G	1
			(OPT ITEM 427)	,J	
-427B	112T1222-9		....FITTING	L	1
-430	112T1222-2		....FITTING	B	1
-432	112T1222-6		....FITTING-	D,F,H	1
			(OPT ITEM 432A)	,K	
-432A	112T1222-8		....FITTING-	D,F,H	1
			(OPT ITEM 432)	,K	
-432B	112T1222-10		....FITTING	M	1
435	112T1710-7		.BONDED ASSY-OUTBD SPRT	A,C,E	1
				,G,J	
-435A	112T1710-13		DELETED		
-435B	112T1710-19		.BONDED ASSY-OUTBD SPRT	L	1
-440	112T1710-8		.BONDED ASSY-OUTBD SPRT	B,D,F	1
				,H,K	
-440A	112T1710-14		DELETED		
-440B	112T1710-20		.BONDED ASSY-OUTBD SPRT	M	1
442	BACR15FT6AD		..RIVET-		6
			(SIZE DETERMINE ON INST)		
443	287T1026-1		..BRACKET-WIRE SPRT		1
445	112T1710-9		..MACHINED ASSY	A,C,E	1
				,G,J	
-445A	112T1710-15		..MACHINED ASSY	L	1
-450	112T1710-10		..MACHINED ASSY	B,D,F	1
				,H,K	
-450A	112T1710-16		..MACHINED ASSY	M	1
455	112T1710-11		...BOND ASSY	A,C,E	1
				,G,J	

57-54-33

ILLUSTRATED PARTS LIST

01.1

Page 1062

Sep 01/95


**BOEING**  
 COMPONENT  
 MAINTENANCE MANUAL

FIG. & ITEM	PART NO.	AIRLINE PART NUMBER	NOMENCLATURE 1234567	EFF CODE	QTY PER ASSY
01-					
-455A	112T1710-17		...BOND ASSY	L	1
-460	112T1710-12		...BOND ASSY	B,D,F H,K	1
-460A	112T1710-18		...BOND ASSY	M	1
465	112T1038-1		....BUSHING		2
467	HL12VAZ8-9		....BOLT- (V56878) (SPEC BACB30NX8K9) (OPT HL12VAZ8-9 (V73197)) (OPT HL12VAZ8-9 (V92215)) (OPT HL12VAZ8-9 (V97928)) (OPT L802-8K9 (V06725)) (OPT HL12VAZ8-9 (V08524))		4
470	HL12VAZ8-17		....BOLT- (V56878) (SPEC BACB30NX8K17) (OPT HL12VAZ8-17 (V73197)) (OPT HL12VAZ8-17 (V92215)) (OPT HL12VAZ8-17 (V97928)) (OPT L802-8K17 (V06725)) (OPT HL12-17 (V06725))		1

57-54-33

 ILLUSTRATED PARTS LIST  
 01.1 Page 1063  
 Sep 01/95

FIG. & ITEM	PART NO.	AIRLINE PART NUMBER	NOMENCLATURE 1234567	EFF CODE	QTY PER ASSY
01- 475 480	AN960-416L HL1187-8		....WASHER ....COLLAR- (V73197) (SPEC BACC30X8) (OPT HL87-8 (V73197)) (OPT HL87-8 (V92215)) (OPT HL1187-8 (V56878)) (OPT HL1187-8 (V92215)) (OPT HL87-8 (V56878))		5 5
485	112T1012-1		....FITTING- (OPT ITEM 485A)	A,C,E ,G,J	1
-485A	112T1012-5		....FITTING- (OPT ITEM 485)	A,C,E ,G,J	1
-485B	112T1012-7		....FITTING	L	1
-490	112T1012-2		....FITTING- (OPT ITEM 490A)	B,D,F ,H,K	1
-490A	112T1012-6		....FITTING- (OPT ITEM 490)	B,D,F ,H,K	1
-490B	112T1012-8		....FITTING	M	1
495	112T1020-3		....FITTING- (OPT ITEM 495A)	A,C,E ,G,J	1
-495A	112T1020-5		....FITTING- (OPT ITEM 495)	A,C,E ,G,J	1
-495B	112T1020-7		....FITTING	L	1
-500	112T1020-4		....FITTING- (OPT ITEM 500A)	B,D,F ,H,K	1
-500A	112T1020-6		....FITTING- (OPT ITEM 500)	B,D,F ,H,K	1
-500B	112T1020-8		....FITTING	M	1

# 57-54-33

 ILLUSTRATED PARTS LIST  
 01.1 Page 1064  
 Sep 01/95


**BOEING**  
 COMPONENT  
 MAINTENANCE MANUAL

FIG. & ITEM	PART NO.	AIRLINE PART NUMBER	NOMENCLATURE 1234567	EFF CODE	QTY PER ASSY
01-					
505	112T1717-4		.PLATE-BRG		1
510	112T1717-3		.PLATE-BRG		1
520	112T1018-1		.HOUSING ASSY		1
525	MS15720-1		..NIPPLE-LUBE		2
530	112T1039-1		..BUSHING		4
535	112T1017-1		..FITTING- (OPT ITEM 535A)		1
-535A	112T1017-3		..FITTING- (OPT ITEM 535)		1
800	112T1717-9		INSTALLATION PART SHIM- (MFD FROM SH CRES BAC1534-62C 20.062 IN. 5.30 IN. 14.40 IN.)		1

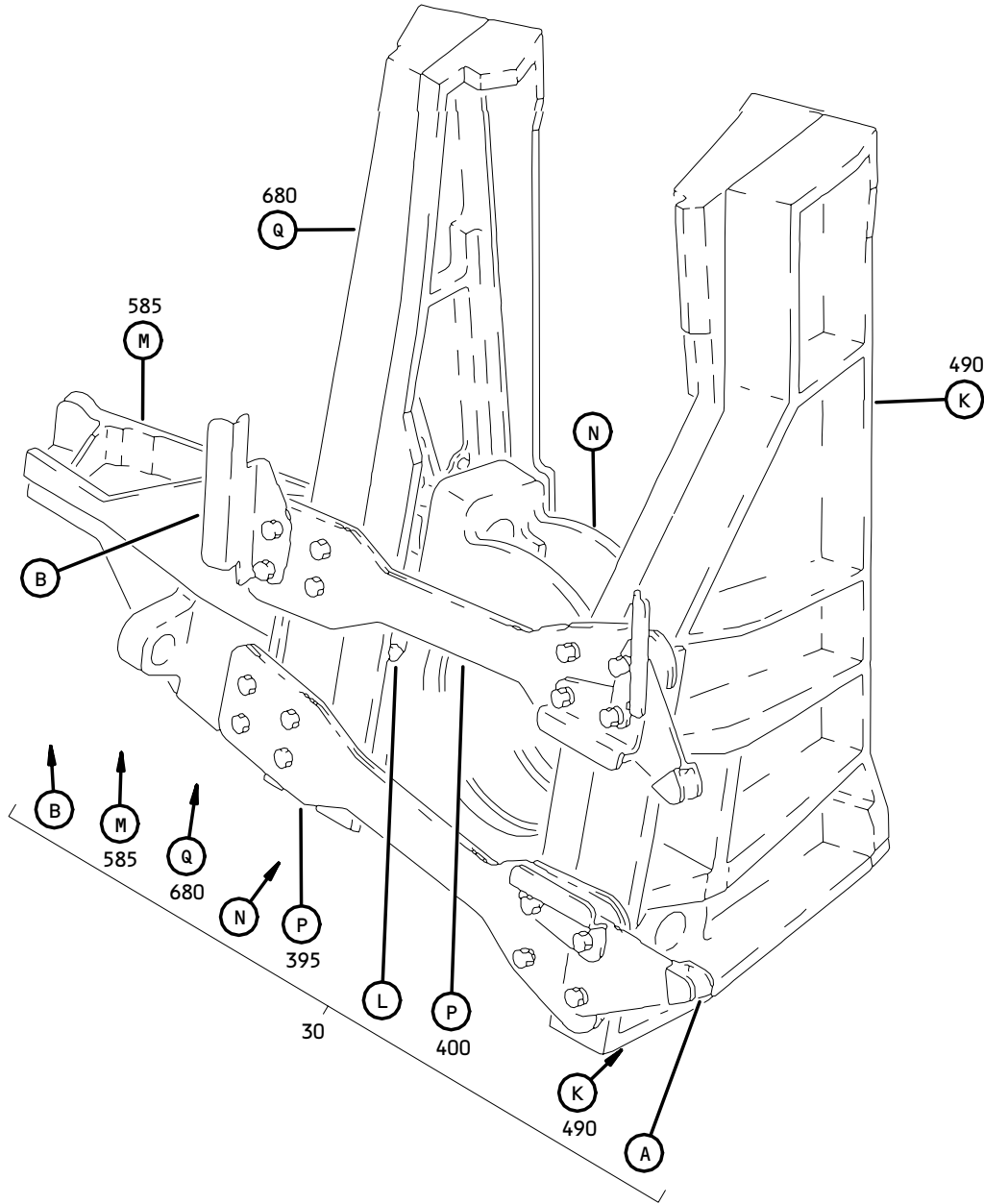
# 57-54-33

ILLUSTRATED PARTS LIST

01.1

Page 1065

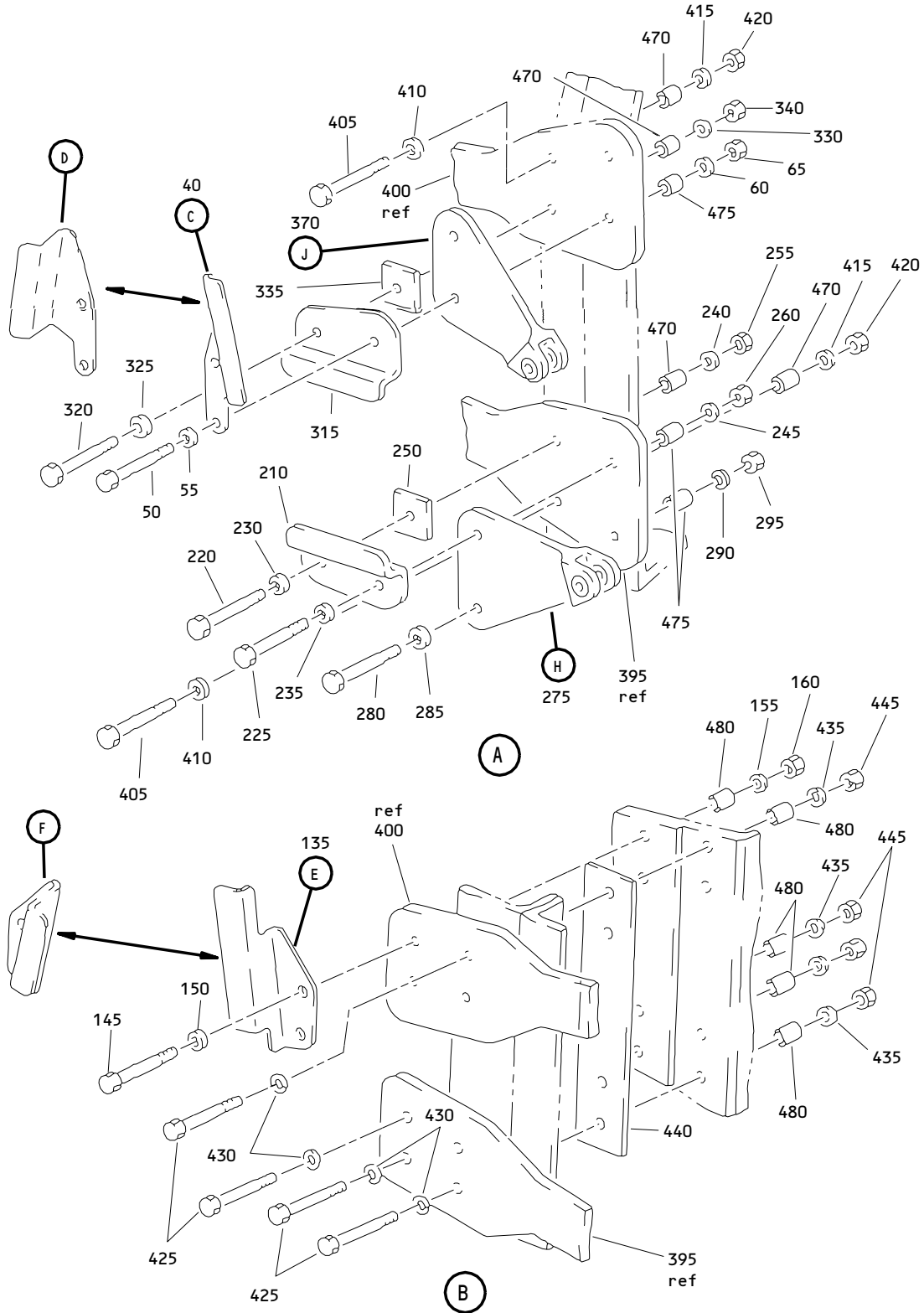
Sep 01/95



Forward Trunnion Bearing Support Assembly  
Figure 2 (Sheet 1)

**57-54-33**

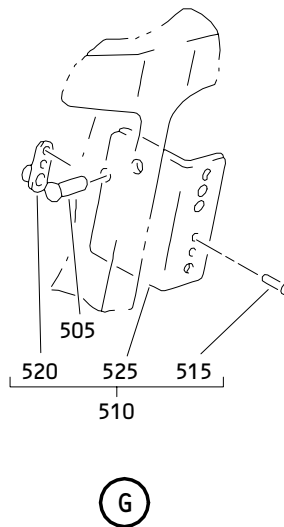
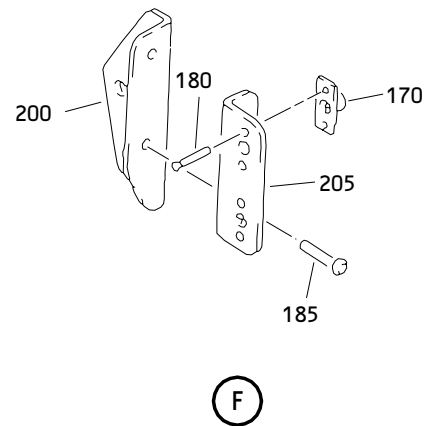
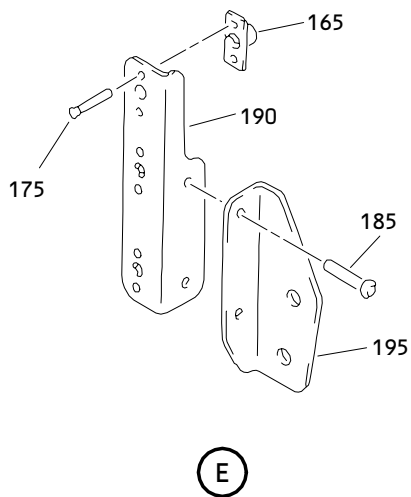
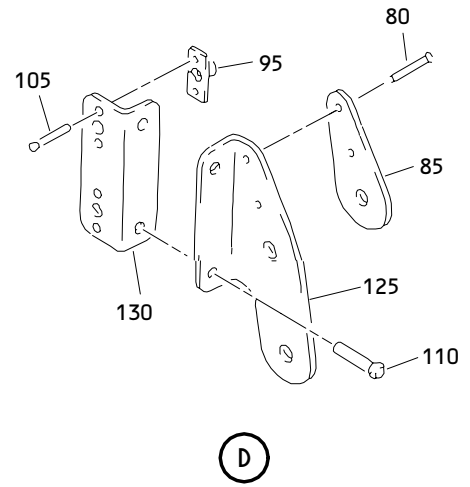
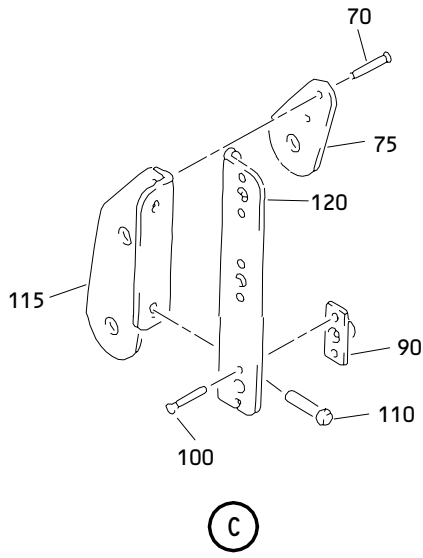
ILLUSTRATED PARTS LIST  
01.1 Page 1067  
Sep 01/95



Forward Trunnion Bearing Support Assembly  
Figure 2 (Sheet 2)

**57-54-33**

ILLUSTRATED PARTS LIST  
01.1 Page 1068  
Sep 01/95

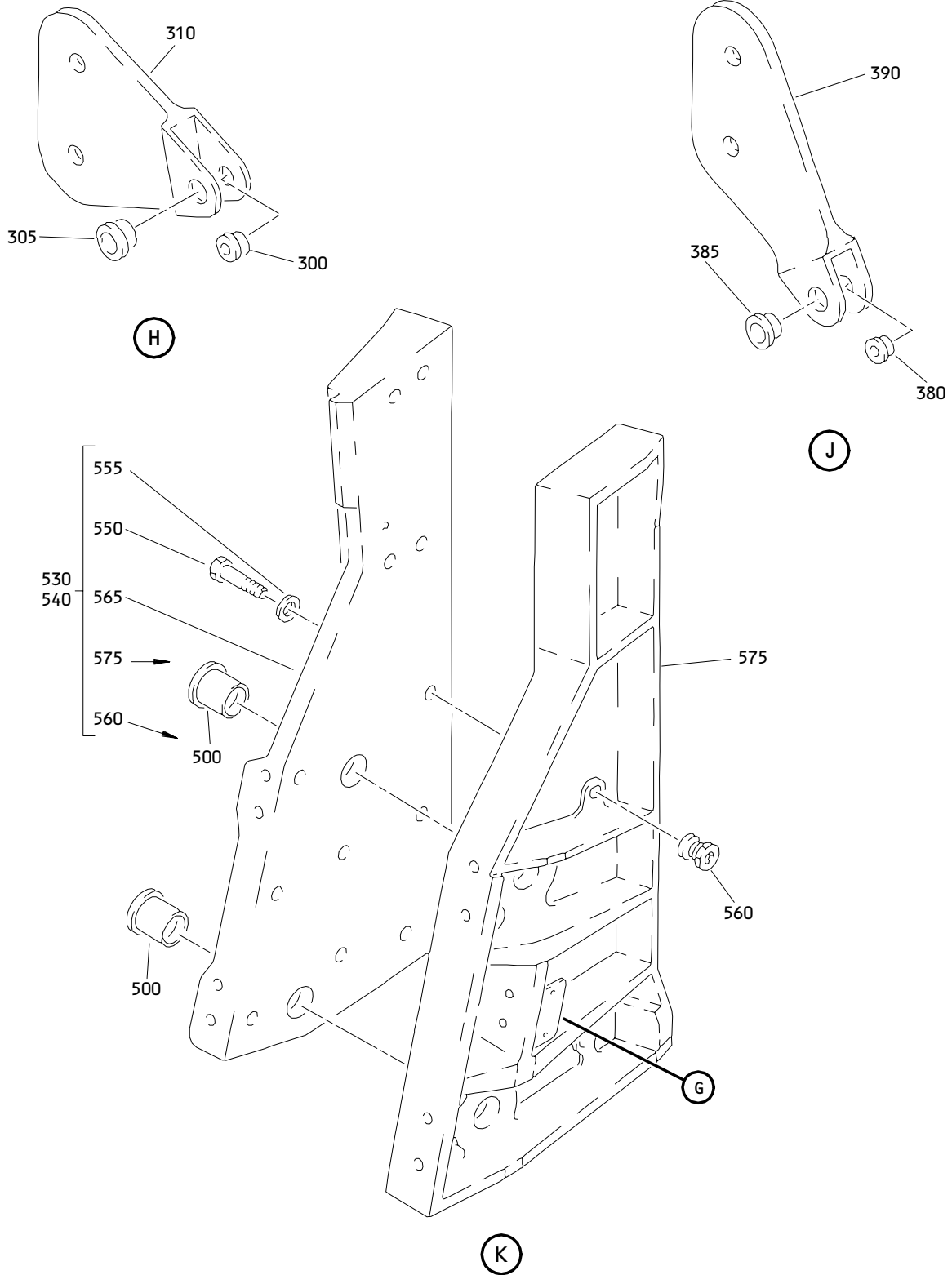


Forward Trunnion Bearing Support Assembly  
 Figure 2 (Sheet 3)

**57-54-33**

ILLUSTRATED PARTS LIST  
 01.1 Page 1069  
 Sep 01/95

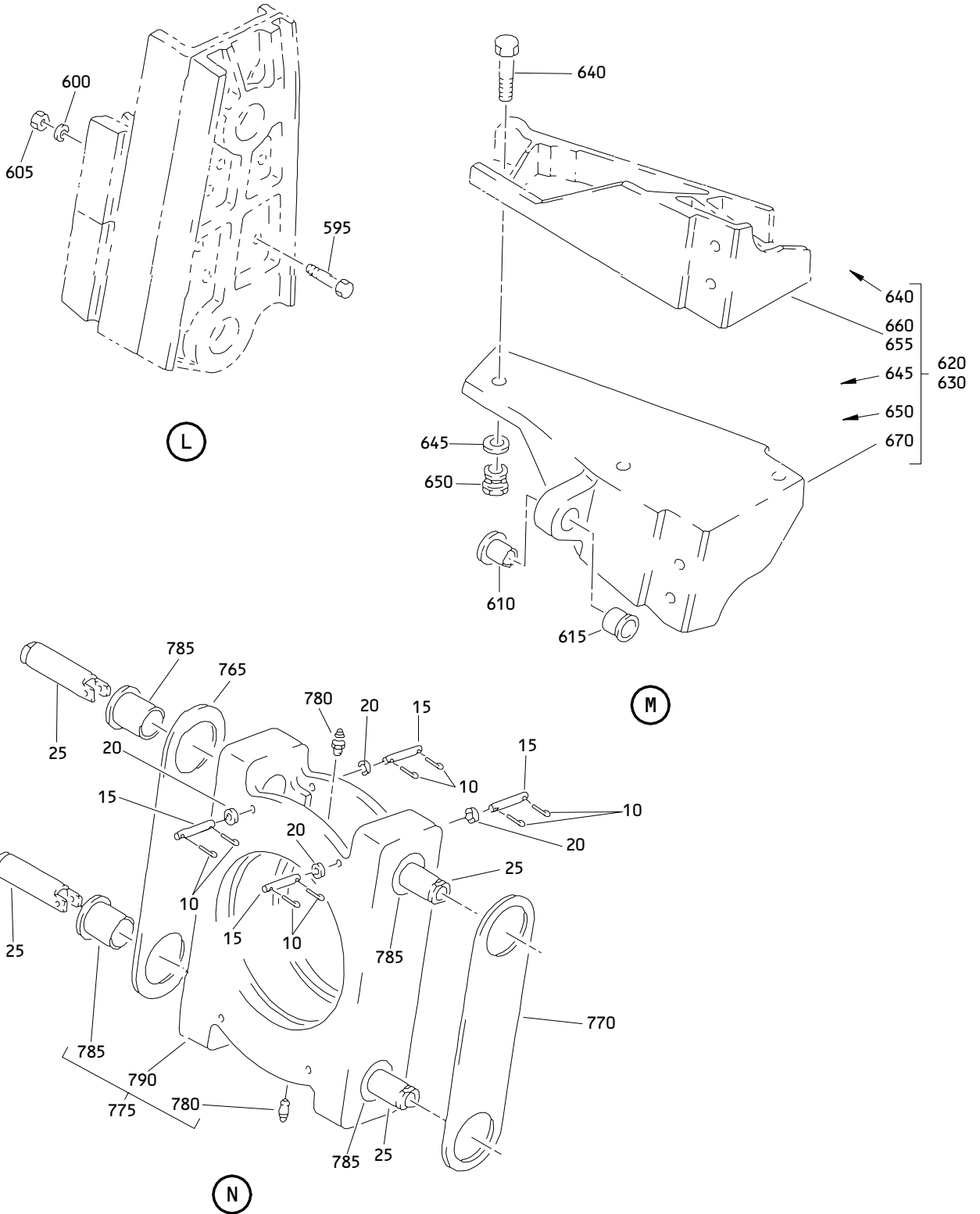




Forward Trunnion Bearing Support Assembly  
 Figure 2 (Sheet 4)

**57-54-33**

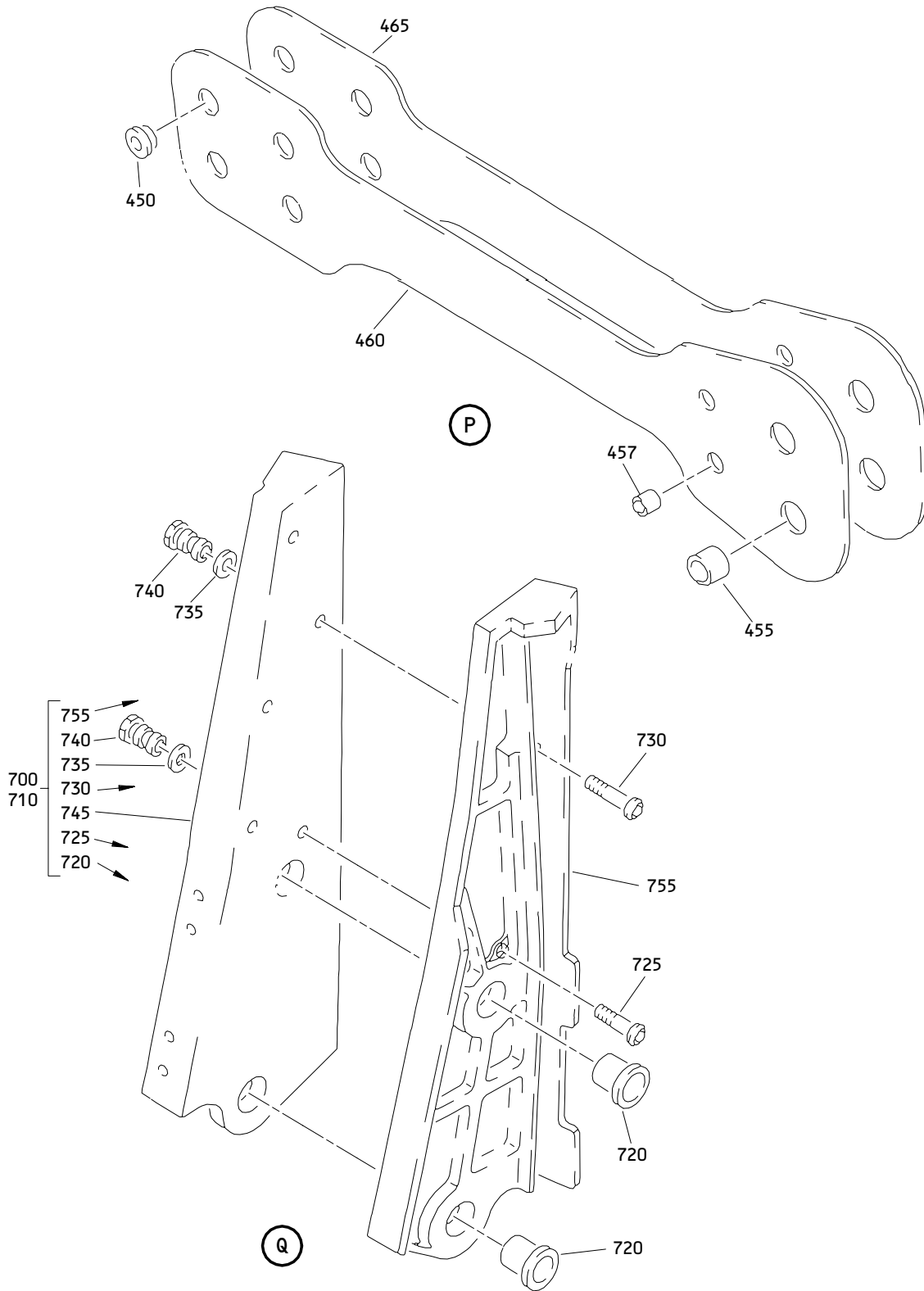
ILLUSTRATED PARTS LIST  
 01.1 Page 1070  
 Sep 01/95



Forward Trunnion Bearing Support Assembly  
 Figure 2 (Sheet 5)

**57-54-33**

ILLUSTRATED PARTS LIST  
 01.1 Page 1071  
 Sep 01/95



**Forward Trunnion Bearing Support Assembly  
 Figure 2 (Sheet 6)**

**57-54-33**

**ILLUSTRATED PARTS LIST  
 01.1 Page 1072  
 Sep 01/95**


**BOEING**  
 COMPONENT  
 MAINTENANCE MANUAL

FIG. & ITEM	PART NO.	AIRLINE PART NUMBER	NOMENCLATURE 1234567	EFF CODE	QTY PER ASSY
R 02- -1	112T1717-29		SUPPORT ASSY-FWD TRUNNION BRG (LH)	U	RF
R -1A	112T1717-31		SUPPORT ASSY-FWD TRUNNION BRG (LH)	V	RF
R -1B	112T1717-33		SUPPORT ASSY-FWD TRUNNION BRG (LH)	W	RF
R -1C	112T1717-35		SUPPORT ASSY-FWD TRUNNION BRG (LH)	N	RF
R -1D	112T1717-37		SUPPORT ASSY-FWD TRUNNION BRG (LH)	P	RF
R -1E	112T1717-39		SUPPORT ASSY-FWD TRUNNION BRG (LH)	Q	RF
R -5	112T1717-30		SUPPORT ASSY-FWD TRUNNION BRG (RH)	X	RF
R -5A	112T1717-32		SUPPORT ASSY-FWD TRUNNION BRG (RH)	Y	RF
R -5B	112T1717-34		SUPPORT ASSY-FWD TRUNNION BRG (RH)	Z	RF
R -5C	112T1717-36		SUPPORT ASSY-FWD TRUNNION BRG (RH)	R	RF
R -5D	112T1717-38		SUPPORT ASSY-FWD TRUNNION BRG (RH)	S	RF
R -5E	112T1717-40		SUPPORT ASSY-FWD TRUNNION BRG (RH)	T	RF
R 10	MS24665-153		.PIN-COTTER	N-Z	16
R 15	112T1103-1		.PIN-RETAINING	N-Z	8
R 20	AN960C416L		.WASHER	N-Z	8
R 25	112T1078-2		.PIN-FUSE	U,X	4
R -25A	112T1035-2		.PIN-FUSE	V,Y	4
R -25B	112T1078-1		.PIN-FUSE	W,Z	4
R -25C	112T1035-3		.PIN-FUSE	P,S	4
R -25D	112T1078-3		.PIN-FUSE	Q,T	4
R -25E	112T1078-4		.PIN-FUSE	N,R	4
R 30	112T1717-27		.SUPPORT ASSY	N-Q, U-W	1

57-54-33

 ILLUSTRATED PARTS LIST  
 01.1 Page 1073  
 Sep 01/95

FIG. & ITEM	PART NO.	AIRLINE PART NUMBER	NOMENCLATURE 1234567	EFF CODE	QTY PER ASSY
R 02-35	112T1717-28		.SUPPORT ASSY	R-T, X-Z	1
R 40	272T1441-23		..BRACKET ASSY	N-Q, U-W	1
R -45	272T1441-24		..BRACKET ASSY	R-T, X-Z	1
R 50	BACB30US10K23		ATTACHING PARTS ..BOLT	N-Z	2
R 55	BACW10BP10C		..WASHER- (V10630) (SPEC BACW10BP10C)	N-Z	2
R 60	BACW10BP10P		..WASHER- (V10630) (SPEC BACW10BP10P)	N-Z	2
R 65	BMN5024CWD3-10		..NUT- (V97928) (SPEC BACN10HR10CD) (OPT H51560-10 (V15653)) (OPT 102LH9031-10 (V72962)) (OPT 67832CD1018 (V56878)) (OPT BH00303CM10 (V27238)) (OPT CR603010 (V62554)) (OPT SL7108C10 (V11815)) (OPT VCU0005D10 (V06710)) (OPT BMN10HRCWD3-10 (V97928)) -----*	N-Z	2
R 70	BACR15BA3AD		...RIVET- (SIZE DETERMINE ON INST)	N-Q, U-W	2
R 75	272T1441-9		...SPACER	N-Q, U-W	1
R 80	BACR15BA3AD		...RIVET- (SIZE DETERMINE ON INST)	R-T, X-Z	2
R 85	272T1441-9		...SPACER	R-T, X-Z	1

57-54-33

 ILLUSTRATED PARTS LIST  
 01.1 Page 1074  
 Sep 01/95


**BOEING**  
 COMPONENT  
 MAINTENANCE MANUAL

FIG. & ITEM	PART NO.	AIRLINE PART NUMBER	NOMENCLATURE 1234567	EFF CODE	QTY PER ASSY
R 02-90	BRFM20A3		...NUTPLATE- (V52828) (SPEC BACN10JN3) (OPT MF1000-3BAC (V15653)) (OPT NS103218-02 (V80539)) (OPT RMF9201M3 (V72962)) (OPT VN252A02 (V92215)) (OPT MF1000-3BAC (V15653)) (OPT MF53049-3 (V15653))	N-Q, U-W	3
R 95	BRFM20A3		...NUTPLATE- (V52828) (SPEC BACN10JN3) (OPT MF1000-3BAC (V15653)) (OPT NS103218-02 (V80539)) (OPT RMF9201M3 (V72962)) (OPT VN252A02 (V92215)) (OPT MF1000-3BAC (V15653)) (OPT MF53049-3 (V15653))	R-T, X-Z	2
R 100	BACR15BA3AD		ATTACHING PARTS ...RIVET- (SIZE DETERMINE ON INST)	N-Q, U-W	6
R 105	BACR15BA3AD		...RIVET- (SIZE DETERMINE ON INST) -----*	R-T, X-Z	4
R 110	BACR15FT5AD		...RIVET- (SIZE DETERMINE ON INST)	N-Z	2
R 115	272T1441-17		...BRACKET	N-Q, U-W	1
R 120	272T1441-20		...BRACKET	N-Q, U-W	1

57-54-33

 ILLUSTRATED PARTS LIST  
 01.1 Page 1075  
 Sep 01/95

FIG. & ITEM	PART NO.	AIRLINE PART NUMBER	NOMENCLATURE 1234567	EFF CODE	QTY PER ASSY
R 02-125	272T1441-18		...BRACKET	R-T, X-Z	1
R 130	272T1441-10		...BRACKET	R-T, X-Z	1
R 135	272T1441-21		..BRACKET ASSY	N-Q, U-W	1
R -140	272T1441-22		..BRACKET ASSY	R-T, X-Z	1
R 145	BACB30US7K23		ATTACHING PARTS ..BOLT- (V06725) (SPEC BACB30US7K23) (OPT BACB30US7K23 (V08524)) (OPT BACB30US7K23 (V50945)) (OPT BACB30US7K23 (V27624)) (OPT BACB30US7K23 (V56878)) (OPT BACB30US7K23 (V06710)) (OPT BACB30US7K23 (V92215))	N-Z	2
R 150	BACW10BP7C		..WASHER- (V10630) (SPEC BACW10BP7C)	N-Z	2
R 155	BACW10BP7P		..WASHER- (V10630) (SPEC BACW10BP7P)	N-Z	2

# 57-54-33

 ILLUSTRATED PARTS LIST  
 01.1 Page 1076  
 Sep 01/95


**BOEING**  
 COMPONENT  
 MAINTENANCE MANUAL

FIG. & ITEM	PART NO.	AIRLINE PART NUMBER	NOMENCLATURE	EFF CODE	QTY PER ASSY
R 02-160	H51560-7		1234567 ..NUT- (V15653) (SPEC BACN10HR7CD) (OPT 67832CD720 (V56878)) (OPT 102LH9031-7 (V72962)) (OPT BH00303CM7 (V27238)) (OPT BMN5024CWD37 (V97928)) (OPT CR60307 (V62554)) (OPT SL7108C7 (V11815)) (OPT SL7108C7 (V11815)) (OPT VCU0005D7 (V06710)) (OPT 102LH90317 (V72962)) (OPT 67832CD7 (V56878)) -----*-----	N-Z	2
R 165	BRFM20A3		...NUTPLATE- (V52828) (SPEC BACN10JN3) (OPT MF1000-3BAC (V15653)) (OPT NS103218-02 (V80539)) (OPT RMF9201M3 (V72962)) (OPT VN252A02 (V92215)) (OPT MF1000-3BAC (V15653)) (OPT MF53049-3 (V15653))	N-Q, U-W	3

57-54-33

 ILLUSTRATED PARTS LIST  
 01.1 Page 1077  
 Sep 01/95



FIG. & ITEM	PART NO.	AIRLINE PART NUMBER	NOMENCLATURE 1234567	EFF CODE	QTY PER ASSY
R 02-170	BRFM20A3		...NUTPLATE- (V52828) (SPEC BACN10JN3) (OPT MF1000-3BAC (V15653)) (OPT NS103218-02 (V80539)) (OPT RMF9201M3 (V72962)) (OPT VN252A02 (V92215)) (OPT MF1000-3BAC (V15653)) (OPT MF53049-3 (V15653)) ATTACHING PARTS	R-T, X-Z	2
R 175	BACR15BA3AD		...RIVET- (SIZE DETERMINE ON INST)	N-Q, U-W	6
R 180	BACR15BA3AD		...RIVET- (SIZE DETERMINE ON INST) -----*	R-T, X-Z	4
R 185	BACR15FT5AD		...RIVET- (SIZE DETERMINE ON INST)	N-Z	2
R 190	272T1441-15		...BRACKET	N-Q, U-W	1
R 195	272T1441-19		...BRACKET	N-Q, U-W	1
R 200	272T1441-16		...BRACKET	R-T, X-Z	1
R 205	272T1441-10		...BRACKET	R-T, X-Z	1
R 210	287T6115-9		..BRACKET ASSY	N-Z	1

# 57-54-33

 ILLUSTRATED PARTS LIST  
 01.1 Page 1078  
 Sep 01/95


**BOEING**  
 COMPONENT  
 MAINTENANCE MANUAL

FIG. & ITEM	PART NO.	AIRLINE PART NUMBER	NOMENCLATURE 1234567	EFF CODE	QTY PER ASSY
R 02- 220	BACB30US6K19		ATTACHING PARTS ..BOLT- (V06725) (SPEC BACB30US6K19) (OPT BACB30US6K19 (V08524)) (OPT BACB30US6K19 (V50945)) (OPT BACB30US6K19 (V27624)) (OPT BACB30US6K19 (V56878)) (OPT BACB30US6K19 (V06710)) (OPT BACB30US6K19 (V92215))	N-Z	1
R 225	BACB30US10K20		..BOLT- (V06725) (SPEC BACB30US10K20) (OPT BACB30US10K20 (V08524)) (OPT BACB30US10K20 (V50945)) (OPT BACB30US10K20 (V27624)) (OPT BACB30US10K20 (V56878)) (OPT BACB30US10K20 (V06710)) (OPT BACB30US10K20 (V92215))	N-Z	1
R 230	BACW10BP6C		..WASHER- (V10630) (SPEC BACW10BP6C)	N-Z	1
R 235	BACW10BP10C		..WASHER- (V10630) (SPEC BACW10BP10C)	N-Z	1
R 240	BACW10BP6P		..WASHER- (V10630) (SPEC BACW10BP6P)	N-Z	1
R 245	BACW10BP10P		..WASHER- (V10630) (SPEC BACW10BP10P)	N-Z	1
R 250	287T6118-1		..SHIM	N-Z	1

57-54-33

 ILLUSTRATED PARTS LIST  
 01.1 Page 1079  
 Sep 01/95

FIG. & ITEM	PART NO.	AIRLINE PART NUMBER	NOMENCLATURE 1234567	EFF CODE	QTY PER ASSY
R 02-255	H51560-6		..NUT- (V15653) (SPEC BACN10HR6CD) (OPT 67832CD624 (V56878)) (OPT BMN5024CWD3-6 (V97928)) (OPT 102LH9031-6 (V72962)) (OPT BH00303CM6 (V27238)) (OPT SL7108C624 (V11815)) (OPT BH00303CM6 (V27238)) (OPT BMN5024CWD36 (V97928)) (OPT CR60306 (V62554)) (OPT H51560 (V15653)) (OPT SL7108C6 (V11815)) (OPT VCU0005D (V06710)) (OPT 102LH90316 (V72962)) (OPT 67832CD6 (V56878)) (OPT BH003026CD (V27238)) (OPT BMNN10HR6CD (V97928)) (OPT CR59066CD (V62554)) (OPT H966CD (V15653)) (OPT RMLH22 (V72962)) (OPT VAL280096CD (V06710)) (OPT 678326CD (V56878)) (OPT BMN10HRCWD3-6 (V97928))	N-Z	1

# 57-54-33

 ILLUSTRATED PARTS LIST  
 01.1 Page 1080  
 Sep 01/95


**BOEING**  
 COMPONENT  
 MAINTENANCE MANUAL

FIG. & ITEM	PART NO.	AIRLINE PART NUMBER	NOMENCLATURE 1234567	EFF CODE	QTY PER ASSY
R 02-260	BMN5024CWD3-10		..NUT- (V97928) (SPEC BACN10HR10CD) (OPT H51560-10 (V15653)) (OPT 102LH9031-10 (V72962)) (OPT 67832CD1018 (V56878)) (OPT BH00303CM10 (V27238)) (OPT CR603010 (V62554)) (OPT SL7108C10 (V11815)) (OPT VCU0005D10 (V06710)) (OPT BMN10HRCWD3-10 (V97928)) -----*	N-Z	1
R 265	BACR15BA3AD		...RIVET- (SIZE DETERMINE ON INST)	N-Z	6
R 267	T8101S3SK		...NUTPLATE- (V11815) (SPEC BACN10KA3C) (OPT NS103228-02 (V80539))	N-Z	3
R 270	287T6115-5		...BRACKET	N-Z	1
R 275	113T1893-2		..FITTING ASSY ATTACHING PARTS	N-Z	1
R 280	BACB30US10K19		..BOLT- (V06725) (SPEC BACB30US10K19) (OPT BACB30US10K19 (V08524)) (OPT BACB30US10K19 (V50945)) (OPT BACB30US10K19 (V27624)) (OPT BACB30US10K19 (V56878)) (OPT BACB30US10K19 (V06710)) (OPT BACB30US10K19 (V92215))	N-Z	1

57-54-33

 ILLUSTRATED PARTS LIST  
 01.1 Page 1080A  
 Sep 01/95

FIG. & ITEM	PART NO.	AIRLINE PART NUMBER	NOMENCLATURE 1234567	EFF CODE	QTY PER ASSY
R 02-285	BACW10BP10C		..WASHER- (V10630) (SPEC BACW10BP10C)	N-Z	1
R 290	BACW10BP10P		..WASHER- (V10630) (SPEC BACW10BP10P)	N-Z	1
R 295	BMN5024CWD3-10		..NUT- (V97928) (SPEC BACN10HR10CD) (OPT H51560-10 (V15653)) (OPT 102LH9031-10 (V72962)) (OPT 67832CD1018 (V56878)) (OPT BH00303CM10 (V27238)) (OPT CR603010 (V62554)) (OPT SL7108C10 (V11815)) (OPT VCU0005D10 (V06710)) (OPT BMN10HRCWD3-10 (V97928)) -----*	N-Z	1
R 300	BACB28AP04P011		...BUSHING	N-Z	1
R 305	BACB28AM06B011A		...BUSHING	N-Z	1
R 310	113T1893-4		...FITTING	N-Z	1
R 315	287T6115-10		..BRACKET ASSY	N-Z	1

# 57-54-33

 ILLUSTRATED PARTS LIST  
 01.1 Page 1080B  
 Sep 01/95

**BOEING**  
 COMPONENT  
 MAINTENANCE MANUAL

FIG. & ITEM	PART NO.	AIRLINE PART NUMBER	NOMENCLATURE 1234567	EFF CODE	QTY PER ASSY
R 02-320	BACB30US6K15		ATTACHING PARTS ..BOLT- (V06725) (SPEC BACB30US6K15) (OPT BACB30US6K15 (V08524)) (OPT BACB30US6K15 (V50945)) (OPT BACB30US6K15 (V27624)) (OPT BACB30US6K15 (V56878)) (OPT BACB30US6K15 (V06710)) (OPT BACB30US6K15 (V92215))	N-Z	1
R 325	BACW10BP6C		..WASHER- (V10630) (SPEC BACW10BP6C)	N-Z	1
R 330	BACW10BP6P		..WASHER- (V10630) (SPEC BACW10BP6P)	N-Z	1
R 335	287T6118-1		..SHIM	N-Z	1

**57-54-33**

ILLUSTRATED PARTS LIST  
 01.1 Page 1080C  
 Sep 01/95

FIG. & ITEM	PART NO.	AIRLINE PART NUMBER	NOMENCLATURE	EFF CODE	QTY PER ASSY
R 02-340	H51560-6		1234567  ..NUT- (V15653) (SPEC BACN10HR6CD) (OPT 67832CD624 (V56878)) (OPT BMN5024CWD3-6 (V97928)) (OPT 102LH9031-6 (V72962)) (OPT BH00303CM6 (V27238)) (OPT SL7108C624 (V11815)) (OPT BH00303CM6 (V27238)) (OPT BMN5024CWD36 (V97928)) (OPT CR60306 (V62554)) (OPT H51560 (V15653)) (OPT SL7108C6 (V11815)) (OPT VCU0005D (V06710)) (OPT 102LH90316 (V72962)) (OPT 67832CD6 (V56878)) (OPT BH003026CD (V27238)) (OPT BMNN10HR6CD (V97928)) (OPT CR59066CD (V62554)) (OPT H966CD (V15653)) (OPT RMLH22 (V72962)) (OPT VAL280096CD (V06710)) (OPT 678326CD (V56878)) (OPT BMN10HRCWD3-6 (V97928)) -----*-----	N-Z	1

# 57-54-33

 ILLUSTRATED PARTS LIST  
 01.1 Page 1080D  
 Sep 01/95


**BOEING**  
 COMPONENT  
 MAINTENANCE MANUAL

FIG. & ITEM	PART NO.	AIRLINE PART NUMBER	NOMENCLATURE 1234567	EFF CODE	QTY PER ASSY
R 02-345	BACR15BA3AD		...RIVET- (SIZE DETERMINE ON INST)	N-Z	6
R 350	T8101S3SK		...NUTPLATE- (V11815) (SPEC BACN10KA3C) (OPT NS103228-02 (V80539))	N-Z	3
R 355	287T6115-6		...BRACKET	N-Z	1
R 370	113T1893-1		..FITTING ASSY	N-Z	1
R 380	BACB28AP04P011		...BUSHING	N-Z	1
R 385	BACB28AM06B011A		...BUSHING	N-Z	1
R 390	113T1893-3		...FITTING	N-Z	1
R 395	112T1045-7		..BONDED ASSY-STRAP FWD	N-Z	1
R 400	112T1045-8		..BONDED ASSY-STRAP FWD ATTACHING PARTS	N-Z	1
R 405	BACB30US6K15		..BOLT- (V06725) (SPEC BACB30US6K15) (OPT BACB30US6K15 (V08524)) (OPT BACB30US6K15 (V50945)) (OPT BACB30US6K15 (V27624)) (OPT BACB30US6K15 (V56878)) (OPT BACB30US6K15 (V06710)) (OPT BACB30US6K15 (V92215))	N-Z	2
R 410	BACW10BP6C		..WASHER- (V10630) (SPEC BACW10BP6C)	N-Z	2
R 415	BACW10BP6P		..WASHER- (V10630) (SPEC BACW10BP6P)	N-Z	2

57-54-33

 ILLUSTRATED PARTS LIST  
 01.1 Page 1080E  
 Sep 01/95



FIG. & ITEM	PART NO.	AIRLINE PART NUMBER	NOMENCLATURE	EFF CODE	QTY PER ASSY
R 02-420	H51560-6		1234567 ..NUT- (V15653) (SPEC BACN10HR6CD) (OPT 67832CD624 (V56878)) (OPT BMN5024CWD3-6 (V97928)) (OPT 102LH9031-6 (V72962)) (OPT BH00303CM6 (V27238)) (OPT SL7108C624 (V11815)) (OPT BH00303CM6 (V27238)) (OPT BMN5024CWD36 (V97928)) (OPT CR60306 (V62554)) (OPT H51560 (V15653)) (OPT SL7108C6 (V11815)) (OPT VCU0005D (V06710)) (OPT 102LH90316 (V72962)) (OPT 67832CD6 (V56878)) (OPT BH003026CD (V27238)) (OPT BMNN10HR6CD (V97928)) (OPT CR59066CD (V62554)) (OPT H966CD (V15653)) (OPT RMLH22 (V72962)) (OPT VAL280096CD (V06710)) (OPT 678326CD (V56878)) (OPT BMN10HRCWD3-6 (V97928))	N-Z	2

# 57-54-33

 ILLUSTRATED PARTS LIST  
 01.1 Page 1080F  
 Sep 01/95


**BOEING**  
 COMPONENT  
 MAINTENANCE MANUAL

FIG. & ITEM	PART NO.	AIRLINE PART NUMBER	NOMENCLATURE 1234567	EFF CODE	QTY PER ASSY
R 02-425	BACB30US7K21		..BOLT- (V06725) (SPEC BACB30US7K21) (OPT BACB30US7K21 (V08524)) (OPT BACB30US7K21 (V50945)) (OPT BACB30US7K21 (V27624)) (OPT BACB30US7K21 (V56878)) (OPT BACB30US7K21 (V06710)) (OPT BACB30US7K21 (V92215))	N-Z	6
R 430	BACW10BP7C		..WASHER- (V10630) (SPEC BACW10BP7C)	N-Z	6
R 435	BACW10BP7P		..WASHER- (V10630) (SPEC BACW10BP7P)	N-Z	6
R 440	BACS40R020B100F		..SHIM	N-Z	1

57-54-33

 ILLUSTRATED PARTS LIST  
 01.1 Page 1080G  
 Sep 01/95

FIG. & ITEM	PART NO.	AIRLINE PART NUMBER	NOMENCLATURE 1234567	EFF CODE	QTY PER ASSY
R 02-445	H51560-7		..NUT- (V15653) (SPEC BACN10HR7CD) (OPT 67832CD720 (V56878)) (OPT 102LH9031-7 (V72962)) (OPT BH00303CM7 (V27238)) (OPT BMN5024CWD37 (V97928)) (OPT CR60307 (V62554)) (OPT SL7108C7 (V11815)) (OPT SL7108C7 (V11815)) (OPT VCU0005D7 (V06710)) (OPT 102LH90317 (V72962)) (OPT 67832CD7 (V56878)) -----*-----	N-Z	6
R 450	BACB28W7F032		...BUSHING	N-Z	4
R 455	BACB28U10F032		...BUSHING	N-Z	2
R 457	BACB28U6F032		...BUSHING	N-Z	2
R 460	112T1045-9		...BONDED ASSY	N-Z	1
R 465	112T1220-2		....STRAP	N-Z	2

**57-54-33**

 ILLUSTRATED PARTS LIST  
 01.1 Page 1080H  
 Sep 01/95


**BOEING**  
 COMPONENT  
 MAINTENANCE MANUAL

FIG. & ITEM	PART NO.	AIRLINE PART NUMBER	NOMENCLATURE 1234567	EFF CODE	QTY PER ASSY
R 02-470	BACB28U6B048		..BUSHING	N-Z	4
R 475	BACB28U10B048		..BUSHING	N-Z	4
R 480	BACB28U7B080		..BUSHING	N-Z	8
R -485	BACS40R033D035F		..SHIM- (ITEM 490A PLUS ITEM 485 OPT TO ITEM 490) (ITEM 495A PLUS ITEM 485 OPT TO ITEM 495)	N-Z	1
R 490	112T1711-19		..BONDED ASSY-INBD SPRT (ITEM 490A PLUS ITEM 485 OPT TO ITEM 490)	N-Q, U-W	1
R -490A	112T1711-13		..BONDED ASSY-INBD SPRT (ITEM 490A PLUS ITEM 485 OPT TO ITEM 490)	N-Q, U-W	1
R -495	112T1711-20		..BONDED ASSY-INBD SPRT (ITEM 495A PLUS ITEM 485 OPT TO ITEM 495)	R-T, X-Z	1
R -495A	112T1711-14		..BONDED ASSY-INBD SPRT (ITEM 495A PLUS ITEM 485 OPT TO ITEM 495)	R-T, X-Z	1
R 500	112T1038-1		...BUSHING	N-Z	2
R 505	BACR15FT8AD		...RIVET- (SIZE DETERMINE ON INST)	N-Z	2
R 510	287T0020-25		...BRACKET ASSY	N-Z	1
R 515	BACR15BA3AD		....RIVET- (SIZE DETERMINE ON INST)	N-Z	4
R 520	BRM100A3		....NUTPLATE- (V52828) (SPEC BACN10JP3B) (OPT MK2000-3BAC (V15653)) (OPT NS103198-02 (V80539)) (OPT RMA9207-3 (V72962)) (OPT T8077S1032 (V11815)) (OPT VN201A1-02 (V92215)) (OPT ITEMS 520A, 520B)	N-Z	2

57-54-33

 ILLUSTRATED PARTS LIST  
 01.1 Page 1080I  
 Sep 01/95

FIG. & ITEM	PART NO.	AIRLINE PART NUMBER	NOMENCLATURE 1234567	EFF CODE	QTY PER ASSY
R 02- -520A	BR1000A3		....NUTPLATE- (V52828) (SPEC BACN10KB3) (OPT K2000-3 (V15653)) (OPT RMA9207-3 (V72962)) (OPT T8109S1032 (V11815)) (OPT VN101A1-02 (V92215)) (OPT K2000-3 (V15653)) (OPT ITEMS 520, 520B)	N-Z	2
R -520B	BRM200A3		....NUTPLATE- (V52828) (SPEC BACN10JP3A) (OPT MK1000-3BAC (V15653)) (OPT NS103197-02 (V80539)) (OPT RMA9201M3 (V72962)) (OPT T8076S1032 (V11815)) (OPT VN202A1-02 (V92215)) (OPT ITEMS 520, 520A)	N-Z	2
R 525	287T0020-26		....ANGLE	N-Z	1
R 530	112T1711-21		...MACHINED ASSY- (USED ON ITEM 490)	N-Q, U-W	1
R -530A	112T1711-15		...MACHINED ASSY- (USED ON ITEM 490A)	N-Q, U-W	1

# 57-54-33

 ILLUSTRATED PARTS LIST  
 01.1 Page 1080J  
 Sep 01/95


**BOEING**  
 COMPONENT  
 MAINTENANCE MANUAL

FIG. & ITEM	PART NO.	AIRLINE PART NUMBER	NOMENCLATURE 1234567	EFF CODE	QTY PER ASSY
R 02-535	112T1711-22		...MACHINED ASSY- (USED ON ITEM 495)	R-T, X-Z	1
R -535A	112T1711-16		...MACHINED ASSY- (USED ON ITEM 495A)	R-T, X-Z	1
R 540	112T1711-23		....BONDED ASSY- (USED ON ITEM 530)	N-Q, U-W	1
R -540A	112T1711-17		....BONDED ASSY- (USED ON ITEM 530A)	N-Q, U-W	1
R -545	112T1711-24		....BONDED ASSY- (USED ON ITEM 535)	R-T, X-Z	1
R -545A	112T1711-18		....BONDED ASSY- (USED ON ITEM 535A)	R-T, X-Z	1
R 550	HL12VAZ8-9		.....BOLT- (V56878) (SPEC BACB30NX8K9) (OPT HL12VAZ8-9 (V73197)) (OPT HL12VAZ8-9 (V92215)) (OPT HL12VAZ8-9 (V97928)) (OPT L802-8K9 (V06725)) (OPT HL12VAZ8-9 (V08524))	N-Z	12
R 555	AN960-416L		.....WASHER	N-Z	12
R 560	HL1187-8		.....COLLAR- (V73197) (SPEC BACC30X8) (OPT HL87-8 (V73197)) (OPT HL87-8 (V92215)) (OPT HL1187-8 (V56878)) (OPT HL1187-8 (V92215)) (OPT HL87-8 (V56878))	N-Z	12

57-54-33

 ILLUSTRATED PARTS LIST  
 01.1 Page 1080K  
 Sep 01/95

FIG. & ITEM	PART NO.	AIRLINE PART NUMBER	NOMENCLATURE 1234567	EFF CODE	QTY PER ASSY
R 02-565	112T1013-9		.....FITTING- (USED ON ITEM 540)	N-Q, U-W	1
R -565A	112T1013-7		.....FITTING- (USED ON ITEM 540A)	N-Q, U-W	1
R -570	112T1013-10		.....FITTING- (USED ON ITEM 545)	R-T, X-Z	1
R -570A	112T1013-8		.....FITTING- (USED ON ITEM 545A)	R-T, X-Z	1
R 575	112T1019-9		.....FITTING- (USED ON ITEM 540)	N-Q, U-W	1
R -575A	112T1019-7		.....FITTING- (USED ON ITEM 540A)	N-Q, U-W	1
R -580	112T1019-10		.....FITTING- (USED ON ITEM 545)	R-T, X-Z	1
R -580A	112T1019-8		.....FITTING- (USED ON ITEM 545A)	R-T, X-Z	1
R 585	112T1011-13		..BRACE ASSY-SIDE	N-Q, U-W	1
R -590	112T1011-14		..BRACE ASSY-SIDE	R-T, X-Z	1
R 595	HL10VAZ12-12		ATTACHING PARTS ..BOLT- (V60516) (SPEC BACB30MY12K12) (OPT HL10VAZ12-12 (VOPTK6))	N-Z	6
R 600	AN960C616L		..WASHER	N-Z	6
R 605	H10-6BAC		..NUT- (V15653) (SPEC BACN10JC6) (OPT RMLH9075-6 (V72962)) (OPT 96-064 (V80539)) (OPT BRH10A6 (V52828)) -----*	N-Z	6

57-54-33

 ILLUSTRATED PARTS LIST  
 01.1 Page 1080L  
 Sep 01/95

**BOEING**  
 COMPONENT  
 MAINTENANCE MANUAL

FIG. & ITEM	PART NO.	AIRLINE PART NUMBER	NOMENCLATURE 1234567	EFF CODE	QTY PER ASSY
R 02-610	BACB28AA12B105		...BUSHING	N-Z	1
R 615	BACB28W14C100		...BUSHING	N-Z	1
R 620	112T1011-15		...MACHINED ASSY	N-Q, U-W	1
R -625	112T1011-16		...MACHINED ASSY	R-T, X-Z	1
R 630	112T1011-17		....SEALED ASSY-FAY	N-Q, U-W	1
R -635	112T1011-18		....SEALED ASSY-FAY	R-T, X-Z	1
R 640	HL12VAZ8-15		.....BOLT- (V56878) (SPEC BACB30NX8K15) (OPT HL12VAZ8-15 (V73197)) (OPT HL12VAZ8-15 (V92215)) (OPT HL12VAZ8-15 (V97928)) (OPT L802-8K15 (V06725)) (OPT HL12-15 (V06725))	N-Z	3
R 645	AN960-416L		.....WASHER	N-Z	3
R 650	HL1187-8		.....COLLAR- (V73197) (SPEC BACC30X8) (OPT HL87-8 (V73197)) (OPT HL87-8 (V92215)) (OPT HL1187-8 (V56878)) (OPT HL1187-8 (V92215)) (OPT HL87-8 (V56878))	N-Z	3

**57-54-33**

ILLUSTRATED PARTS LIST  
 01.1 Page 1080M  
 Sep 01/95



FIG. & ITEM	PART NO.	AIRLINE PART NUMBER	NOMENCLATURE 1234567	EFF CODE	QTY PER ASSY
R 02-655	112T1221-1		.....FITTING	N-Z	1
R 660	112T1221-9		.....FITTING	N-Q, U-W	1
R -665	112T1221-10		.....FITTING	R-T, X-Z	1
R 670	112T1222-9		.....FITTING	N-Q, U-W	1
R -675	112T1222-10		.....FITTING	R-T, X-Z	1
R 680	112T1710-19		..BONDED ASSY-OUTBD SPRT	N-Q, U-W	1
R -685	112T1710-20		..BONDED ASSY-OUTBD SPRT	R-T, X-Z	1
R 690	BACR15FT6AD		...RIVET- (SIZE DETERMINE ON INST)	N-Z	6
R 695	287T1026-1		...BRACKET-WIRE SPRT	N-Z	1
R 700	112T1710-15		...MACHINED ASSY	N-Q, U-W	1
R -705	112T1710-16		...MACHINED ASSY	R-T, X-Z	1
R 710	112T1710-17		....BOND ASSY	N-Q, U-W	1
R -715	112T1710-18		....BOND ASSY	R-T, X-Z	1
R 720	112T1038-1		.....BUSHING	N-Z	2
R 725	HL12VAZ8-9		.....BOLT- (V56878) (SPEC BACB30NX8K9) (OPT HL12VAZ8-9 (V73197)) (OPT HL12VAZ8-9 (V92215)) (OPT HL12VAZ8-9 (V97928)) (OPT L802-8K9 (V06725)) (OPT HL12VAZ8-9 (V08524))	N-Z	4

# 57-54-33

 ILLUSTRATED PARTS LIST  
 01.1 Page 1080N  
 Sep 01/95


**BOEING**  
 COMPONENT  
 MAINTENANCE MANUAL

FIG. & ITEM	PART NO.	AIRLINE PART NUMBER	NOMENCLATURE 1234567	EFF CODE	QTY PER ASSY
R 02-730	HL12VAZ8-17		.....BOLT- (V56878) (SPEC BACB30NX8K17) (OPT HL12VAZ8-17 (V73197)) (OPT HL12VAZ8-17 (V92215)) (OPT HL12VAZ8-17 (V97928)) (OPT L802-8K17 (V06725)) (OPT HL12-17 (V06725))	N-Z	1
R 735	AN960-416L		.....WASHER	N-Z	5
R 740	HL1187-8		.....COLLAR- (V73197) (SPEC BACC30X8) (OPT HL87-8 (V73197)) (OPT HL87-8 (V92215)) (OPT HL1187-8 (V56878)) (OPT HL1187-8 (V92215)) (OPT HL87-8 (V56878))	N-Z	5
R 745	112T1012-7		.....FITTING	N-Q, U-W	1
R -750	112T1012-8		.....FITTING	R-T, X-Z	1
R 755	112T1020-7		.....FITTING	N-Q, U-W	1

57-54-33

 ILLUSTRATED PARTS LIST  
 01.1 Page 10800  
 Sep 01/95

FIG. & ITEM	PART NO.	AIRLINE PART NUMBER	NOMENCLATURE 1234567	EFF CODE	QTY PER ASSY
R 02- -760	112T1020-8		.....FITTING	R-T, X-Z	1
R 765	112T1717-4		..PLATE-BRG	N-Z	1
R 770	112T1717-3		..PLATE-BRG	N-Z	1
R 775	112T1018-1		..HOUSING ASSY	N-Z	1
R 780	MS15720-1		...NIPPLE-LUBE	N-Z	2
R 785	112T1039-1		...BUSHING	N-Z	4
R 790	112T1017-1		...FITTING- (OPT ITEM 790A)	N-Z	1
R -790A	112T1017-3		...FITTING- (OPT ITEM 790)	N-Z	1

**57-54-33**

 ILLUSTRATED PARTS LIST  
 01.1 Page 1080P  
 Sep 01/95